



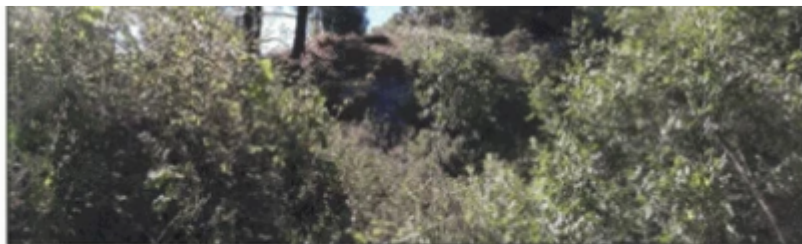
Residential land 1700 m²

Limassol, Pano-Platres-4820 , Cyprus

Offered at: € 245,000

Estate ID: 19355

Ref: ba3787601





Total plot's-land's area: **1700 m²**



Coverage: **0 %**



Available from: **2025-10-30**



Offered at: **245,000**



Type: **Residential**

For Sale: Residential Plot in Pano Platres, Limassol? Limassol, Pano Platres (Postal Code 4820)? Property Details:Plot Size: 1,700 m²Building Density: 30%Building Coverage: 20%Maximum Floors: 2Maximum Height: 8.3 metersRoad Frontage: Approx. 50 meters? Key Features:Location: Panoramic residential plot in Pano Platres, offering breathtaking views of the surrounding landscapeZoning: Falls within the H5 residential planning zoneAccessibility: Located less than 500 meters from the center of Pano Platres, with easy access to the public road along the southwest boundaryIdeal for: Residential development, with the potential to build a house or a small complexEnvironment: Sloping surface o...

Estate on map:



