

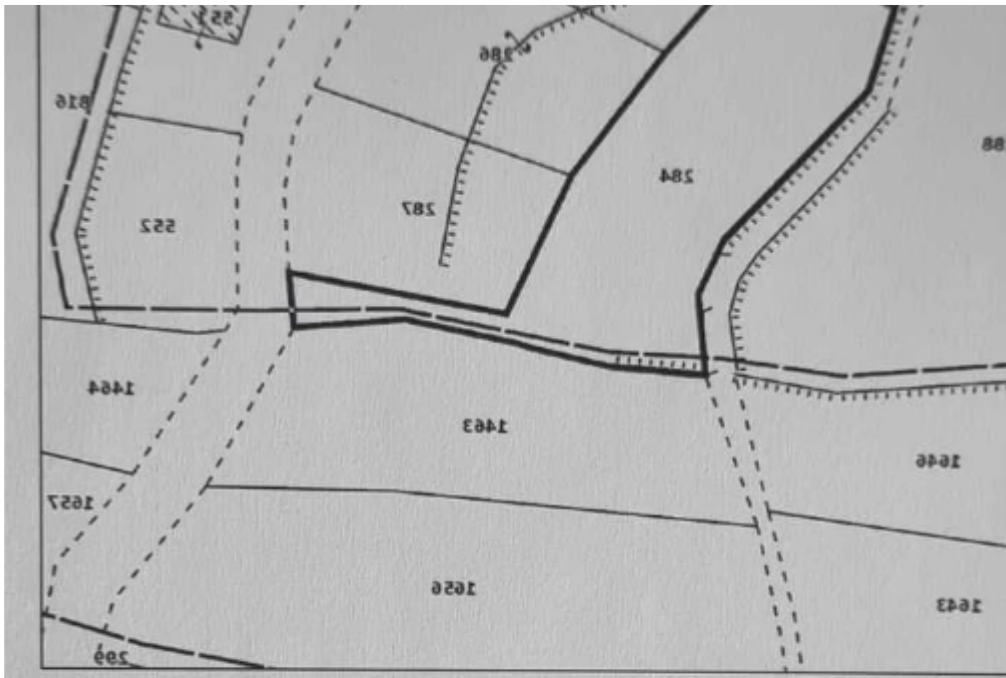
Residential land 1041 m²

Limassol, Omodos-4760 , Cyprus

Offered at: € 190,000

Estate ID: 20531

Ref: ba5682287





Total plot's-land's area: **1041 m²**



Coverage: **35 %**



Density: **60 %**



Available from: **2025-10-30**



Offered at: **190,000**



Type: **Residential**

Plot for Sale in the Picturesque Area of Prodromos, Limassol? Location: Prodromos, Limassol | Troodos VillagesKey Features:? Plot Size: 1,041 m²? Building Density: 60%? Coverage Ratio: 35%? First building permit approved? Possibility to build 3 apartment blocksDescription:This spacious and well-located plot in Prodromos offers excellent investment potential. Prodromos is one of the highest-altitude villages in Cyprus, known for its fresh mountain air, stunning scenery, and cool climate, making it an attractive location for year-round living or tourism projects.The land is ideal for residential development, whether for small residential complexes, holiday apartments, or pri...

Estate on map:



