



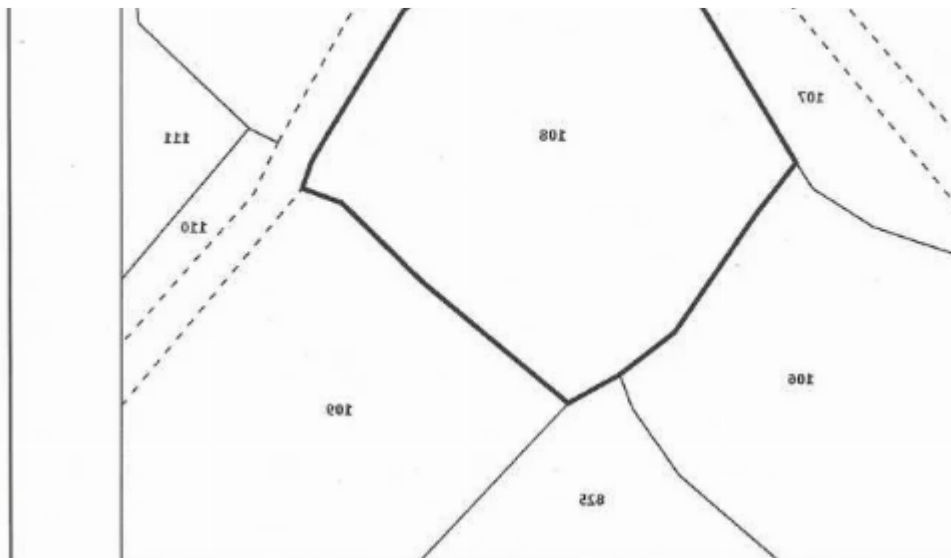
Residential land 3011 m²

Paphos, Stroumpi-8550 , Cyprus

Offered at: € 95,000

Estate ID: 21098

Ref: ba5523129

[illegible]



Total plot's-land's area: **3011 m²**



Coverage: **35 %**



Density: **60 %**



Available from: **2025-10-31**



Offered at: **95,000**



Type: **Residential**

For Sale: Large Residential Plot in Stroumpi Village, Paphos ? Paphos District, Stroumpi | Postal Code: 8550Plot Size: 3,011 m²Building Density: 60%Coverage Ratio: 35%Planning Zone: H3 (Residential)Floors Allowed: Up to 2 floors / Maximum height 8.3 metersAccess: Registered road frontageUtilities: Water and electricity available nearby? Property Overview: This generously sized residential plot is located in the picturesque village of Stroumpi, right in the heart of the Paphos District. Covering 3,011 square meters, the land offers great development potential under the H3 planning zone. With a building density of 60% and coverage of 35%, it's an ideal opportunity for constructing p...

Estate on map:



