



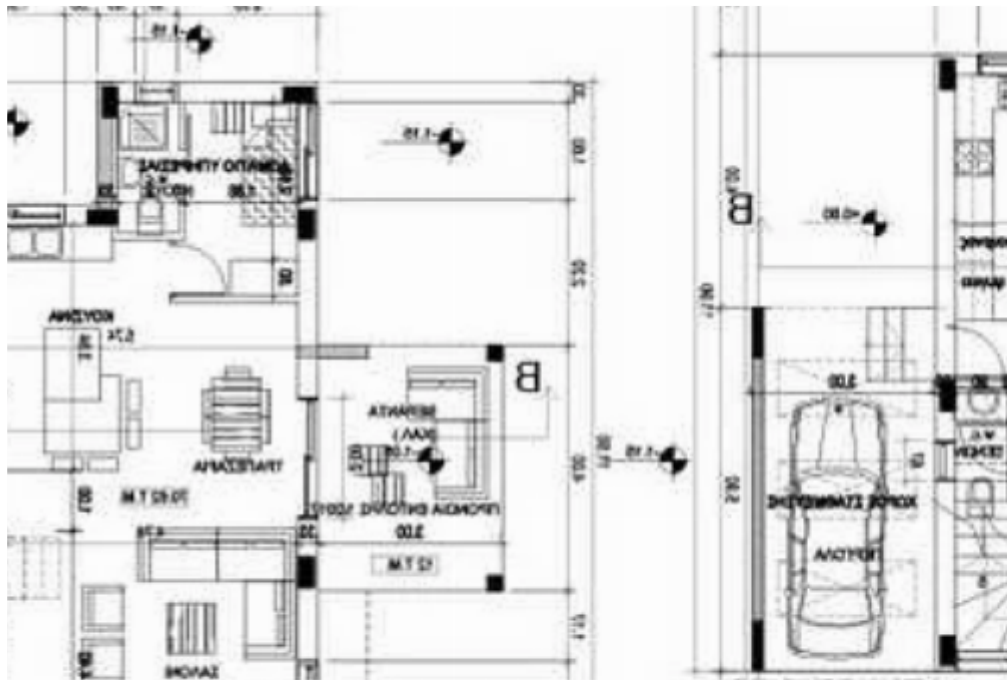
3-bedroom detached house f?r s?le

Limassol, Parekklesia-4520 , Cyprus

Offered at: € 475,000

Estate ID: 24402

Ref: ba6077466





Bathrooms: **3**



Bedrooms: **3**



Parking spaces: **Covered cars**



Available from: **2025-12-05**



Offered at: **475,000**



Type: **PrivateHouse**

""""""Set on an elevated hillside in Parekklesia, this boutique development of nine detached homes offers the ultimate blend of modern design, smart functionality, and breath-taking views. Each residence is carefully crafted to provide privacy, elegance, and a harmonious connection with the Mediterranean landscape. _____ 3-Bedroom Detached Homes — From €470,000 +VAT Delivery: June 2027 Designed for sophisticated living, these homes combine contemporary architecture with advanced energy efficiency and smart home automation. With internal areas ranging from 127 m² to 155 m² and plot sizes between 412 m² and 520 m², each home offers spacious interior...

Estate on map:



