



## 2-bedroom apartment f?r s?le

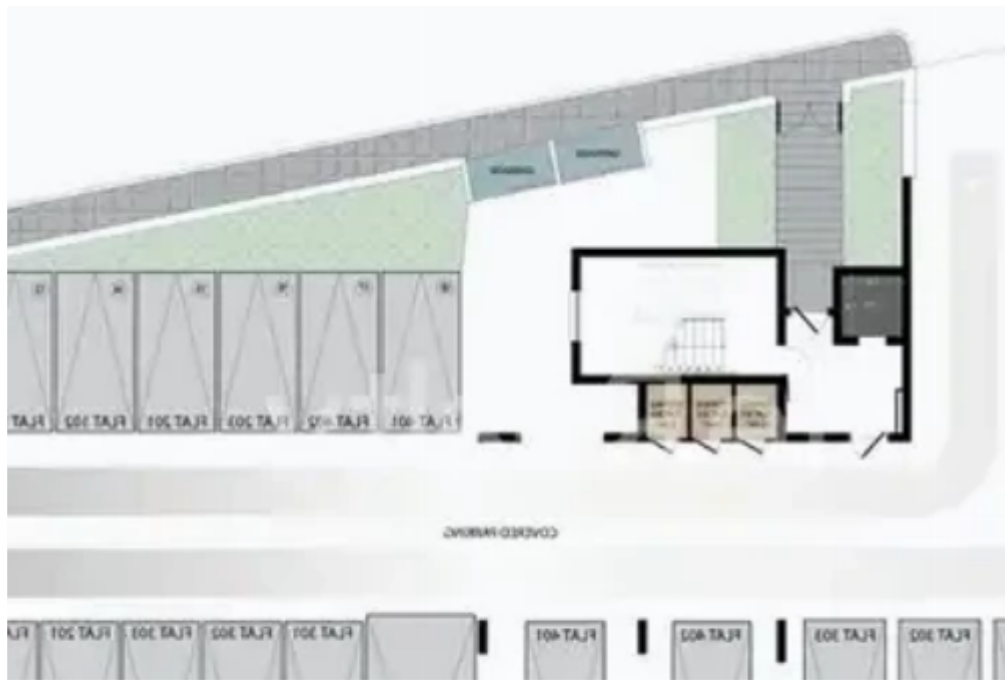
**€460.000**

Limassol, Super-Home-Center-Timou-Prodromou-Mesa-Geitonia-4004 , Cyprus

**Offered at:** € 460,000

**Estate ID:** 27120

**Ref:** ba5214494





NET internal area: **87**



Bathrooms: **2**



Bedrooms: **2**



Parking spaces: **Covered cars**



Available from: **2024-04-17**



Offered at: **460,000**



Type: **Apartment**

This four-floor building contains 7 apartments and 1 penthouse, tucked away in a peaceful corner of Limassol yet conveniently proximate to numerous amenities, just a 5-minute drive from the heart of the city. Available is currently this outstanding two bedroom apartment and it is provided fully furnished.

With high-quality finishes, it presents an enticing opportunity for both renters and potential buyers. Situated close to major roads in the Germasogeia area, it's only a short 10 minute drive from the beach and conveniently located near schools, banks, and markets. Discover a plethora of exceptional features upon seizing the opportunity to claim ownership of one of the most breathtaki...



## Estate on map:

