



2-bedroom apartment f?r s?le

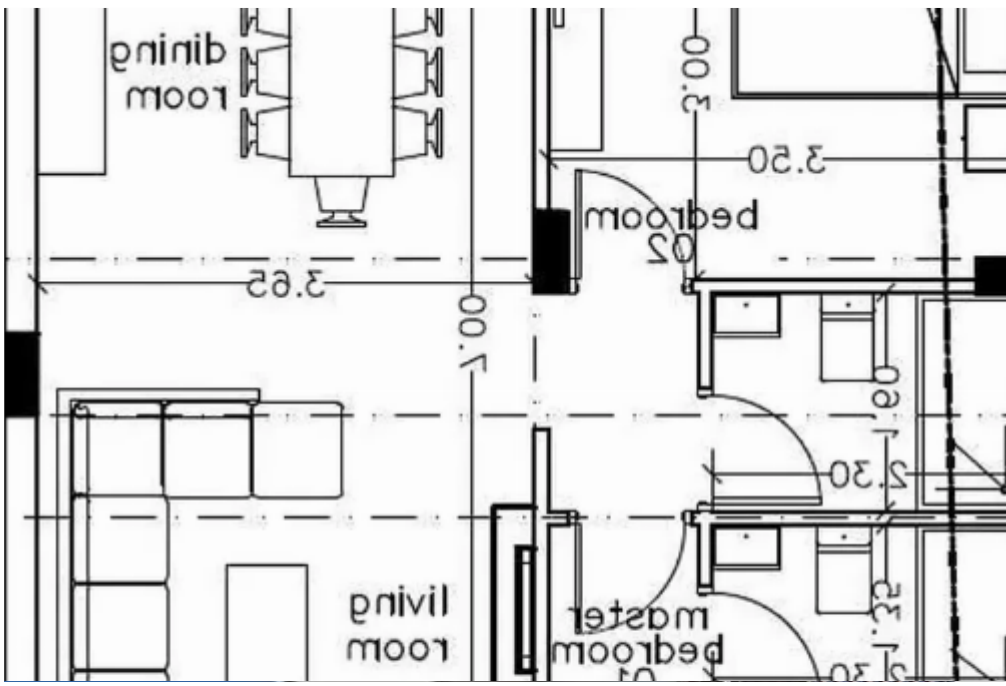
€460.000

Limassol, Super-Home-Center-Timou-Prodromou-Mesa-Geitonia-4004 , Cyprus

Offered at: € 460,000

Estate ID: 27309

Ref: ba5056719





NET internal area: **113**



Bathrooms: **2**



Bedrooms: **2**



Parking spaces: **Covered cars**



Available from: **2024-04-17**



Offered at: **460,000**



Type: **Apartment**

....."Complex of 14 apartments, located in the exclusive Columbia Area of Limassol High specifications, underfloor heating Italian Kitchens, etc. Convenient location, walking distance to supermarket and amenities The specifications included: Underfloor Heating Custom Designed Italian Kitchens & Wardrobes Spanish / Italian Tiling Granite worktops Double glazed patio doors Storeroom & covered parking Central pressurized water system Solar Panel Water Heating Thermal Insulation throughout (extruded polystyrene) Sanitary ware Laufen Mixers & taps Grohe Video phone entry system Covered Secured Parking Pipe in pipe plumping system Security door Communal Swimmi...

Estate on map:

image not found or type unknown



