



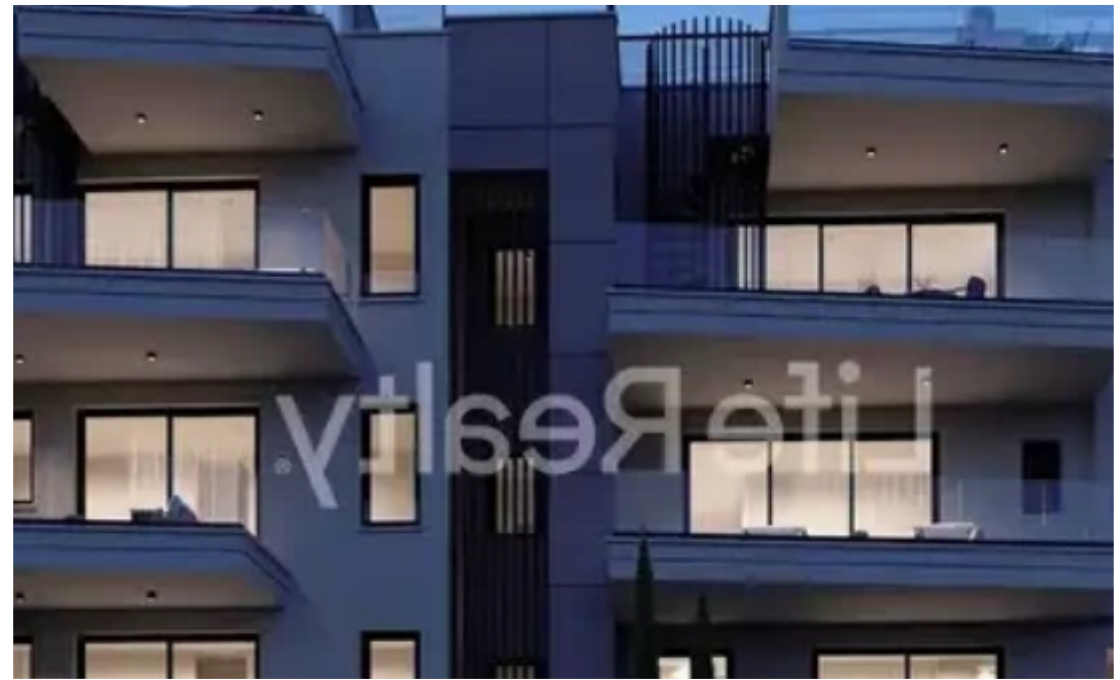
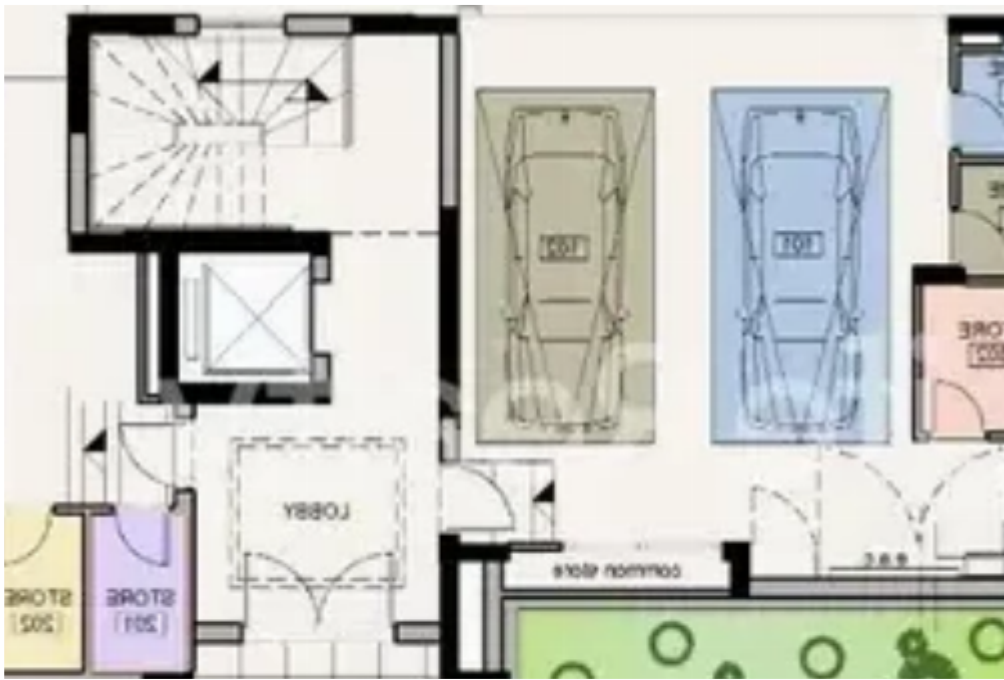
## 2-bedroom apartment f?r s?le

Limassol, Agios-Panteleimon-School-Agia-Phyla-Agia-Fylaxis-3116 ,  
Cyprus

**Offered at:** € 340,000

**Estate ID:** 28132

**Ref:** ba5220094





NET internal area: **81**



Bathrooms: **1**



Bedrooms: **2**



Parking spaces: **Covered cars**



Available from: **2024-04-19**



Offered at: **340,000**



Type: **Apartment**

\*\*\*\*\*This three-floor building, comprising four flats and two penthouses, is nestled in the sought after area of Panthea in Limassol. It boasts top-quality finishes, making it an appealing property for potential buyers. Located within the heart of the city, it's an 10-minute drive from the center of Limassol and only a 2-minute drive from the highway. Here are some key features you can expect from this upscale building: - Certificate of Energy Efficiency A. - Provisions for electric shutters. - Photovoltaic system on the roof. - Gated parking. Available: -Apartment 201 -Internal area: 81m2 - Covered verandas: 21m2 -Price: €340.00 +VAT Contact us today, for detailed information....

## Estate on map:

image not found or type unknown





Lita Realty