



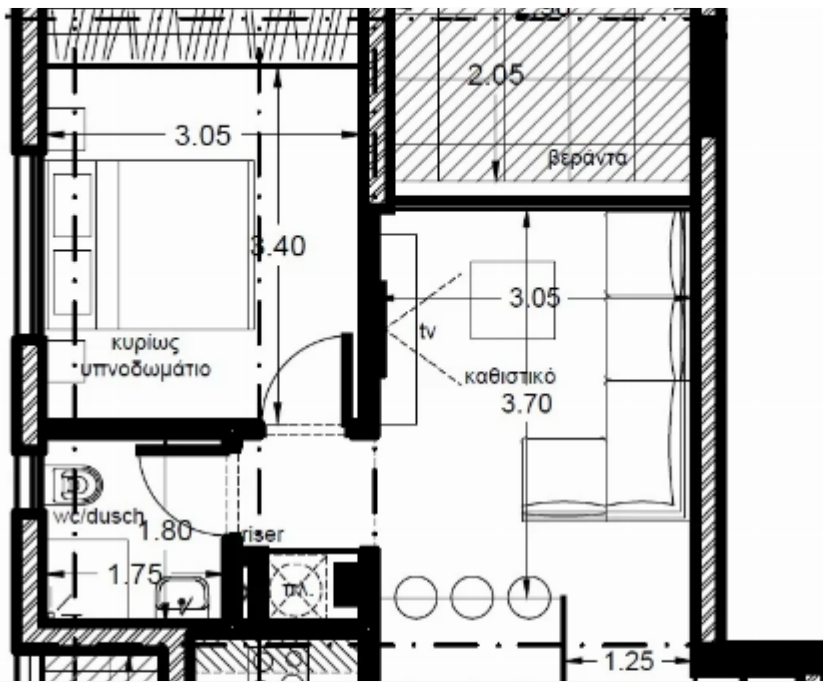
Modern 1-Bedroom Apartment in Limassol's Kapsalos District

Limassol, Spyrou-Kyprianou-Ave-Kapsalos-3083 , Cyprus

Offered at: € 265,000

Estate ID: 28345

Ref: MLS-15989





Bathrooms: **1**



Bedrooms: **1**



Parking spaces: **1 cars**



Available from: **2026-04-10**



Offered at: **265,000**



Type: **Apartment**



Veranda: **9 m²**

Experience contemporary Mediterranean living in this brand-new 2nd-floor residence, nestled within an energy-efficient Category A development scheduled for completion in 2026. Designed with precision and elegance, this apartment offers a perfect blend of comfort and urban convenience.

?Property Highlights:Bedrooms & Bathrooms: ;1 well-proportioned bedroom with 1 modern bathroomSpacious Layout: ;50 sqm net indoor area featuring premium finishesOutdoor Retreat: ;9 sqm covered veranda for seamless indoor-outdoor livingPractical Additions: ;3 sqm private storage + 1 dedicated parking spacePrime Location:Ideally positioned on Spyrou Kyprianou Avenue in Kapsalos (3083), residents enjoy:?...

Estate on map:

image not found or type unknown



