



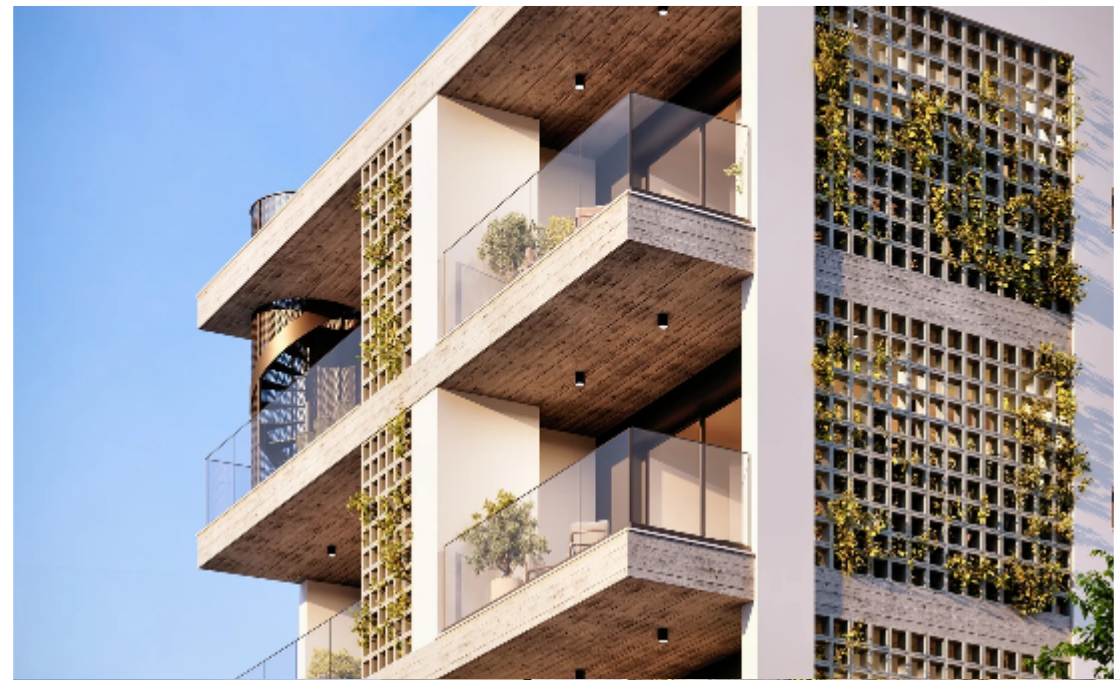
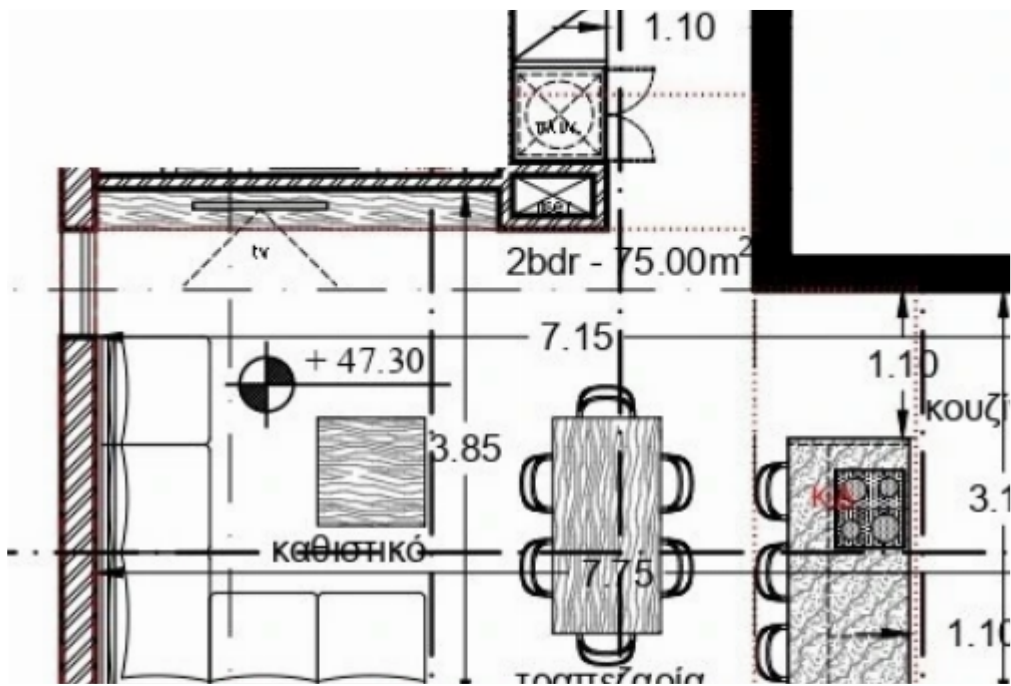
2-bedroom apartment f?r s?le

Limassol, Lyceum-Petros-And-Pavlos-3085 , Cyprus

Offered at: € 490,000

Estate ID: 28407

Ref: MLS-1827





Bathrooms: **2**



Bedrooms: **2**



Parking spaces: **1 cars**



Available from: **2026-04-10**



Offered at: **490,000**



Type: **Apartment**



Veranda: **18 m²**

Embrace Modern Elegance in Limassol's Coveted Lyceum District ;?Positioned in the prestigious ;Petros and Pavlos ;area, this brand-new residential apartment redefines coastal sophistication. Steps from Limassol's golden beaches and cosmopolitan heart, residents enjoy instant access to seaside promenades ??, gourmet dining, and vibrant cultural hubs – all while immersed in a tranquil, upscale neighborhood.Apartment Features:Bright &; Airy Living: ;75 sqm of meticulously designed interior space with floor-to-ceiling windows, premium finishes, and seamless flow between rooms.Expansive Terrace: ;18 sqm covered veranda – your private oasis for morning coffees or sunset gatherin...

Estate on map:

image not found or type unknown



