

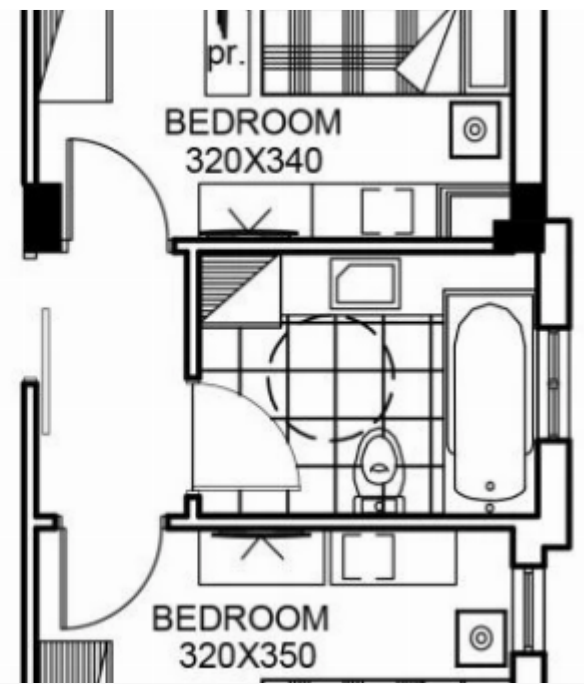
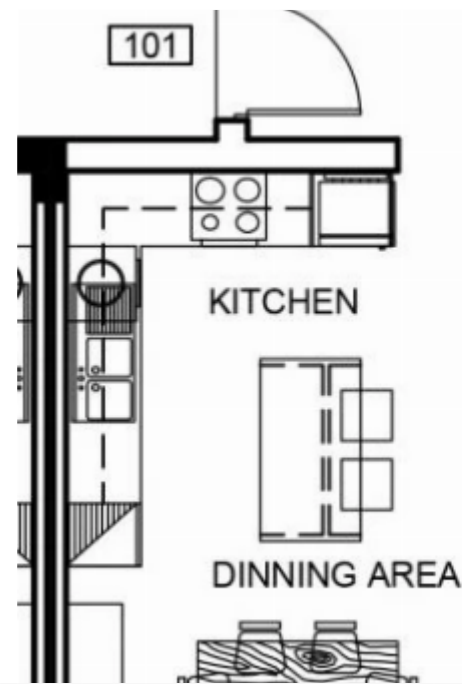
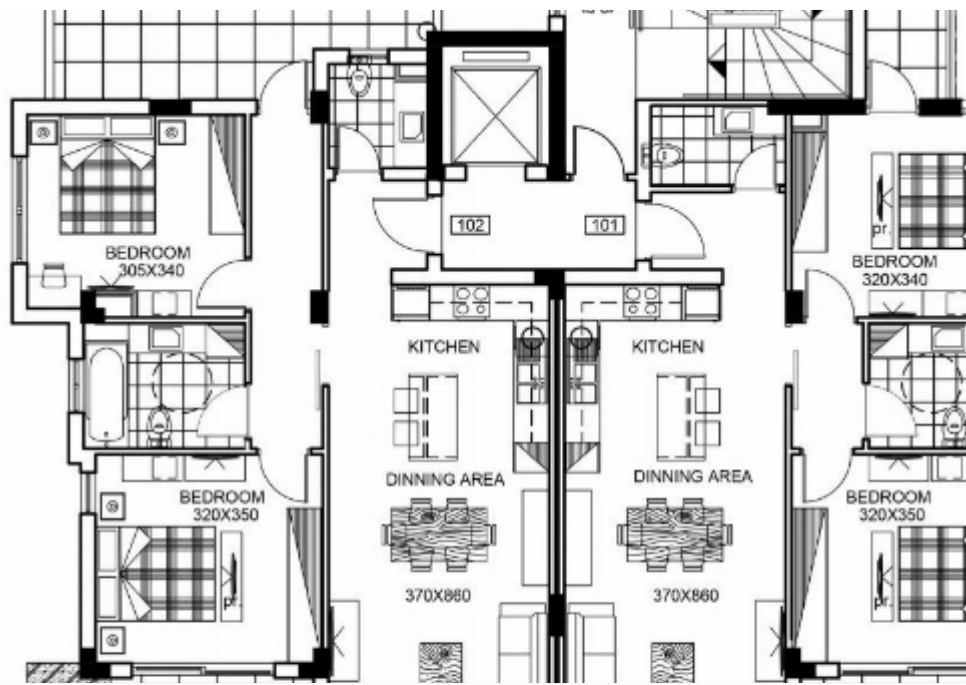
## 2 bedrooms, 83 sq.m.

Limassol, Waterboard-Fragklinou-Rousvelt-St-Agios-Ioannis-3012 ,  
Cyprus

**Offered at:** € 370,000

**Estate ID:** 29383

**Ref:** J3856L1460





Density: **0 %**



Available from: **2024-04-23**



Offered at: **370,000**



Type: **Penthouse**

Located in one of the most developed areas in the center of the city of Limassol, minutes away from Limassol Marina. The Park Horizon Court is ideally situated to enable residents to enjoy the benefits that the busy city life has to offer. While positioned in a quiet residential neighborhood, the Park Horizon Court is yet within very close proximity to all the city's amenities including schools, supermarkets, banks, cafes, restaurants and shopping centers. The four-story project boasts a selection of eight spacious and modern apartment; six two-bedroom apartments and two three-bedroom apartments with an en-suite bathroom. Each of the apartments includes a covered parking spac...

## Estate on map:

image not found or type unknown



