

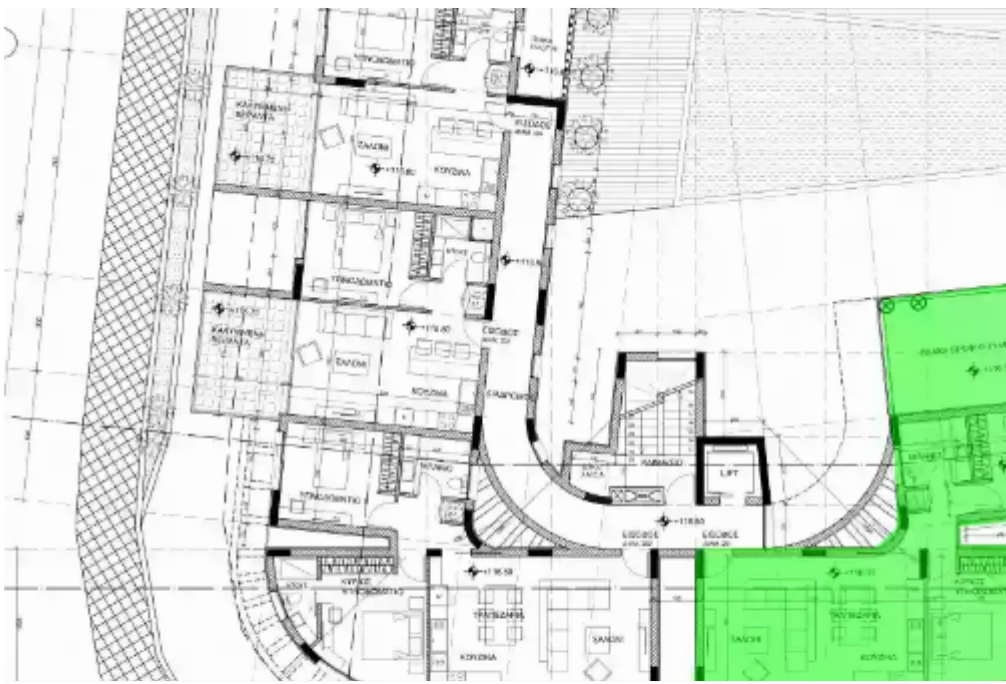
2 bedrooms, 90 sq.m.

Limassol, Panthea-Mesa-Geitonia-4007 , Cyprus

Offered at: € 450,000

Estate ID: 29461

Ref: J3826L1380





NET internal area: **90**



Bathrooms: **2**



Bedrooms: **2**



Parking spaces: **1 cars**



Available from: **2024-04-23**



Offered at: **450,000**



Type: **Apartment**



Veranda: **22 m²**

Introducing Flat 201, an epitome of modern elegance and comfort, nestled on the second floor of this prestigious development. Boasting meticulous design and thoughtful allocation of space, this residence offers a refined living experience in the heart of Limassol. This two-bedroom apartment spans across an internal covered area of 90.13 square meters, seamlessly blending sophistication with functionality. Step onto the balcony, spanning 22.80 square meters, and be captivated by the panoramic views extending across the cityscape, inviting you to indulge in the beauty that Limassol has to offer. The total square meterage of this residence culminates at 137.33, creating a spacious and com...

Estate on map:

