

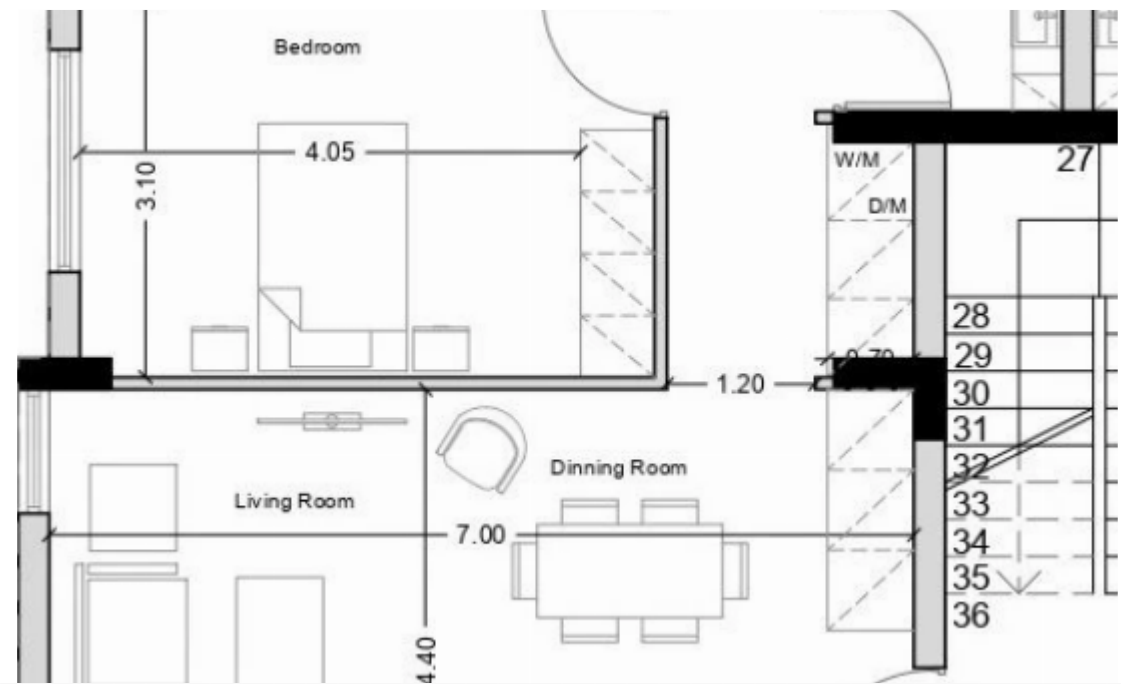
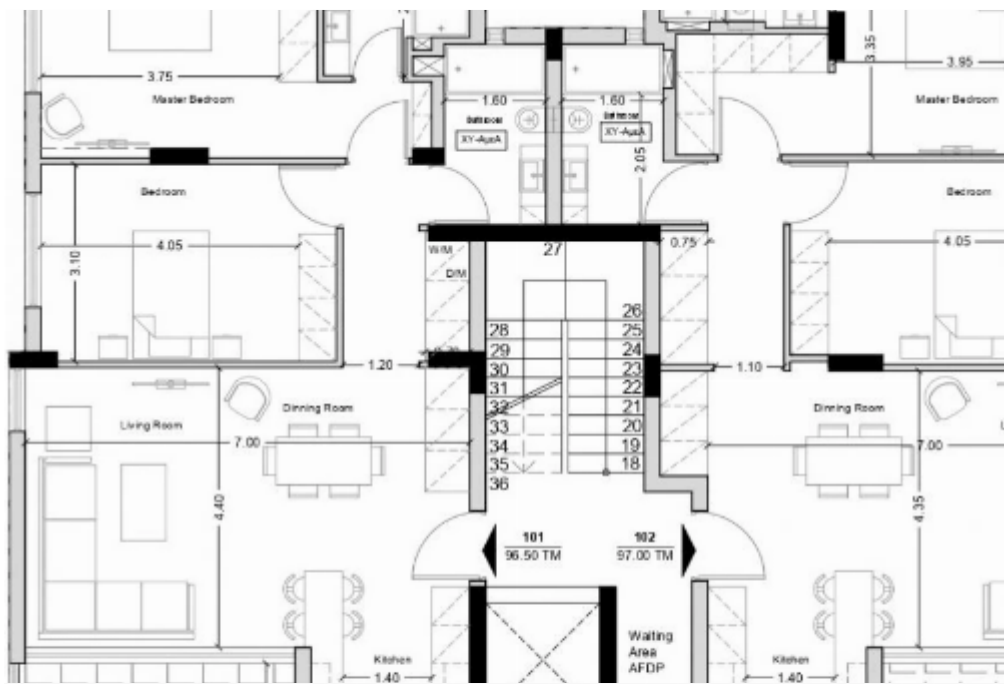
2 bedrooms, 96 sq.m.

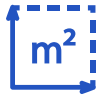
Limassol, Kodobathkia-Mesa-Geitonia-4001 , Cyprus

Offered at: € 440,000

Estate ID: 29500

Ref: J3760L1371





NET internal area: **96**



Bathrooms: **2**



Bedrooms: **2**



Parking spaces: **1 cars**



Available from: **2024-04-23**



Offered at: **440,000**



Type: **Apartment**



Veranda: **25 m²**

Spacious 2-Bedroom Apartment with Storage Room and Parking This inviting 2-bedroom apartment offers a comfortable internal covered area of 96 m², providing ample space for living and relaxation. Additionally, it comes with a convenient storage room measuring 4 m². For added convenience, the apartment includes one designated parking space, ensuring hassle-free parking for residents. Discover the perfect blend of comfort and functionality in this well-appointed property....

Estate on map:

