

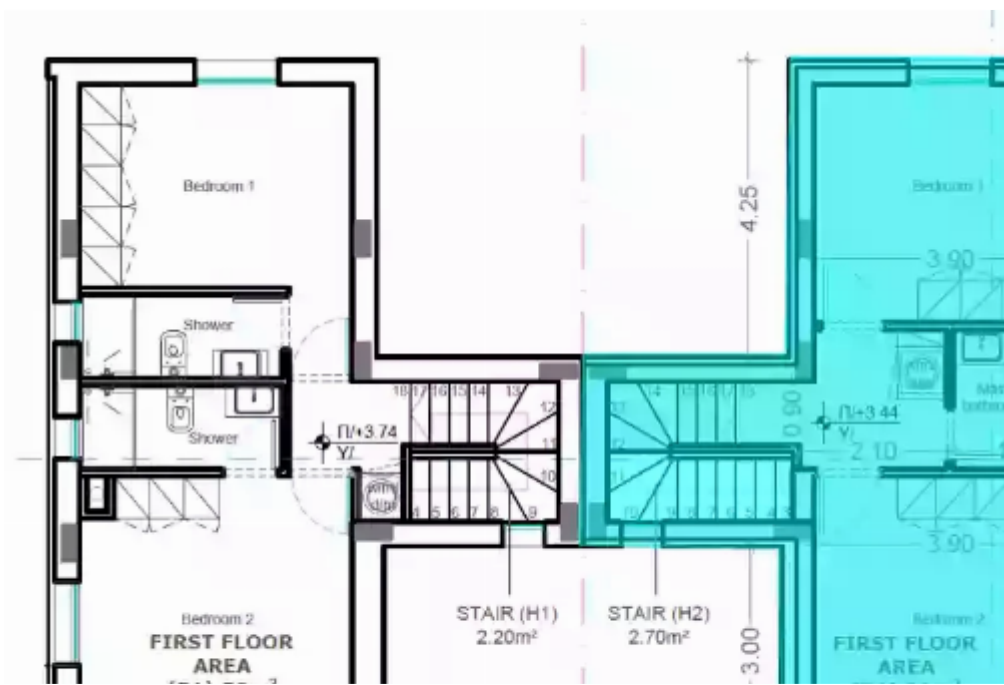
2 bedrooms, 108 sq.m.

Limassol, Trimiklini-4730 , Cyprus

Offered at: € 355,000

Estate ID: 29557

Ref: J3685L1342





NET internal area: **108**



Bathrooms: **2**



Bedrooms: **2**



Parking spaces: **1 cars**



Available from: **2024-04-23**



Offered at: **355,000**



Type: **SemidetachedHouse**

Explore this delightful semidetached house, boasting a generous net internal area of 108 square meters. With two bedrooms and two bathrooms, this brand-new property offers comfortable and modern living with picturesque mountain views. Inside, the house is left unfurnished, providing you with a blank canvas to infuse your unique style and personality. Owned by a company, it features a cozy fireplace that adds warmth and character to the living space. For parking convenience, there is one dedicated uncovered parking space. Step out to the verandas and garden, where you'll find a delightful space for outdoor activities, including a barbecue area, a children's playground, and your very ow...

Estate on map:

image not found or type unknown



