

ντουσιέρα



Πισίνα

Καλυμμένη
Βεράντα

Υπνοδ.
1

W.C.

Υπνοδ.
2

W.C.

Υπνοδ.
3

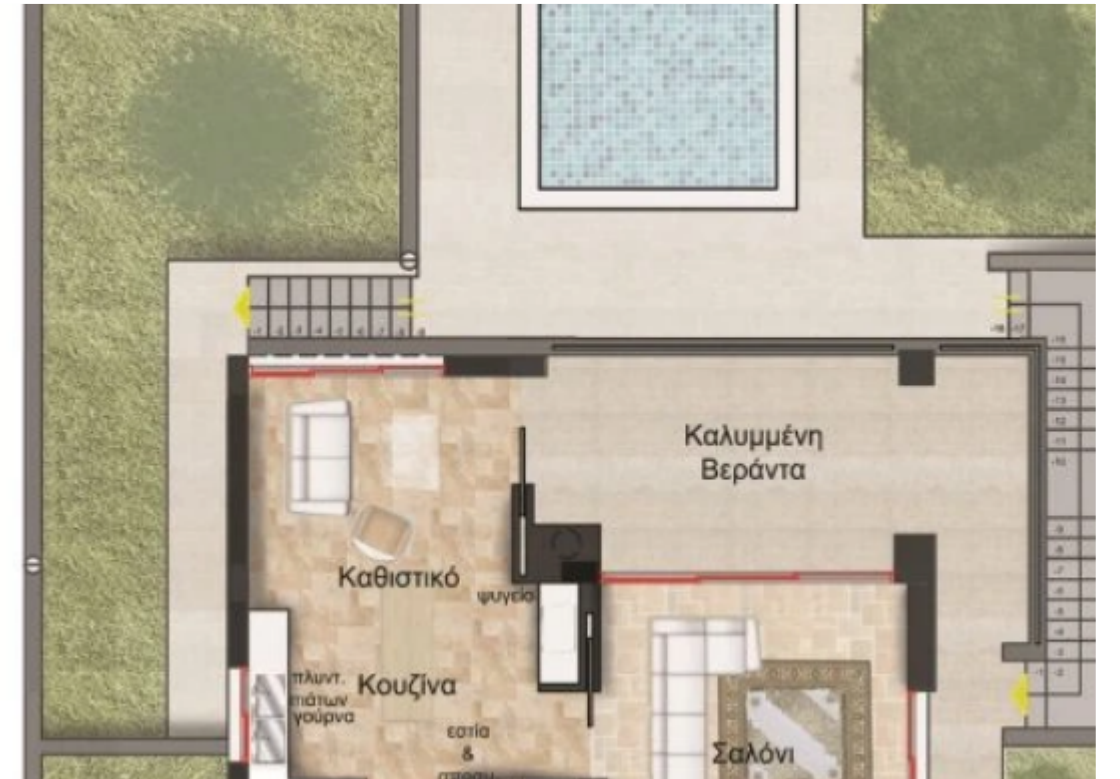
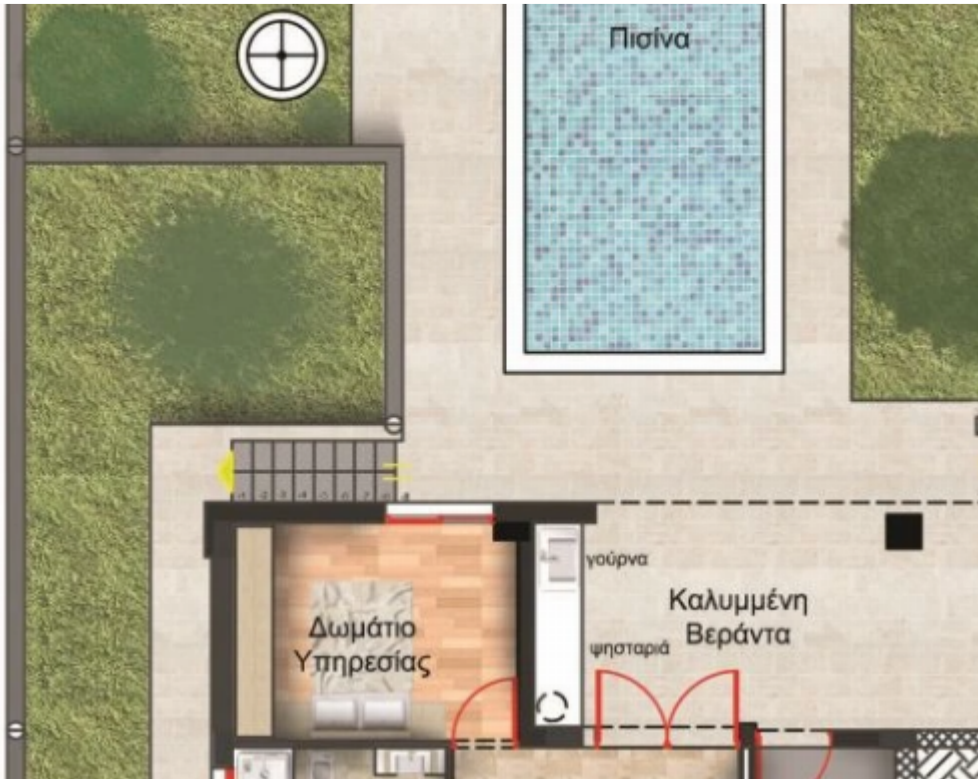
3 bedrooms, 250 sq.m.

Limassol, Parekklesia-4520 , Cyprus

Offered at: € 800,000

Estate ID: 29689

Ref: J3518L1282





NET internal area: **250**



Bathrooms: **3**



Bedrooms: **3**



Parking spaces: **1 cars**



Available from: **2024-04-23**



Offered at: **800,000**



Type: **Villa**



Veranda: **35 m²**

HOUSE 5 PLOT: 554m2 INTERNAL: 250.25 m2 C.PARKING: 34.30 m2 C.VERANDAS: 35 m2 1.. Walls Reinforced concrete with anti-carthquake studies. Insulation material for the prevention of humidity in all the stabs. All the walls will be build with No 1 quality bricks. Internal walls 10 cm width.

External 25cm width 2..Covering the walls All the walls in toilets will be covered with tiles worth 20 euro per square meter and the ceilings will be covered with false ceilings with spotlights. The walls in the kitchen (between the cupboards) will be covered with tiles worth 20 euro 3..Windows and outside doors For the slide-windows aluminium series will be used:mu 3000 thermal plus. For the o...

Estate on map:



