

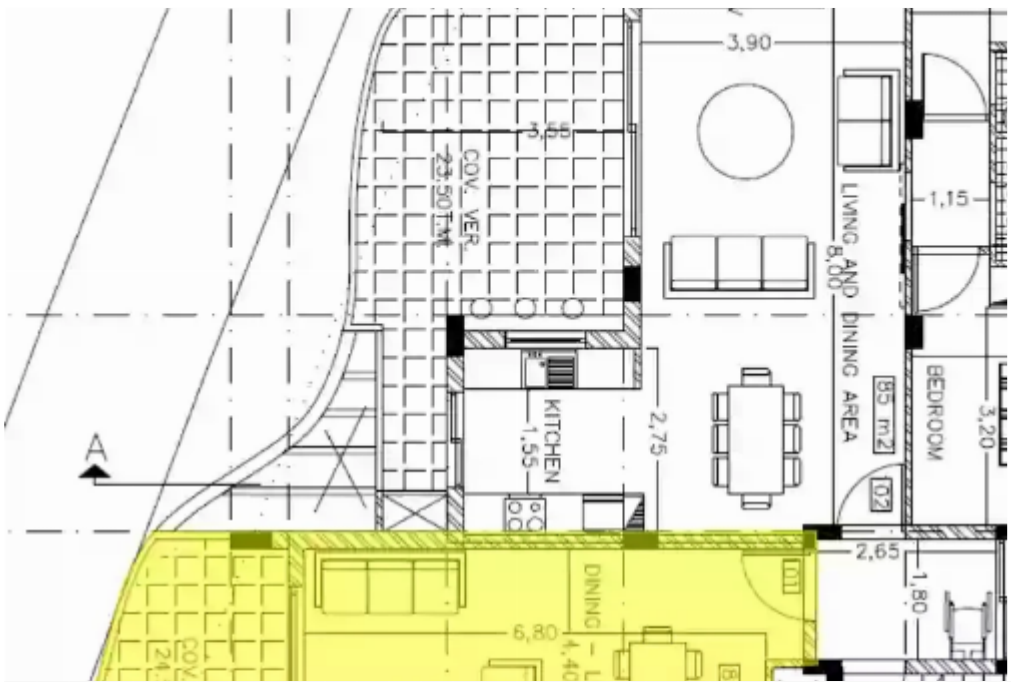
## 2 bedrooms, 85 sq.m.

Limassol, Touristiki-Periochi-Pyrgos-4534 , Cyprus

**Offered at:** € 435,000

**Estate ID:** 29710

**Ref:** J3477L1261





NET internal area: **85**



Bathrooms: **2**



Bedrooms: **2**



Parking spaces: **1 cars**



Available from: **2024-04-23**



Offered at: **435,000**



Type: **Apartment**

Welcome to the epitome of modern living on the first floor of EL CURVE Apartments. This luxurious residence encompasses two spacious bedrooms and two elegantly designed bathrooms, offering a harmonious blend of comfort and style. With an expansive covered area of 85 square meters, this apartment provides ample space for you to create your dream home. Indulge in the finest details of craftsmanship and design as you explore the well-appointed rooms and thoughtfully curated spaces. Elevate your lifestyle at EL CURVE, where every square meter is a testament to sophistication and refinement....

## Estate on map:

image not found or type unknown



