

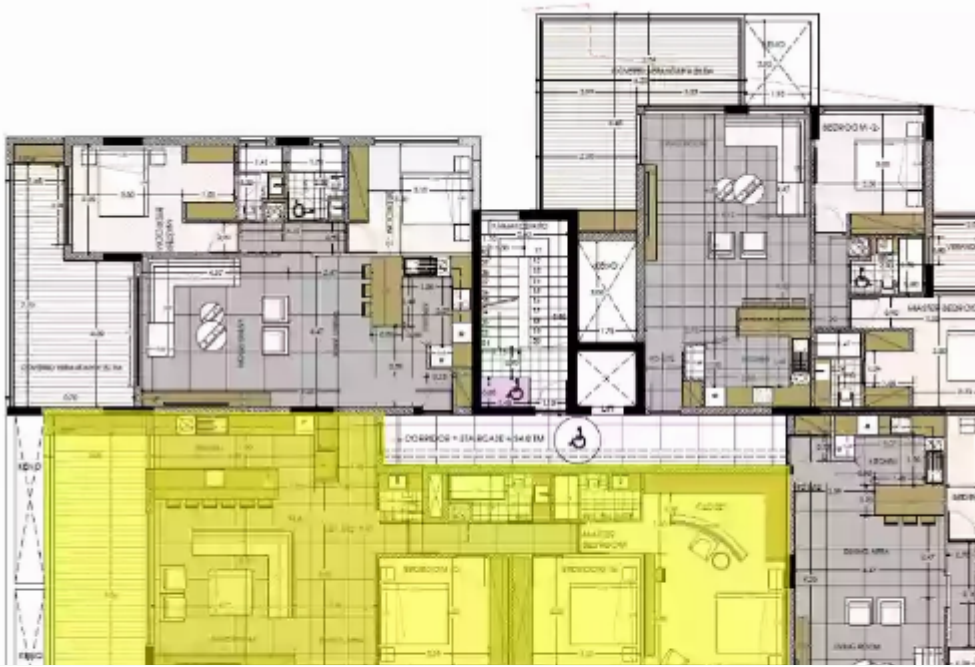
3 bedrooms, 131 sq.m.

Limassol, Panthea-Mesa-Geitonia-4007 , Cyprus

Offered at: € 660,000

Estate ID: 29718

Ref: J3474L1253





NET internal area: **131**



Bathrooms: **2**



Bedrooms: **3**



Parking spaces: **2 cars**



Available from: **2024-04-23**



Offered at: **660,000**



Type: **Apartment**



Veranda: **55 m²**

Welcome to this exquisite apartment that encapsulates the perfect blend of comfort, space, and luxury. Boasting three spacious bedrooms and two modern bathrooms, this residence offers a harmonious balance between privacy and shared living spaces. With a generous covered area of 131 square meters, there's ample room to create the home of your dreams. Step onto the covered veranda, extending 55 square meters, where you can relish in the open air while enjoying the beauty of your surroundings. The veranda seamlessly merges indoor and outdoor living, offering an ideal setting for relaxation and entertaining. Convenience meets functionality with the provision of two dedicated parking spaces...

Estate on map:

