

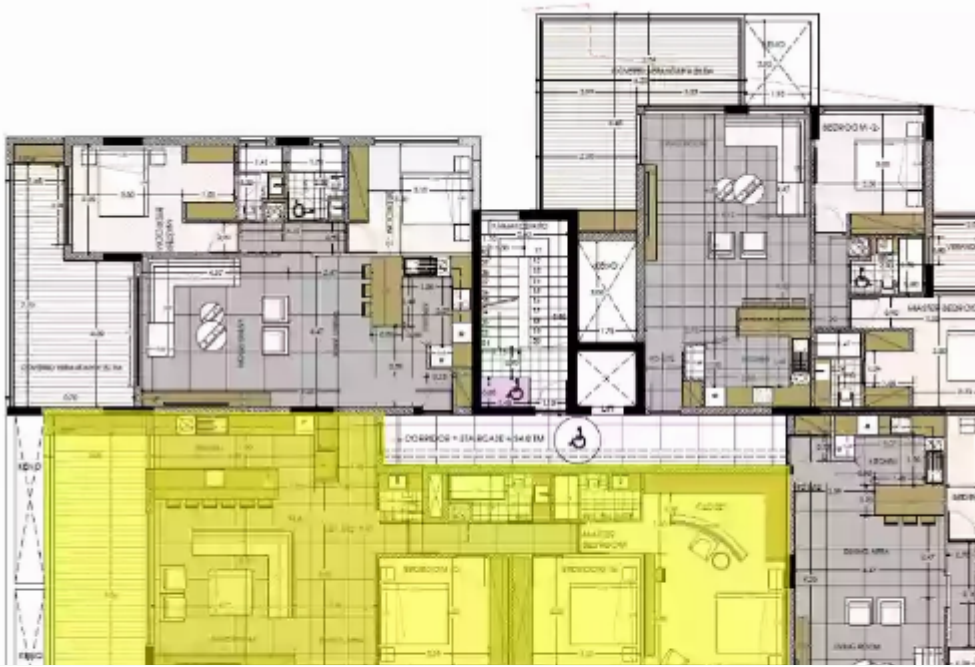
2 bedrooms, 90 sq.m.

Limassol, Panthea-Mesa-Geitonia-4007 , Cyprus

Offered at: € 430,000

Estate ID: 29721

Ref: J3474L1252





NET internal area: **90**



Bathrooms: **2**



Bedrooms: **2**



Parking spaces: **1 cars**



Available from: **2024-04-23**



Offered at: **430,000**



Type: **Apartment**



Veranda: **26 m²**

Introducing a captivating apartment that encapsulates modern living at its finest. With two generously-sized bedrooms and two stylish bathrooms, this residence offers a harmonious blend of comfort and elegance. Spanning across 90 square meters of covered area, the layout provides a spacious canvas for you to create the perfect living environment. Step out onto the inviting covered porch, extending 26 square meters, where you can bask in the fresh air while savoring the beauty of your surroundings. This outdoor extension seamlessly merges with the indoor spaces, providing an ideal setting for relaxation and hosting gatherings. Your convenience is paramount, as evidenced by the provision...

Estate on map:

