

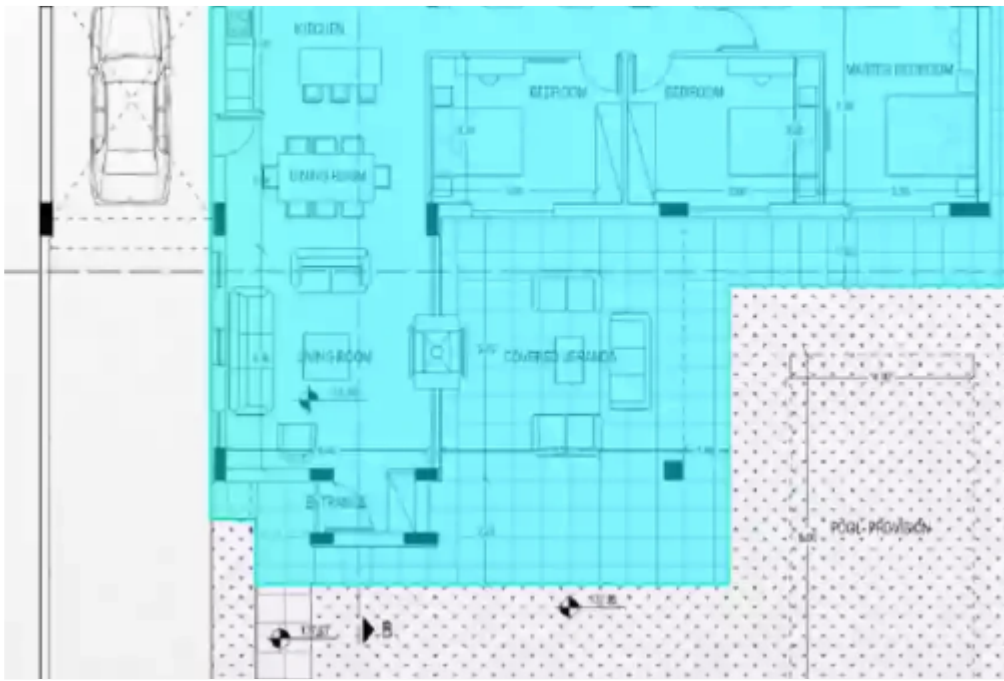
3 bedrooms, 150 sq.m.

Limassol, Souni-4717 , Cyprus

Offered at: € 680,000

Estate ID: 29733

Ref: J3463L1229





NET internal area: **150**



Bathrooms: **2**



Bedrooms: **3**



Parking spaces: **1 cars**



Available from: **2024-04-23**



Offered at: **680,000**



Type: **PrivateHouse**



Veranda: **30 m²**

Explore the epitome of modern living with a LEVEL house boasting 3 bedrooms and an extra room, thoughtfully designed across an internal expanse of 150 sqm. Adorned with a generous covered veranda spanning 30 sqm, this residence invites the outdoors in, offering a seamless blend of comfort and nature. Situated on a spacious plot of 753 sqm, the house presents abundant possibilities for personalized landscaping and outdoor pursuits. Convenience meets style with a dedicated parking space, ensuring effortless access. Elevate your lifestyle further by opting for a private swimming pool, an oasis of leisure just steps away. Discover a harmonious symphony of space, design, and optional luxury, defi...

Estate on map:

image not found or type unknown



