

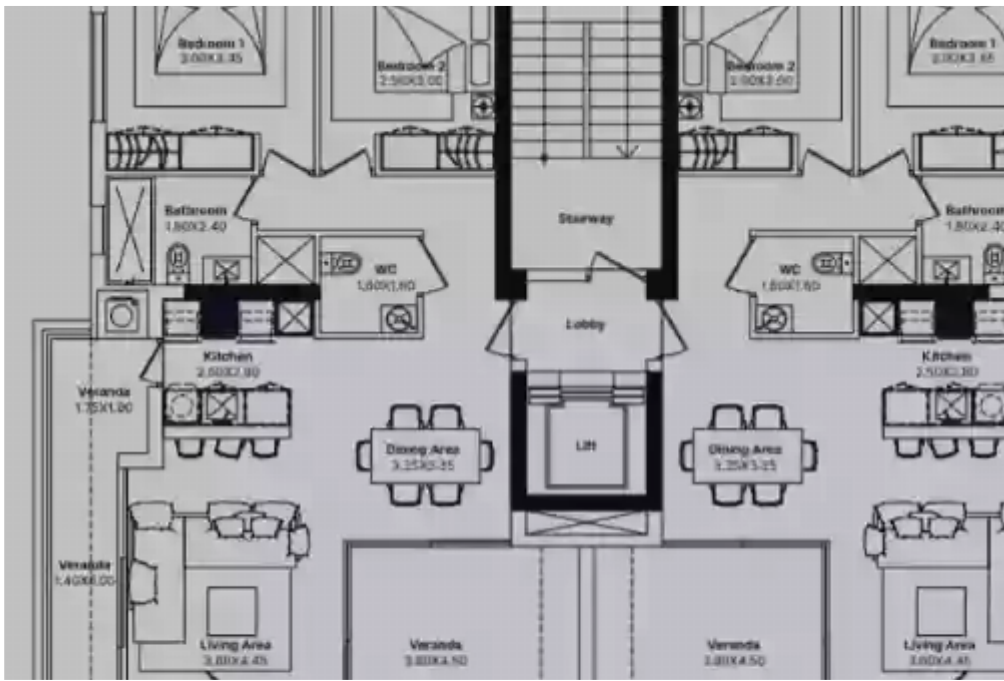
2 bedrooms, 82 sq.m.

Limassol, Primary-School-St-Mary-School-Agia-Zoni-3031 , Cyprus

Offered at: € 480,000

Estate ID: 29736

Ref: J3459L1232





NET internal area: **82**



Bathrooms: **2**



Bedrooms: **2**



Parking spaces: **1 cars**



Available from: **2024-04-23**



Offered at: **480,000**



Type: **Apartment**



Veranda: **34 m²**

Welcome to The Continent: Your Limassol Oasis Discover The Continent, an iconic project designed to fulfill the housing needs of young individuals while presenting an exceptional investment opportunity. Located on Isidorou Street, off Agias Zoni Street, in the heart of Limassol, this project combines exquisite design with unparalleled aesthetics. A Prime Location Strategically positioned, The Continent seamlessly merges a serene neighborhood setup with convenient access to key amenities. It benefits from immediate proximity to the bustling Makarios Avenue, renowned for its prestigious cafes, upscale boutiques, and business office buildings. The large green park and Limas...

Estate on map:

