

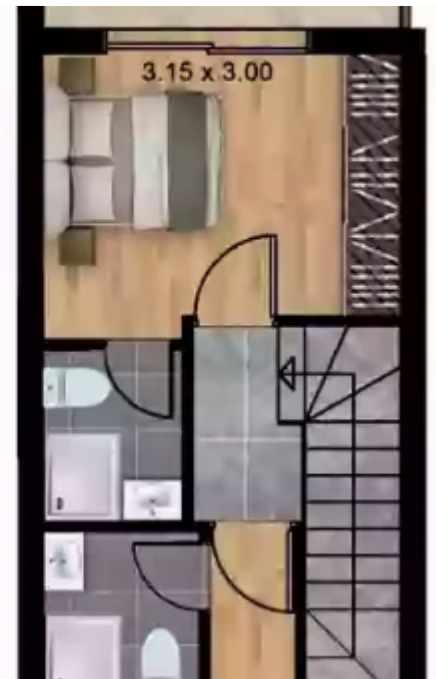
## 2 bedrooms, 76

Limassol, Parekklesia-4520 , Cyprus

**Offered at:** € 314,900

**Estate ID:** 29751

**Ref:** J3442L1206





NET internal area: **76**



Bathrooms: **1**



Bedrooms: **2**



Parking spaces: **1 cars**



Available from: **2024-04-23**



Offered at: **314,900**



Type: **SemidetachedHouse**



Veranda: **8 m²**

Charming 2-Bedroom Semidetached House with Parking Discover this exceptional semidetached house, known as House 41, boasting two spacious bedrooms, nestled in a serene location. With an internal covered area of 69 square meters and an inviting covered veranda spanning 8 square meters, this home offers ample space for relaxation and entertainment. Situated on a generously sized plot measuring 62 square meters, this property provides you with the perfect opportunity to create your dream outdoor oasis. The convenient parking space ensures hassle-free parking for you and your family.

Immerse yourself in the comforts of this delightful semidetached house, ideal for creating lasting memories...

## Estate on map:

