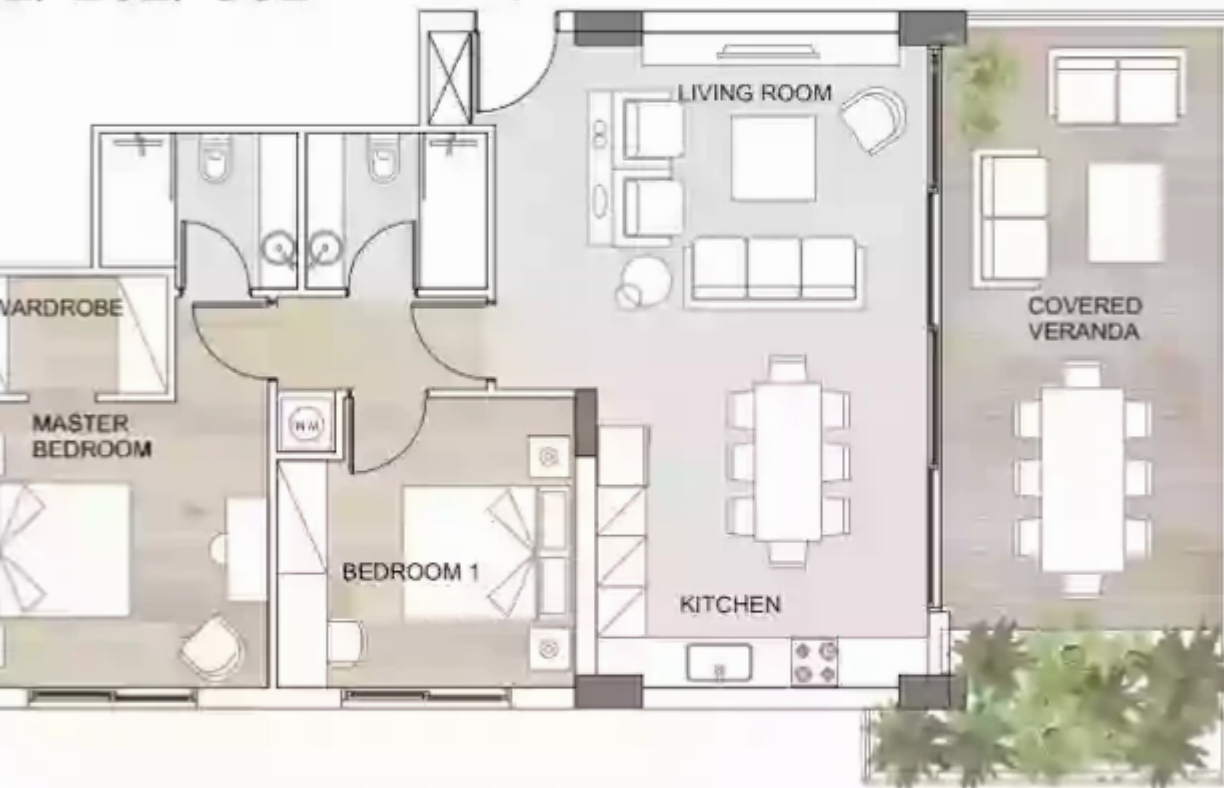


2/ 202/ 302



2 bedrooms, 86 sq.m.

Limassol, Pissouri-4607 , Cyprus

Offered at: € 540,000

Estate ID: 29852

Ref: J3390L1295



102/ 202/ 302





NET internal area: **86**



Bathrooms: **2**



Bedrooms: **2**



Parking spaces: **1 cars**



Available from: **2024-04-23**



Offered at: **540,000**



Type: **Apartment**



Veranda: **26 m²**

Apartment 302 - Spacious 2-Bedroom Property Discover this fantastic apartment for sale, featuring 2 bedrooms and a total indoor area of 86 sq.m. The covered veranda provides an additional 26 sq.m. of outdoor space, perfect for enjoying the views and fresh air. The property also comes with the convenience of 1 parking space and a storage area of 6 sq.m., providing ample room for your belongings. This well-designed apartment offers a comfortable and modern living space, making it an excellent opportunity for buyers looking for a cozy home in a convenient location...

Estate on map:

