

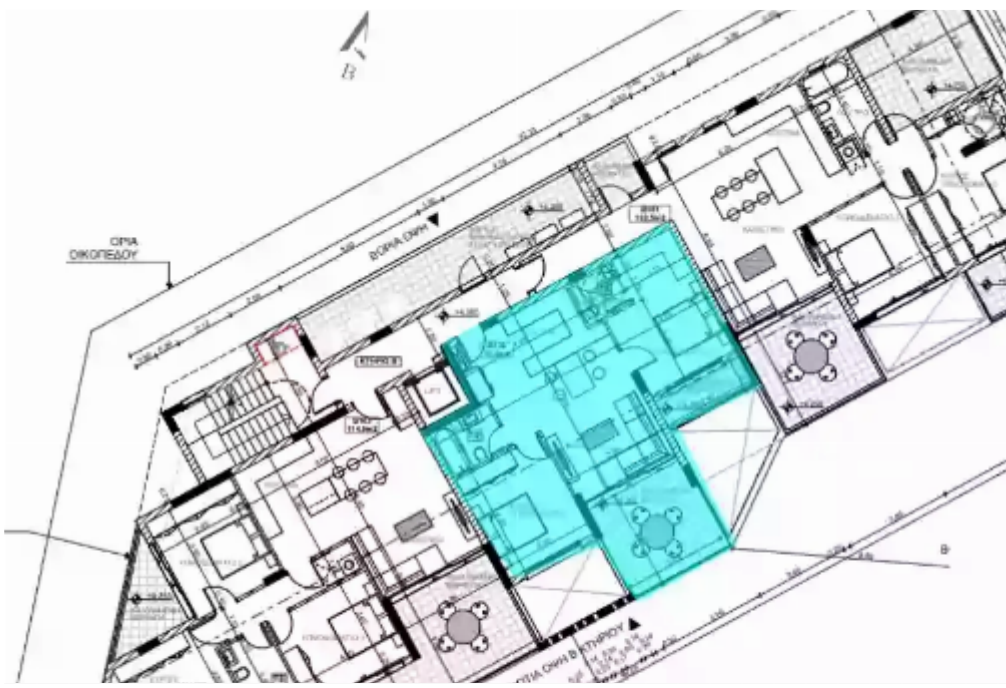
2 bedrooms, 75

Limassol, Spyrou-Kyprianou-St-Potamos-Germasogeias-4042 ,
Cyprus

Offered at: € 530,000

Estate ID: 33846

Ref: J4449L1737





NET internal area: **75**



Bathrooms: **2**



Bedrooms: **2**



Parking spaces: **1 cars**



Available from: **2024-04-24**



Offered at: **530,000**



Type: **Apartment**



Veranda: **16 m²**

Welcome to B102, where chic urban living meets luxurious comfort in this meticulously designed 2-bedroom apartment. Situated within an exclusive gated community with 24/7 CCTV surveillance, this apartment offers both security and style. With covered parking spaces and storage rooms, convenience and safety are seamlessly integrated into everyday life. Enjoy year-round comfort with underfloor water heating and VRV conditioning, ensuring a cozy ambiance throughout the apartment. The high ceilings, reaching an impressive 3.15 meters, add to the sense of spaciousness and sophistication in every room. Spanning 91.9 square meters, this thoughtfully crafted apartment includes covered verandas,...

Estate on map:

