

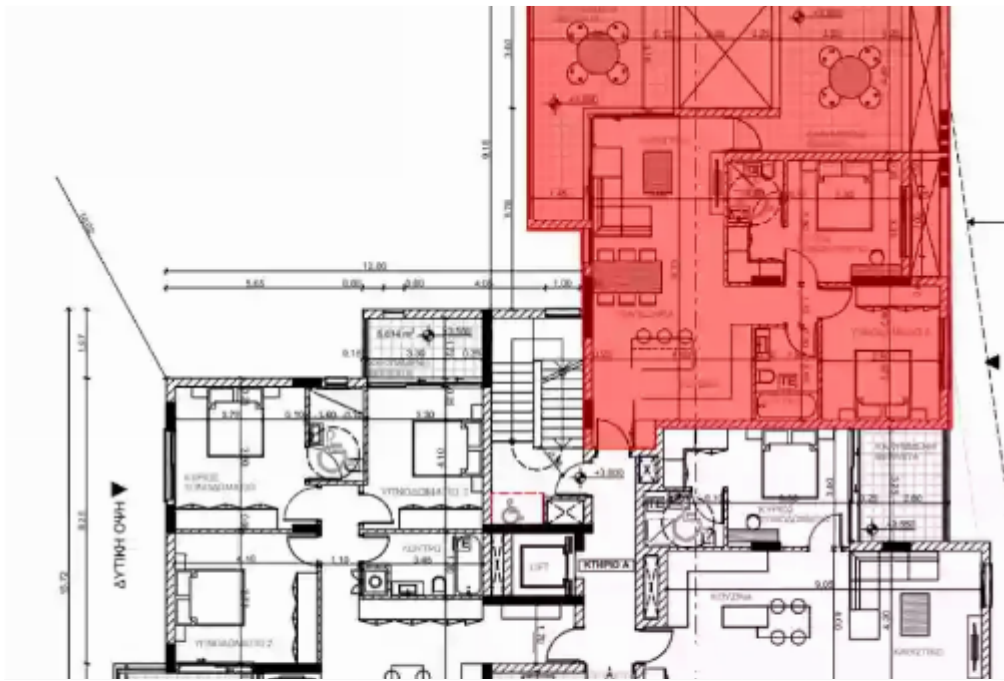
2 bedrooms, 85

Limassol, Spyrou-Kyprianou-St-Potamos-Germasogeias-4042 ,
Cyprus

Offered at: €640,000

Estate ID: 33857

Ref: J4448L1727





NET internal area: **85**



Bathrooms: **2**



Bedrooms: **2**



Parking spaces: **1 cars**



Available from: **2024-04-24**



Offered at: **640,000**



Type: **Apartment**



Veranda: **34 m²**

Welcome to your dream residence nestled within a gated community offering round-the-clock CCTV surveillance for your peace of mind. This luxurious apartment boasts covered parking spaces and storage rooms, ensuring ample storage and security for your belongings. Experience unparalleled comfort with underfloor water heating and VRV conditioning, allowing you to maintain the perfect temperature year-round. The apartment features soaring ceilings at an impressive 3.15 meters, adding to the sense of space and grandeur. Apartment A101 offers a well-appointed layout, comprising two bedrooms plus an additional room, ideal for use as a study or guest bedroom. With a total area of 119.2 square ...

Estate on map:

