



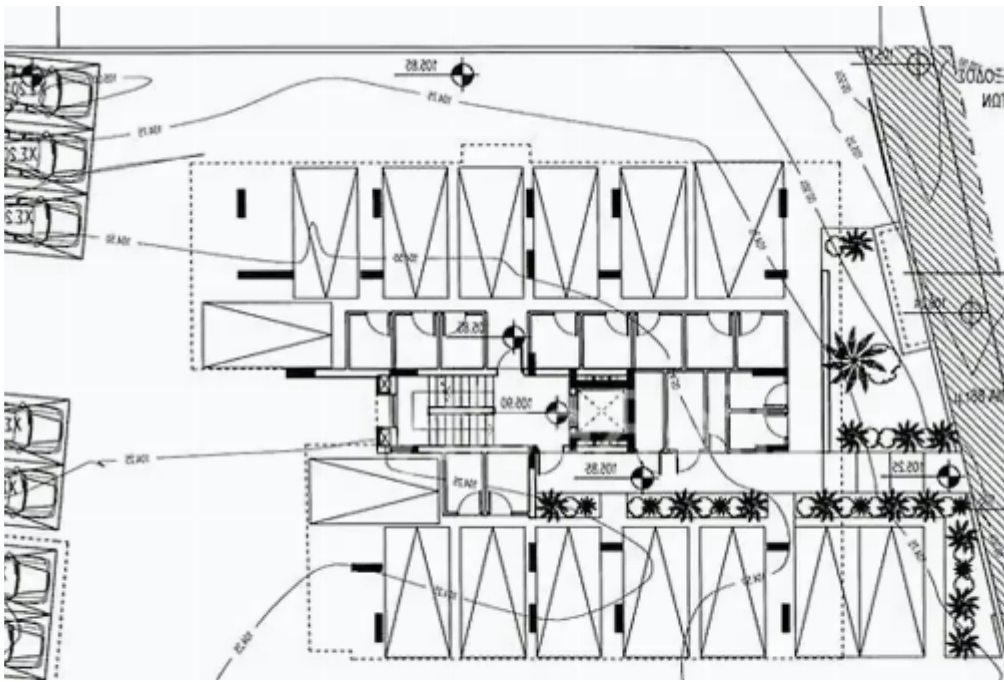
## 2-bedroom apartment f?r s?le

Limassol, Pano-Polemidia-4130 , Cyprus

**Offered at:** € 295,000

**Estate ID:** 34268

**Ref:** ba5227703





NET internal area: **80**



Bathrooms: **2**



Bedrooms: **2**



Parking spaces: **Covered cars**



Available from: **2024-04-25**



Offered at: **295,000**



Type: **Apartment**

""""""""""This impressive three-floor building consisting ten apartments and two penthouses, nestled in a luxurious neighborhood in Limassol while being conveniently close to various amenities. Just a 5-minute drive from the city center and a les than one minute from the highway, it offers easy access to everything you need. With high-quality finishes throughout, these residences present an attractive opportunity for both renters and potential buyers. Positioned just a short 10-minute drive from the beach and conveniently close to schools, banks, and markets, these apartments offer the perfect blend of luxury and convenience. With such exceptional features and amenities, this building gua...

# Estate on map:





Life Realty