



3-bedroom apartment f?r s?le

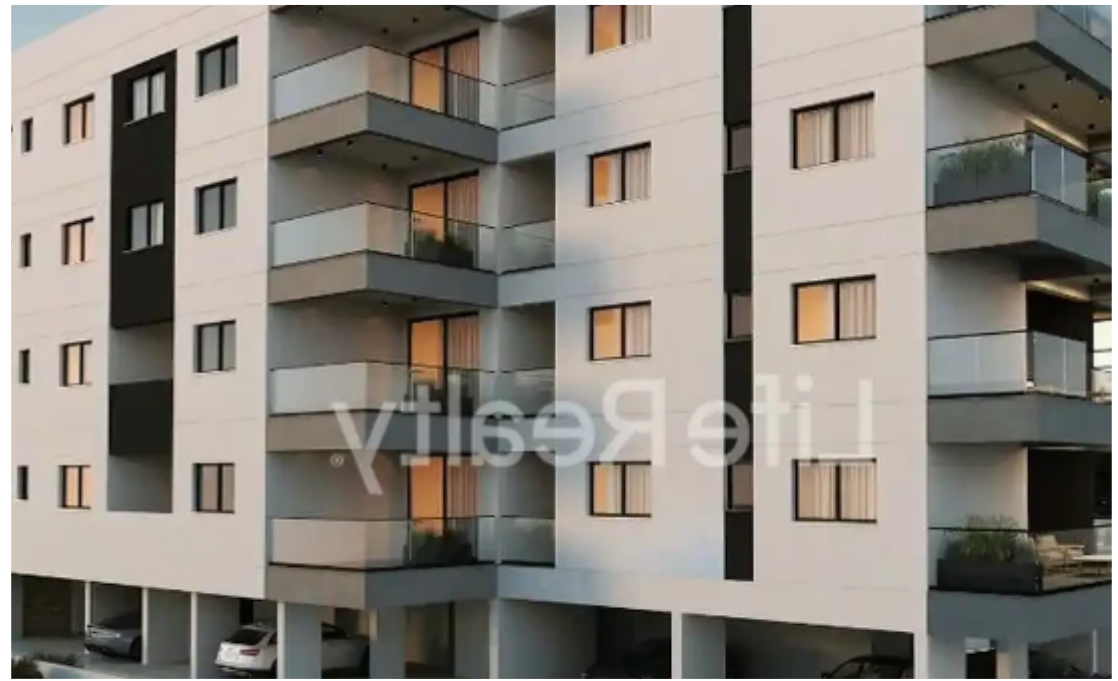
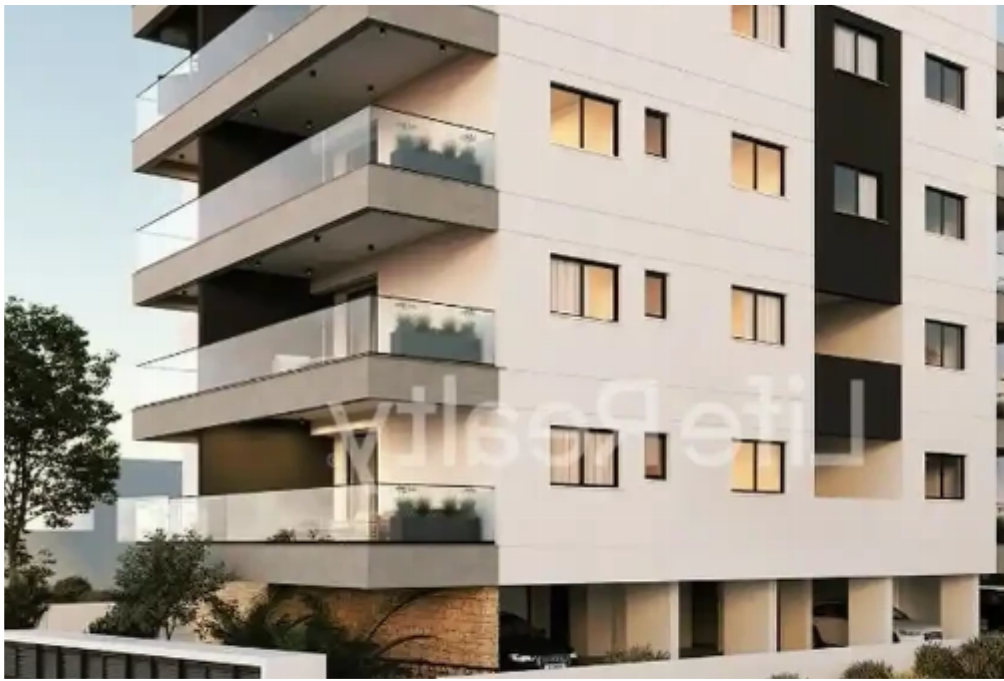
€395.000

Limassol, Era-Apollon-Petros-And-Pavlos-3075 , Cyprus

Offered at: € 395,000

Estate ID: 34537

Ref: ba5229622





NET internal area: **96**



Bathrooms: **3**



Bedrooms: **3**



Parking spaces: **Covered cars**



Available from: **2024-04-26**



Offered at: **395,000**



Type: **Apartment**

This outstanding four-floor building comprises 17 apartments and 3 penthouses and is situated in the Omonoia area. Located in the popular Petrou & Pavlou area in Limassol, it is conveniently close to schools, banks, and markets. This is an ultra-modern apartment development, situated within the heart of the city, just a 5-minute drive from Limassol Marina and with easy access to the highway. Here are some key features you can expect from this luxury building: - Gated parking. - Safety Doors. - Video entry system. - Certificate of Energy Efficiency A. Availability: Apartment 101: - Internal area: 96m² - Covered veranda: 23m² Price: €395.000 +VAT Apartment 301: - Internal area: 96m²...

Estate on map:

