



2-bedroom apartment for sale

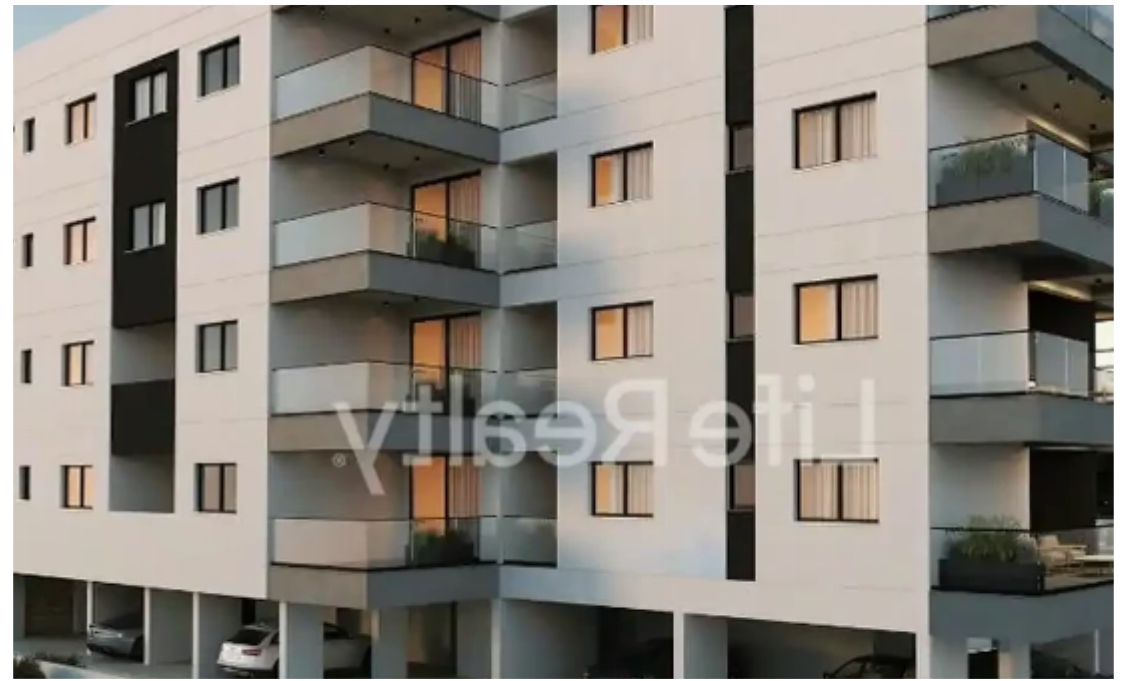
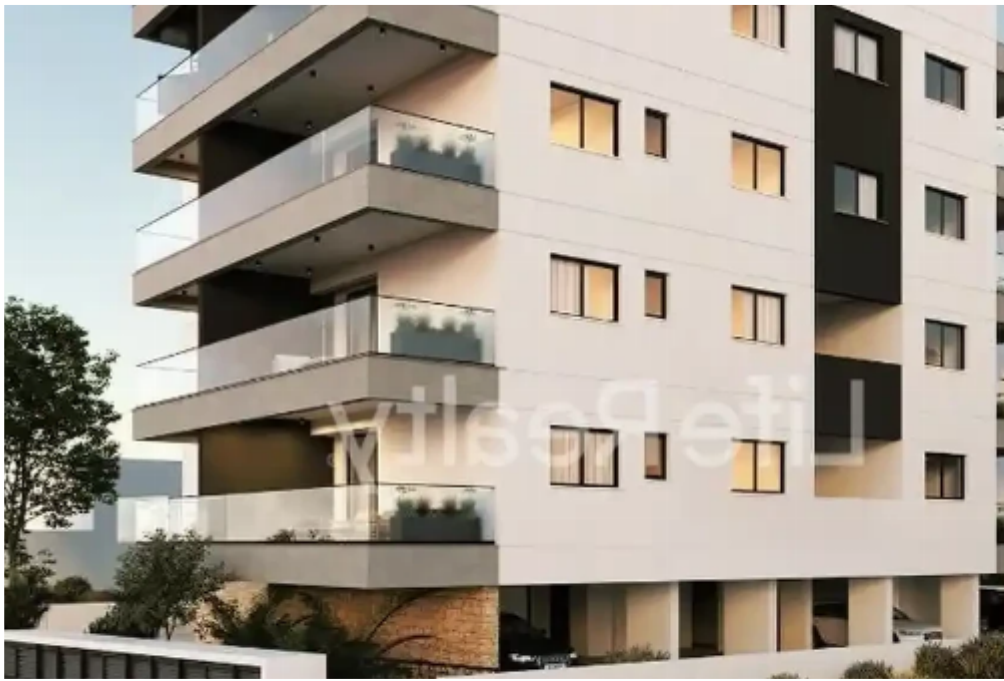
€315.000

Limassol, Era-Apollon-Petros-And-Pavlos-3075 , Cyprus

Offered at: €315,000

Estate ID: 34541

Ref: ba5229621





NET internal area: **75**



Bathrooms: **2**



Bedrooms: **2**



Parking spaces: **Covered cars**



Available from: **2024-04-26**



Offered at: **315,000**



Type: **Apartment**

""""""This outstanding four-floor building comprises 17 apartments and 3 penthouses and is situated in the Omonoia area. Located in the popular Petrou & Pavlou area in Limassol, it is conveniently close to schools, banks, and markets. This is an ultra-modern apartment development, situated within the heart of the city, just a 5-minute drive from Limassol Marina and with easy access to the highway. Here are some key features you can expect from this luxury building: - Gated parking. - Safety Doors. - Video entry system. - Certificate of Energy Efficiency A. Availability: Apartment 104: - Internal area: 75m2 - Covered veranda: 21m2 Price: €315.000 +VAT Apartment 405: - Internal area...

Estate on map:

