

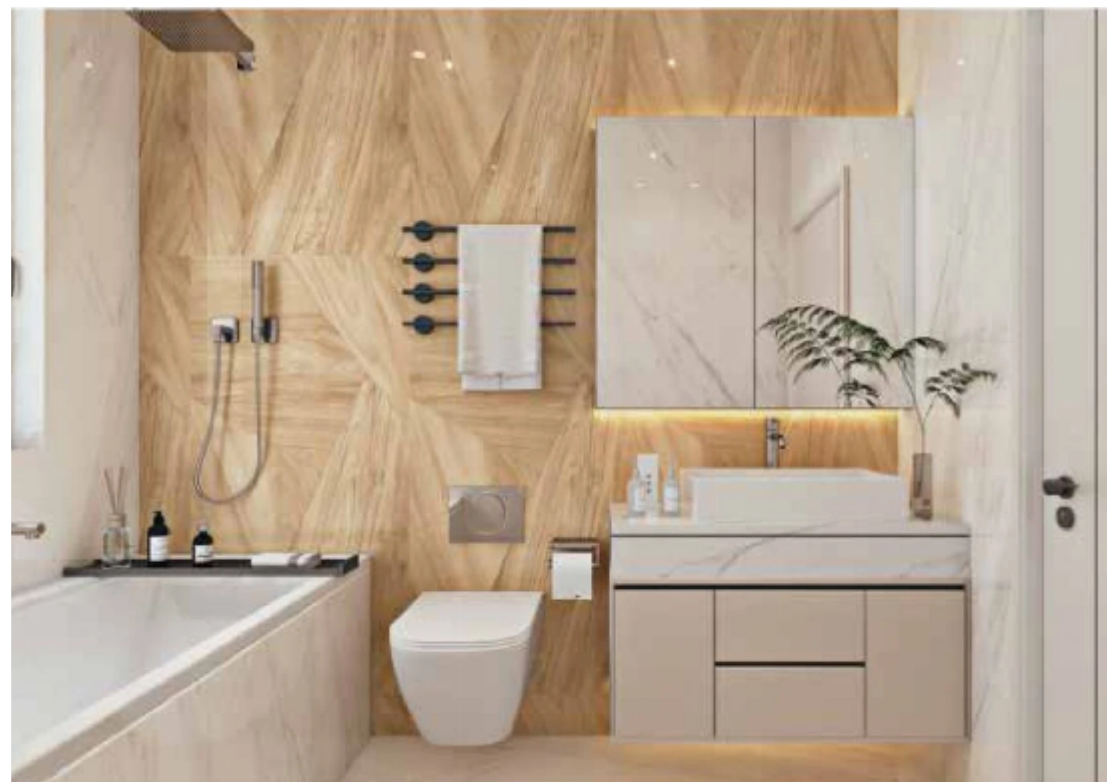
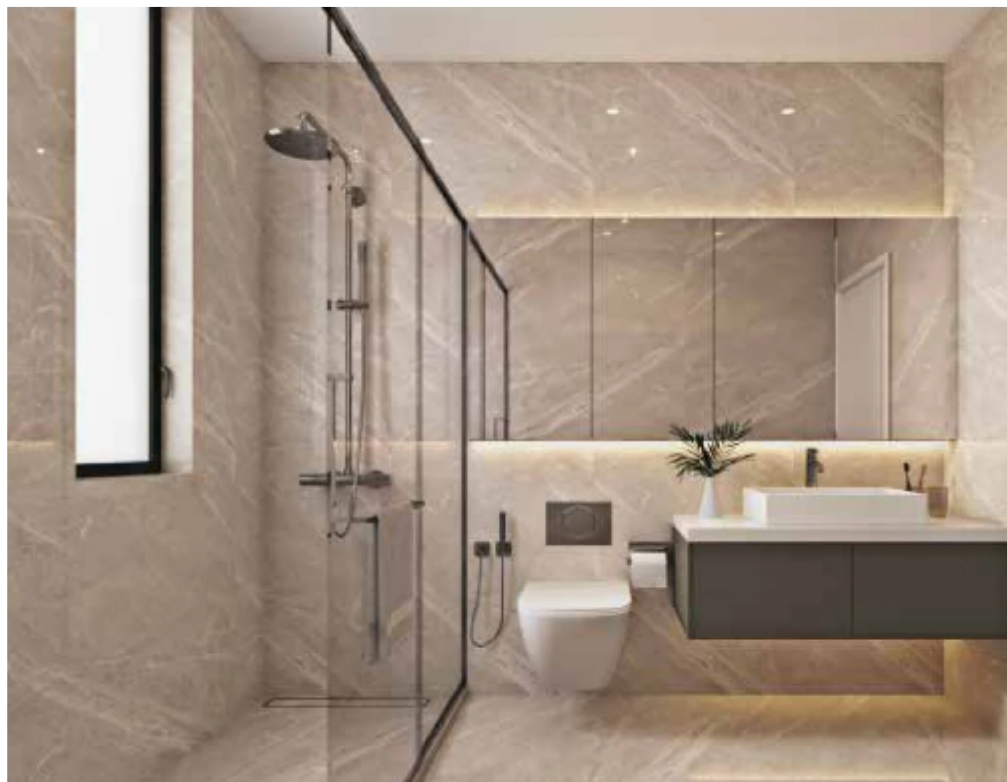
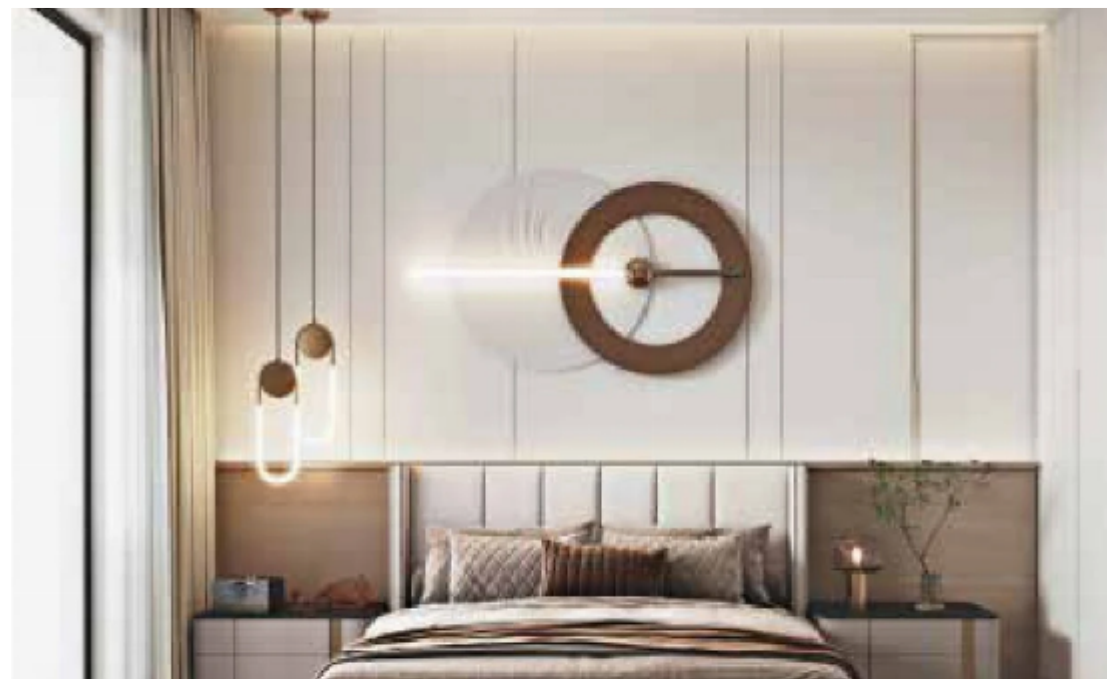
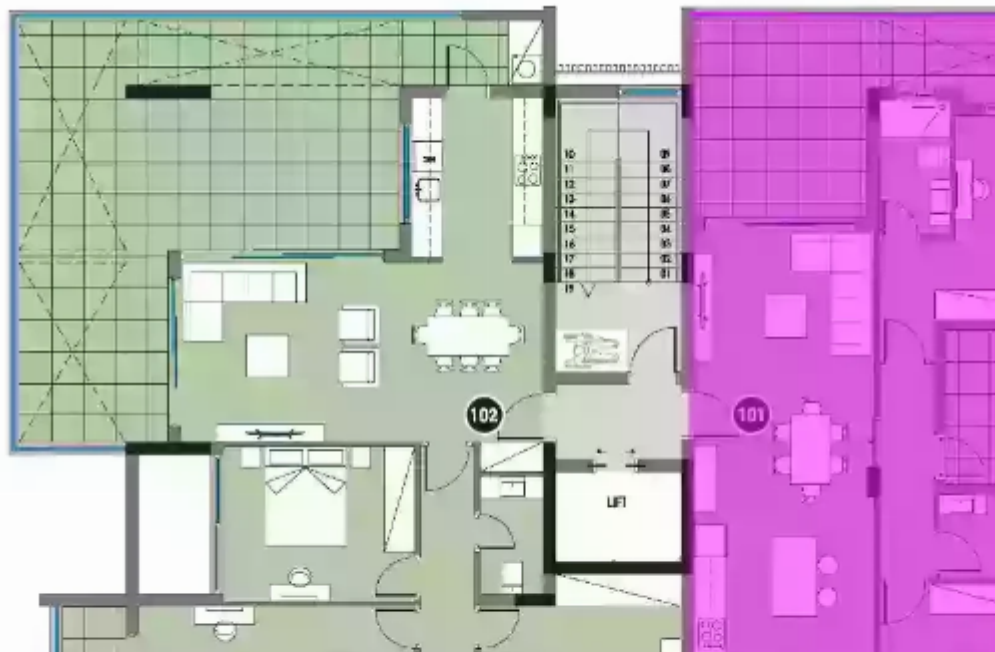
## 2 bedrooms, 110

Limassol, Linopetra-School-Agios-Stylianos-Agios-Athanasios-4102 ,  
Cyprus

**Offered at:** € 650,000

**Estate ID:** 38960

**Ref:** J4503L2008





NET internal area: **110**



Bathrooms: **2**



Bedrooms: **2**



Parking spaces: **1 cars**



Available from: **2024-05-15**



Offered at: **650,000**



Type: **Apartment**



Veranda: **26 m²**

Presenting Apartment ?301 at Palm V, an exquisite residence within the exclusive Columbia Area of Limassol, Cyprus. This luxurious unit features two spacious bedrooms, two elegant bathrooms, and an indoor area of 110 square meters, with a total area of 154 square meters. Priced at \$650,000, it includes a designated parking space and a charming veranda spanning 26 square meters. Nestled within the breathtaking private estate of Palm V, this residence offers an unparalleled living experience that seamlessly blends modernity with sophistication. Surrounded by serene landscaped gardens, Palm V provides a contemporary oasis while still being conveniently located in the vibrant town center, i...



# Estate on map:

