

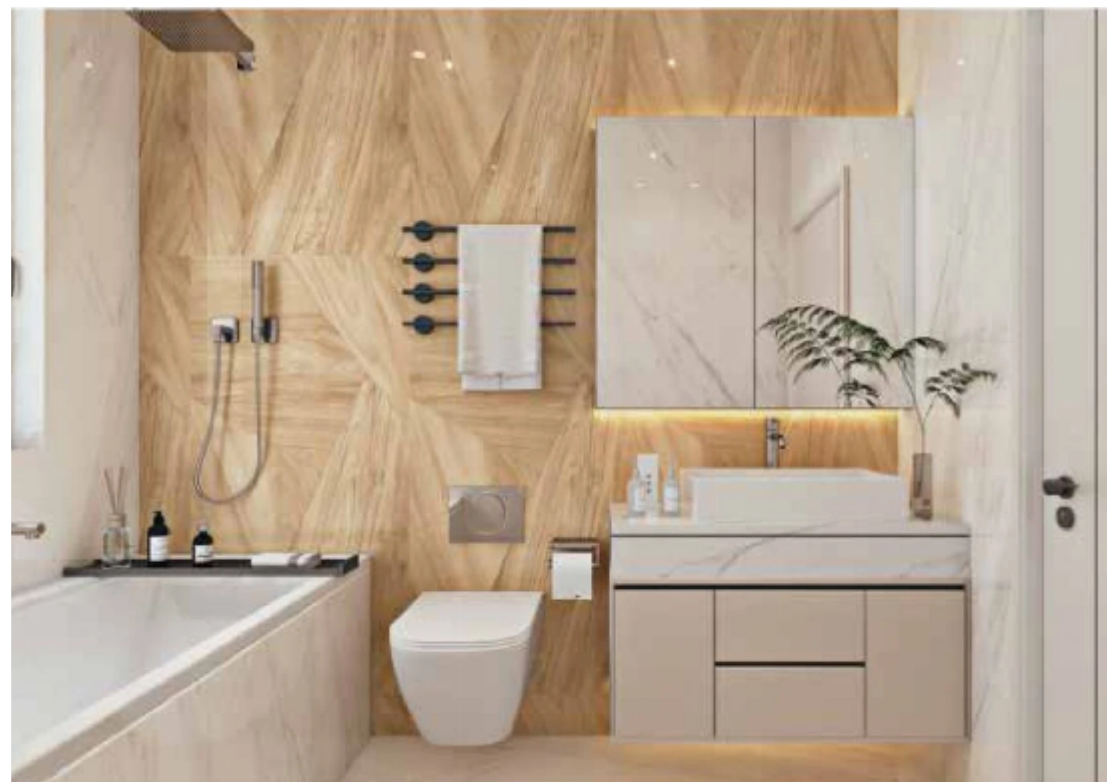
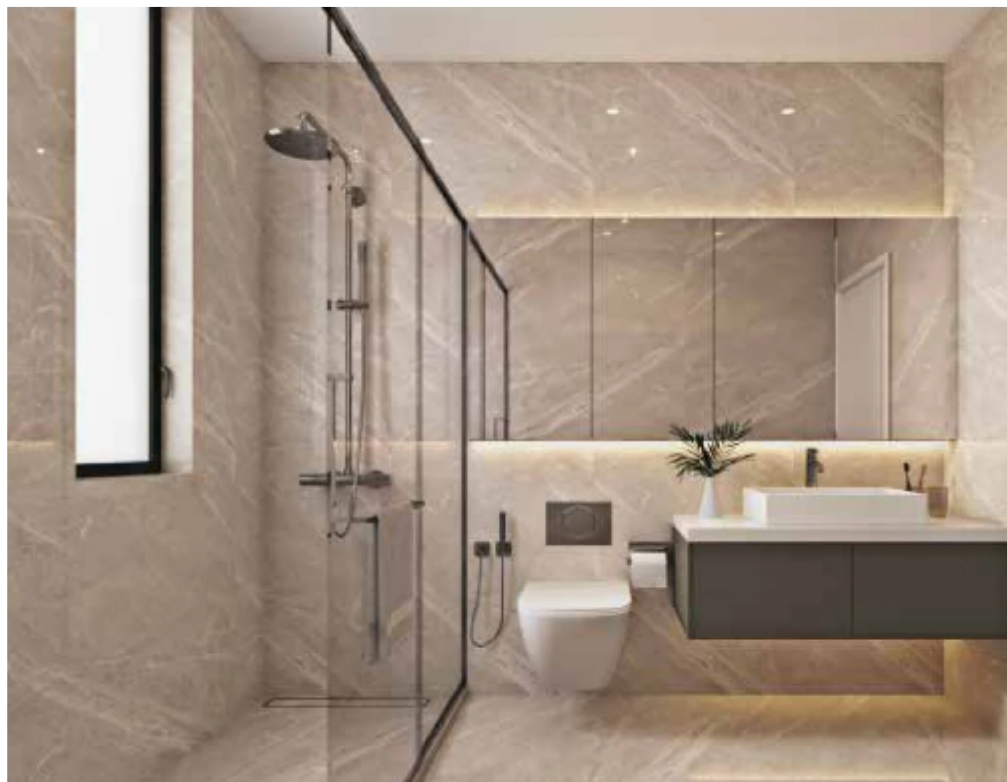
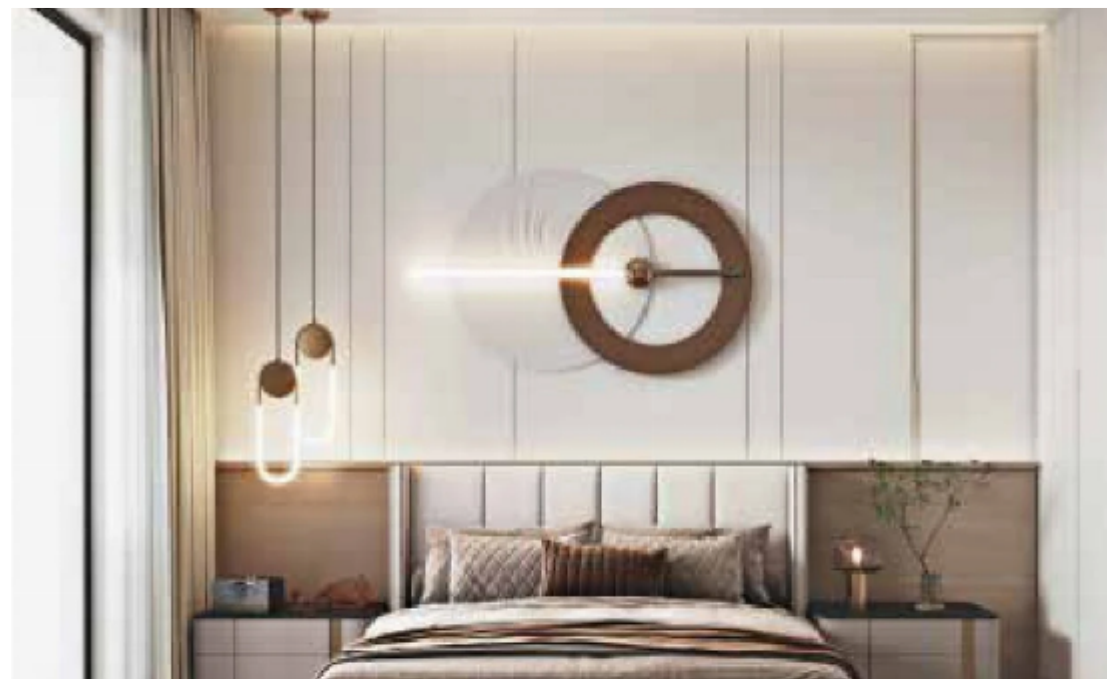
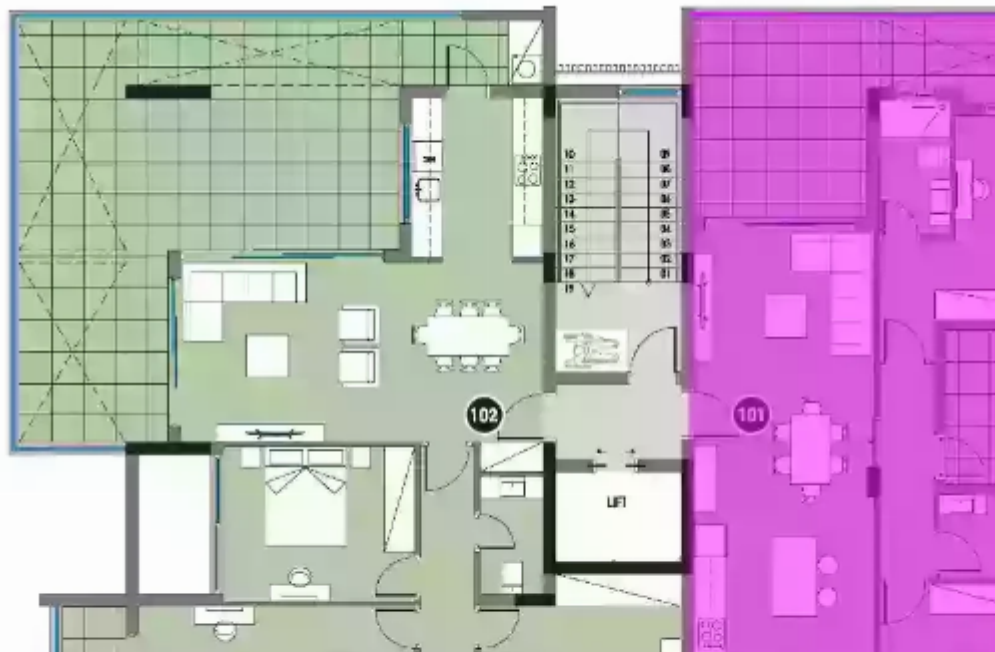
3 bedrooms, 105

Limassol, Linopetra-School-Agios-Stylianos-Agios-Athanasios-4102 ,
Cyprus

Offered at: € 585,000

Estate ID: 38961

Ref: J4503L2006





NET internal area: **105**



Bathrooms: **3**



Bedrooms: **3**



Parking spaces: **1 cars**



Available from: **2024-05-15**



Offered at: **585,000**



Type: **Apartment**



Veranda: **31 m²**

Introducing Apartment ?202 at Palm V, a luxurious residence nestled within the exclusive Columbia Area of Limassol, Cyprus. This stunning unit features three spacious bedrooms, three elegant bathrooms, and an indoor area of 105 square meters, with a total area of 155 square meters. Priced at \$585,000, it includes a designated parking space and a charming veranda spanning 31 square meters. Located within the breathtaking private estate of Palm V, this residence offers an unparalleled living experience, seamlessly blending modernity with sophistication. Surrounded by serene landscaped gardens, Palm V provides a contemporary oasis while still being in close proximity to the vibrant town ce...

Estate on map:

