



Residential land 15000 m²

€2.000.000

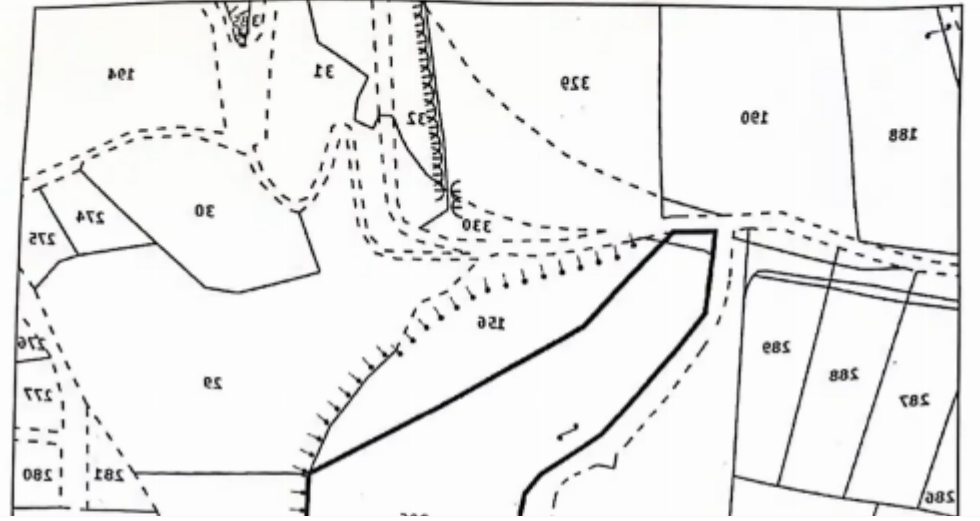
Paphos, Kouklia-Afrodite-Hills-Pafou-8500 , Cyprus

Offered at: €2,000,000

Estate ID: 39040

Ref: ba5249940

Δια Βαβυλών : 13\08\5051
Πρόσθετος σχέσιον : 6\X\4\1998





Total plot's-land's area: **15000 m²**



Available from: **2024-05-15**



Offered at: **2,000,000**



Type: **Residential**

Exceptional opportunity to secure this big plot in Nikokleia village. The property is located close to the community's center and has excellent access towards the neighbouring communities and the highway. Within 10 minutes away from Paphos Airport, 10 minutes from Aphrodite Hills and 15 minutes from Paphos town. There's also a gas station next to it. It has provision for water, electricity and an even flat shape with a registered road along its northern boundary with a frontage of the main road. 15kkm from Paphos 20kkm from Pissouri 10kkm from Paphos international airport 10kkm from

Aphrodite Hills Size: 15000 square meters Planning zone: H3 Density: 60% Coverage: 35% For mor...

Estate on map:

