



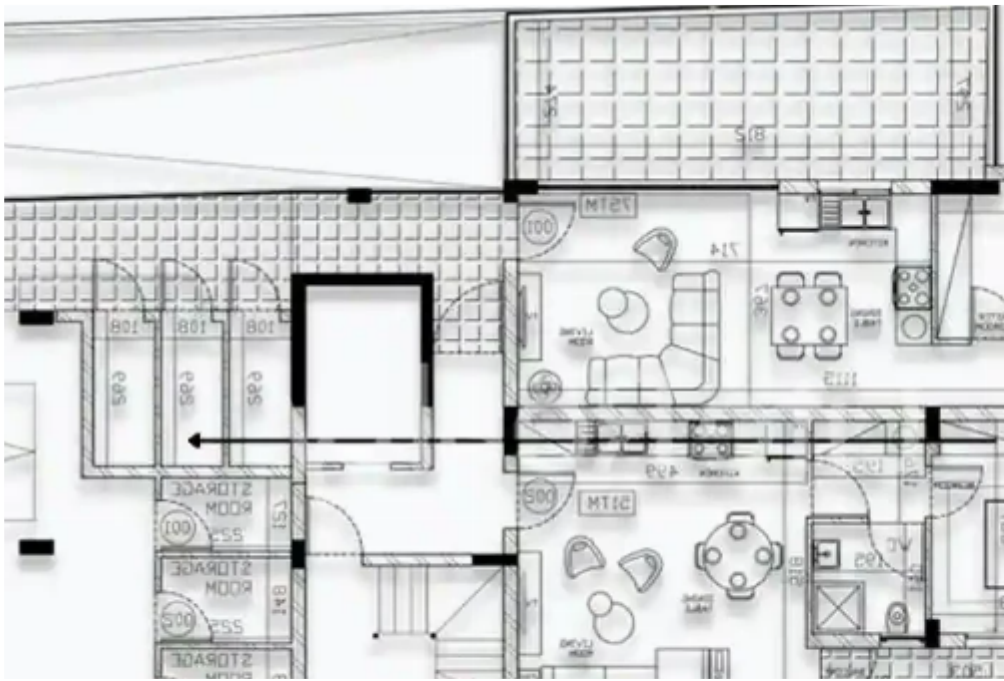
2-bedroom apartment f?r s?le

Limassol, Era-Apollon-Petros-And-Pavlos-3075 , Cyprus

Offered at: € 320,000

Estate ID: 40835

Ref: ba5261724





Bathrooms: **2**



Bedrooms: **2**



Parking spaces: **Covered cars**



Available from: **2024-05-23**



Offered at: **320,000**



Type: **Apartment**

""""""This outstanding three-floor building, comprising 8 exquisite apartments, is situated in the popular area Petrou & Pavlou in Limassol. Featuring top-quality finishes, it stands as an attractive property for potential buyers. These apartments are conveniently close to schools, banks, and markets.

Positioned in a ideal area with easy access to the highway and just a 7-minute drive from Limassol Marina, they offer a luxurious and convenient lifestyle. Here are some key features you can expect from this luxury building: - Gated residence. - Video entry system. - Photovoltaic system. - Parking bar with a remote control Available Top Floor Apartment: - Covered area: 81m2 - Covered ...

Estate on map:

