



1-bedroom apartment f?r s?le

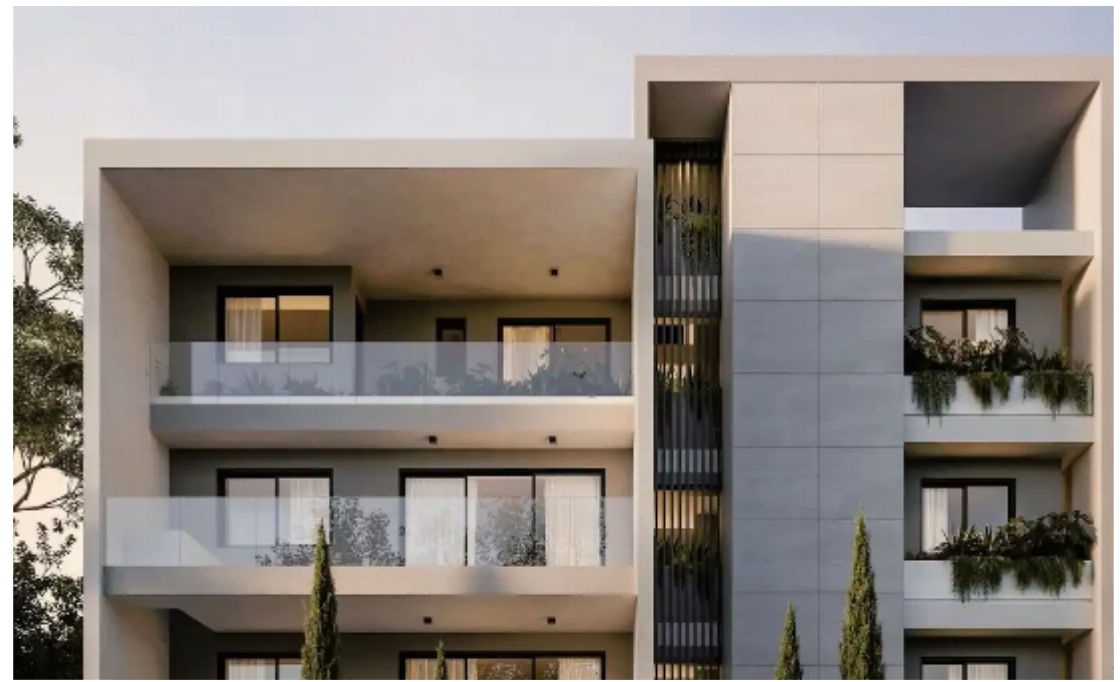
€247.000

Limassol, Columbia-Chalomantres-Potamos-Germasogeias-4043 ,
Cyprus

Offered at: € 227,000

Estate ID: 48241

Ref: ba5306676





NET internal area: **69**



Bathrooms: **1**



Bedrooms: **1**



Parking spaces: **Covered cars**



Available from: **2024-07-09**



Offered at: **227,000**



Type: **Apartment**

Featuring eight 1 - 2 bedroom apartments arranged over 3 floors, with parking on the ground floor. Located in Limassol's popular Columbia area, this is the perfect opportunity for investment or as a primary residence with excellent proximity to the main high street, and access to the main highway.

The orientation of the project allows the apartments to command either south or west facing views from their private covered verandas. Apartment

Specification: ?Bedrooms: 1 ?Bathrooms: 1 ?Parking: 1 ?Indoor area: 44 m² ?Covered veranda: 21 m² ?Common area: 4 m² ?Total area: 65 m²

Location: ?Popular and affluent residential area ?Access to Highway - 2 minute drive ?G...

Estate on map:



