

ΒΕΡΑΝΤ

ΤΡΑΠΕΖΑΡΙΑ



ΣΑΛΟΝΙ

ΥΠΝΟΔΩΜΑΤΙΟ
01



ΜΠΑΝΙΟ



ΥΠΝΟΔΩΜΑΤΙΟ
02



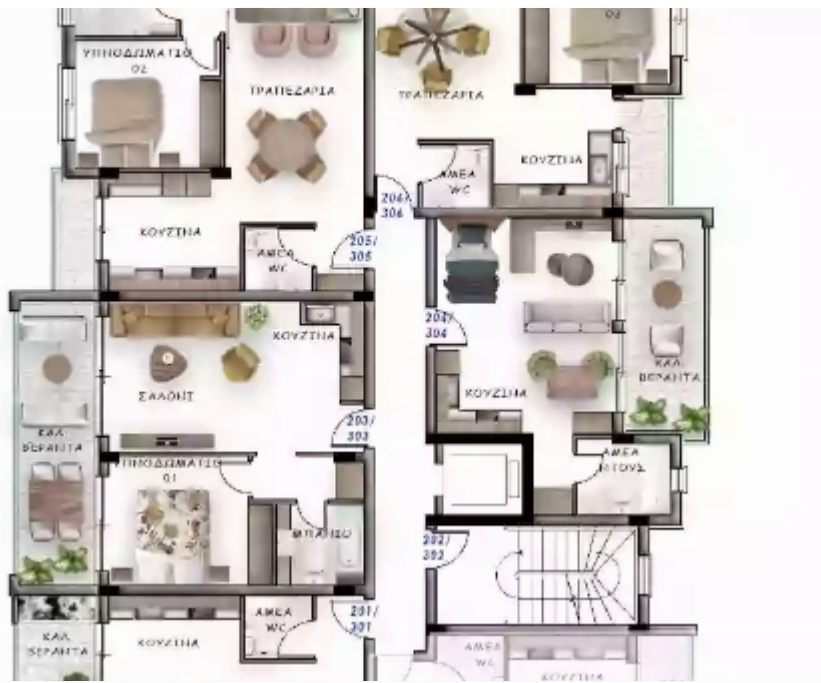
2 bedrooms, 81

Limassol, Polemidia-Lyceum-Apos-Varnavas-Kato-Polemidia-4152 ,
Cyprus

Offered at: € 270,000

Estate ID: 48298

Ref: J4567L2200





NET internal area: **81**



Bathrooms: **2**



Bedrooms: **2**



Parking spaces: **1 cars**



Available from: **2024-07-09**



Offered at: **270,000**



Type: **Apartment**



Veranda: **20 m²**

Apartment 302 - Modern Urban Living in Limassol Key Details Bedrooms: 2 Bathrooms: 2 Internal Area: 81 m² Covered Verandas: 20 m² Parking Spaces: 1 Total Area: 115 m² Description Introducing Apartment 302, a stylish two-bedroom, two-bathroom residence located in the vibrant city of Limassol. This apartment is designed to offer contemporary living with spacious interiors and premium features, perfect for those seeking comfort and convenience. Interior Features Bedrooms: Two generously sized bedrooms designed for relaxation and tranquility. Large windows allow for plenty of natural light, creating a bright and welcoming environment. Bathrooms: Two modern bathrooms, incl...

Estate on map:

