



## **Residential land 238 m<sup>2</sup>**

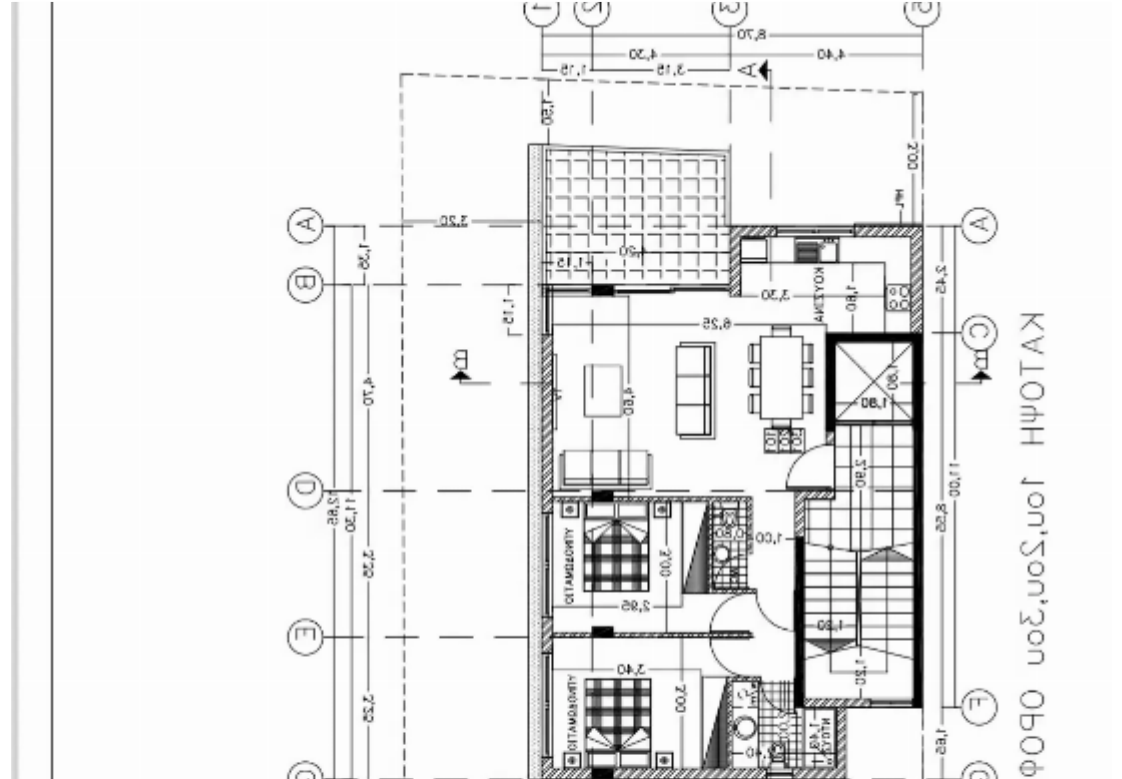
**€315.000**

Limassol, Super-Home-Center-Timou-Prodromou-Mesa-Geitonia-4004 , Cyprus

**Offered at:** € 310,000

**Estate ID:** 52327

**Ref:** ba5351943





Total plot's-land's area: **238 m<sup>2</sup>**



Available from: **2024-07-23**



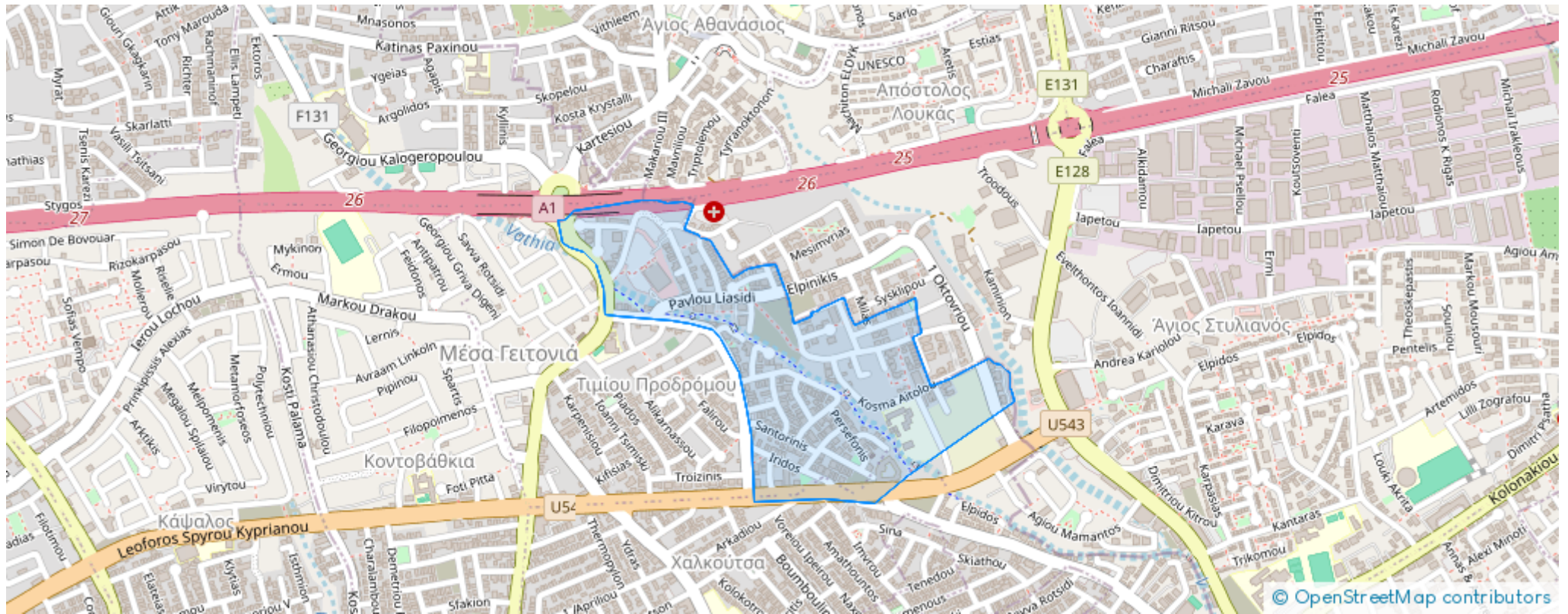
Offered at: **310,000**



Type: **Residential**

Presenting an exceptional opportunity to acquire a prime plot of land situated in the vibrant city center and business hub of Agios Zonis. Spanning 238 square meters, this strategically located property offers unparalleled potential for development with ready architectural plans. Positioned just a stone's throw away from Intercollege, this plot is ideal for constructing a modern residential building. The architectural plans allow for four floors of stylish two-bedroom apartments, each designed to meet the highest standards of urban living. Additionally, the top floor is designated for an exclusive penthouse, promising luxurious and expansive living spaces. This prime locatio...

# Estate on map:



# ΚΑΤΟΧΗ ΤΩΝ ΟΡΟΦΩΝ

