



Residential land 1207 m²

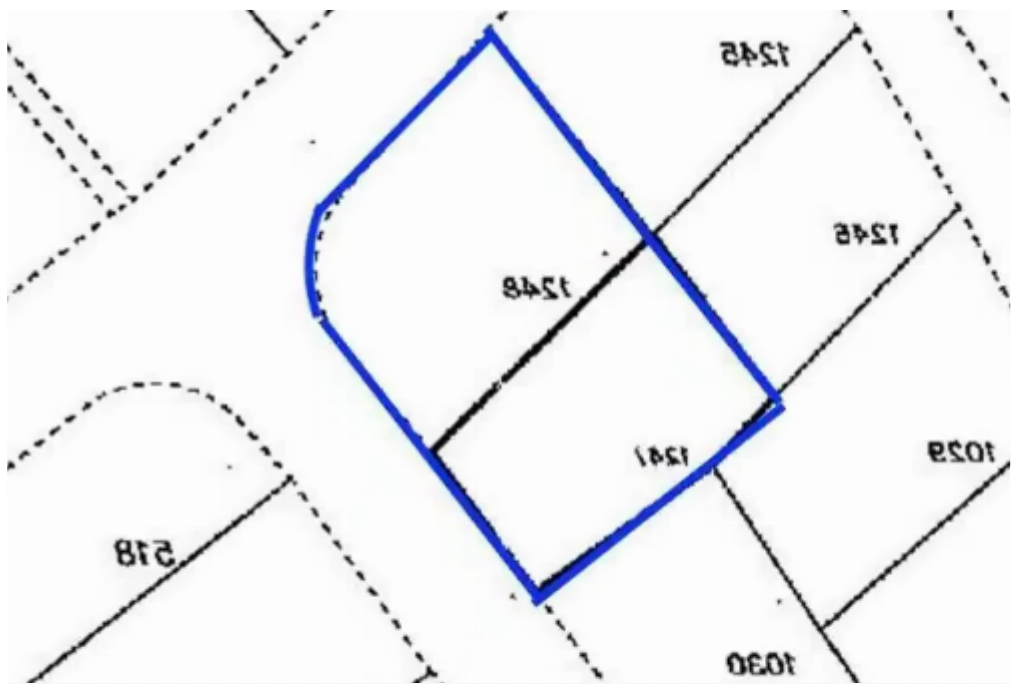
€540.000

Paphos, Primary-Schoold-Geroskipou-8200 , Cyprus

Offered at: €325,000

Estate ID: 53978

Ref: ba5362598





Total plot's-land's area: **661 m²**



Coverage: **50 %**



Density: **100 %**



Available from: **2024-07-30**



Offered at: **325,000**



Type: **Residential**

image not found or type unknown



Planning zone: **Ka5**

Located in the new popular residential area of Yeroskipou is a grouping of 4 plots, (2 only available, 546sqm + 661sqm) they can be sold separately or together making this the ideal purchase for every investor and potential homeowner. Each plot has a separate title deed, and one is a corner plot. The plots are situated on the west end of Yeroskipou 300m off the main road and within minutes of all amenities. These plots provides a unique opportunity to build spacious homes or apartments of up to three floors with commercial outlets. Nearby Amenities: - Paphos International Airport 15min - Beach 9min - Paphos Harbor 10min - Highway 5min - Medical Centre 3min...

Estate on map:

