

Residential land 532 m²

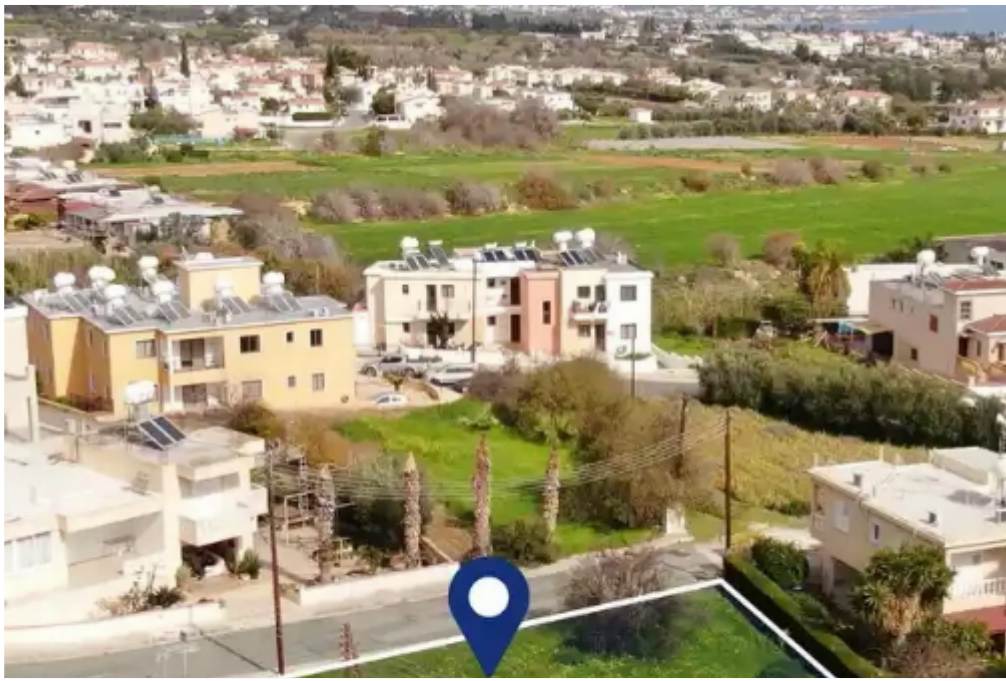
€112.000

Paphos, Empa-8250 , Cyprus

Offered at: € 112,000

Estate ID: 54221

Ref: ba5293864





Total plot's-land's area: **532 m²**



Available from: **2024-07-31**



Offered at: **112,000**



Type: **Residential**

""Corner plot available for sale in Empa, Paphos. The property is located along the main road of the village, Nicolaou Ellina, approximately 500m south of Apostolos Andreas Church and about 3km east of Chloraka's coastline. The area of the plot is 532 sq.m. and has a flat, even surface. The property occupies a corner position, with its eastern boundary adjacent to Nikolas Ellinas Street and its northern boundary to a dead-end road. The plot falls within the planning zone ??, for which the development status is defined by the Paphos Local Plan. The immediate area is characterized by residential units with sporadic amenities and services such as banks, restaurants, cafes, and shops. Th...

Estate on map:

