



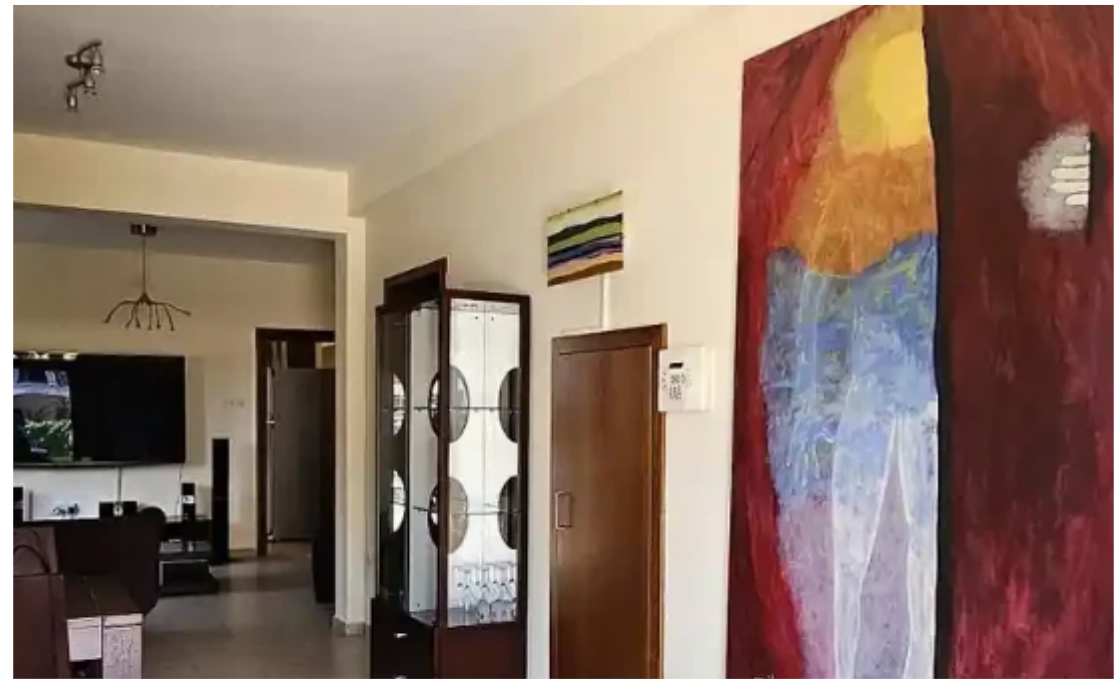
## **3-bedroom semi-detached to rent €1.600**

Limassol, Palodeia-4549 , Cyprus

**Offered at:** € 1,600

**Estate ID:** 55213

**Ref:** ba5372940





NET internal area: **155**



Bathrooms: **2**



Bedrooms: **3**



Parking spaces: **Uncovered cars**



Available from: **2024-08-13**



Offered at: **1,600**



Type: **SemidetachedHouse**

....."Semi-detached spacious and bright 3 bedrooms house in Palodia, in a quiet residential area. The house is very close to schools (Heritage, Pascal and The Island Private School of Limassol) , services and the center of Limassol. On the first floor there are three bedrooms. The master bedroom has an en suite bathroom. All the bedrooms have big wardrobes. A separate kitchen room with all electrical appliances included, air conditioners in all areas for hot and cold air, tinted and double glazing windows and roller shutters, garden with automatic watering, pergola and outdoor grill. There is also a storage room and solar water heater with pressure. Finally it has an Alarm Syst...

## Estate on map:



