



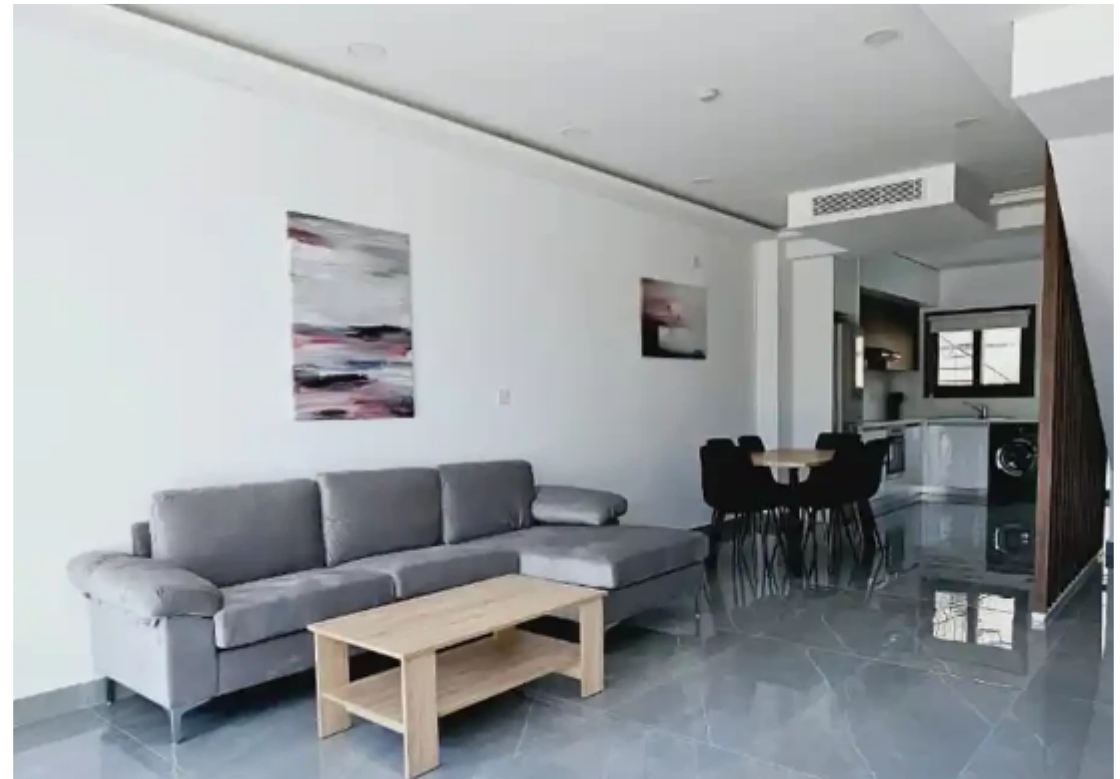
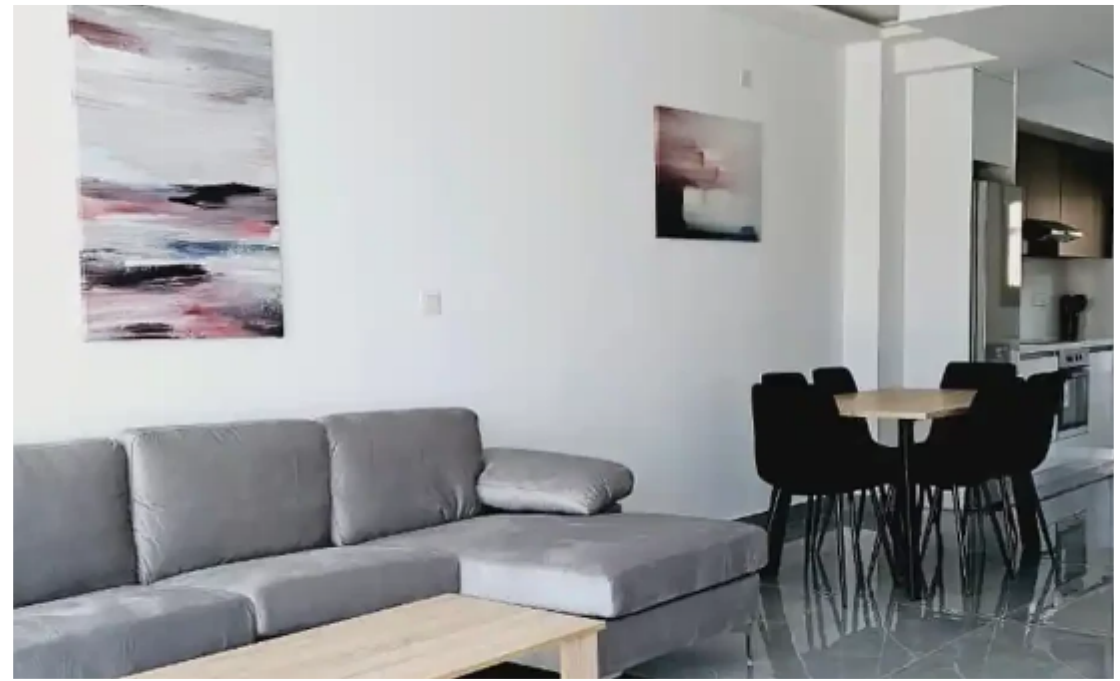
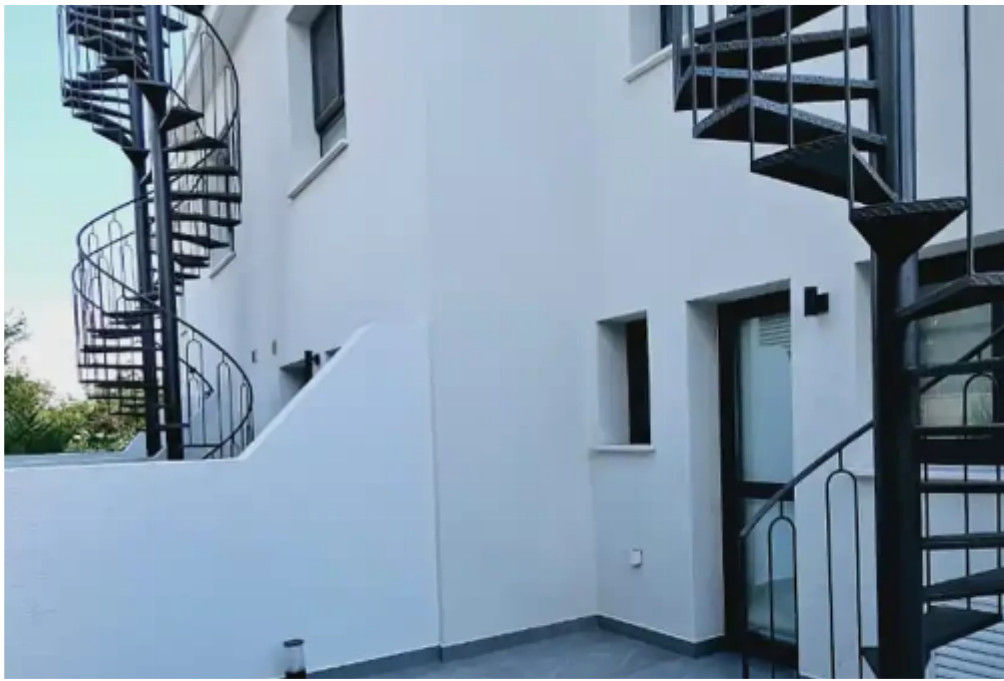
## 2-bedroom semi-detached to rent €2.100

Paphos, Empa-8250 , Cyprus

**Offered at:** €2,100

**Estate ID:** 60839

**Ref:** ba5421787





NET internal area: **95**



Bathrooms: **2**



Bedrooms: **2**



Parking spaces: **Uncovered cars**



Available from: **2024-09-07**



Offered at: **2,100**



Type: **SemidetachedHouse**

Brand New Town Houses in the Heart of Emba. The houses are fully equipped and fully loaded with anything and everything you may need for your everyday needs, you literally only need to stop at the local supermarket before you move in for your supplies. The houses are located close to all amenities, schools and services and is conveniently located for the best access to the rest of Paphos - There are also 7 houses to choose from including 3 bedroom options - all units are fully furnished and equipped and all units are brand new. The Townhouses all have VRV AC's throughout the units - 2 ensuite bedrooms with guest toilets on the ground floor and every house boasts its own roof terrace with...

# Estate on map:



