



## 2-bedroom apartment f?r s?le

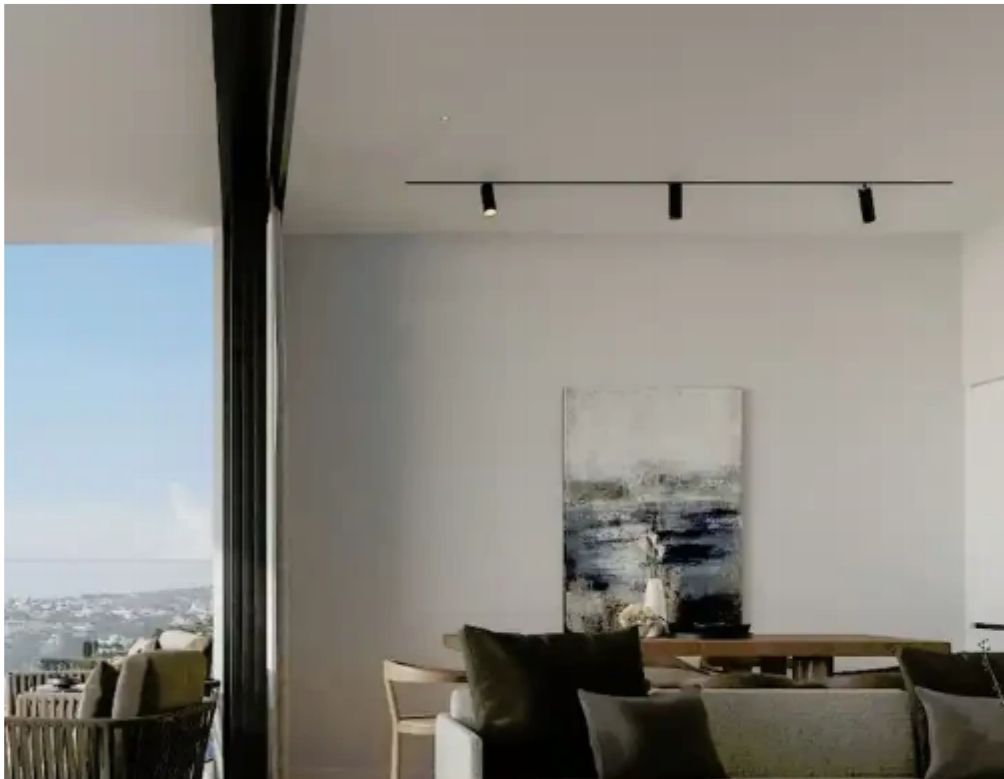
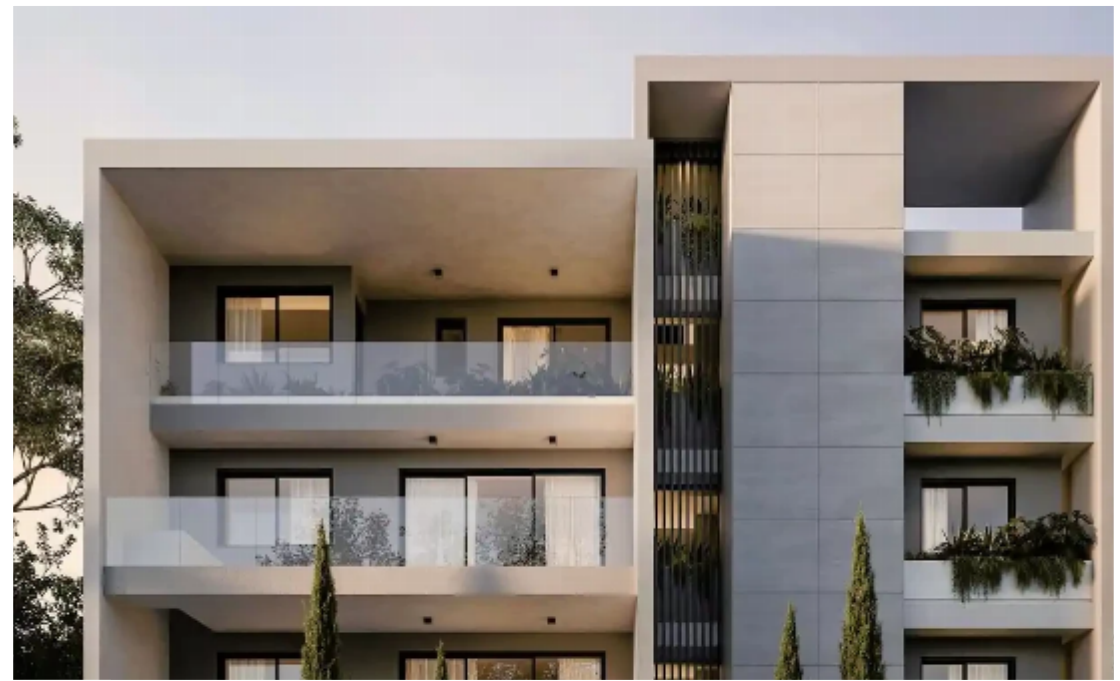
**€283.000**

Limassol, Columbia-Chalomantres-Potamos-Germasogeias-4043 ,  
Cyprus

**Offered at:** € 338,000

**Estate ID:** 61227

**Ref:** ba5426249





NET internal area: **84**



Bathrooms: **1**



Bedrooms: **2**



Parking spaces: **Covered cars**



Available from: **2024-09-11**



Offered at: **338,000**



Type: **Apartment**

Featuring eight 1 - 2 bedroom apartments arranged over 3 floors, with parking on the ground floor. Located in Limassol's popular Columbia area, this is the perfect opportunity for investment or as a primary residence with excellent proximity to the main high street, and access to the main highway. The orientation of the project allows the apartments to command either south or west facing views from their private covered verandas.

Apartment Specification: ?Bedrooms: 2 ?Bathrooms: 1 ?Parking: 1 ?Indoor area: 62 m<sup>2</sup> ?Covered veranda: 16 m<sup>2</sup> ?Common area: 6 m<sup>2</sup> ?Total area: 84 m<sup>2</sup> Investment Benefits: ? 10% Early-bird discounts for off-plan property ? 7% Rental...



# Estate on map:

