

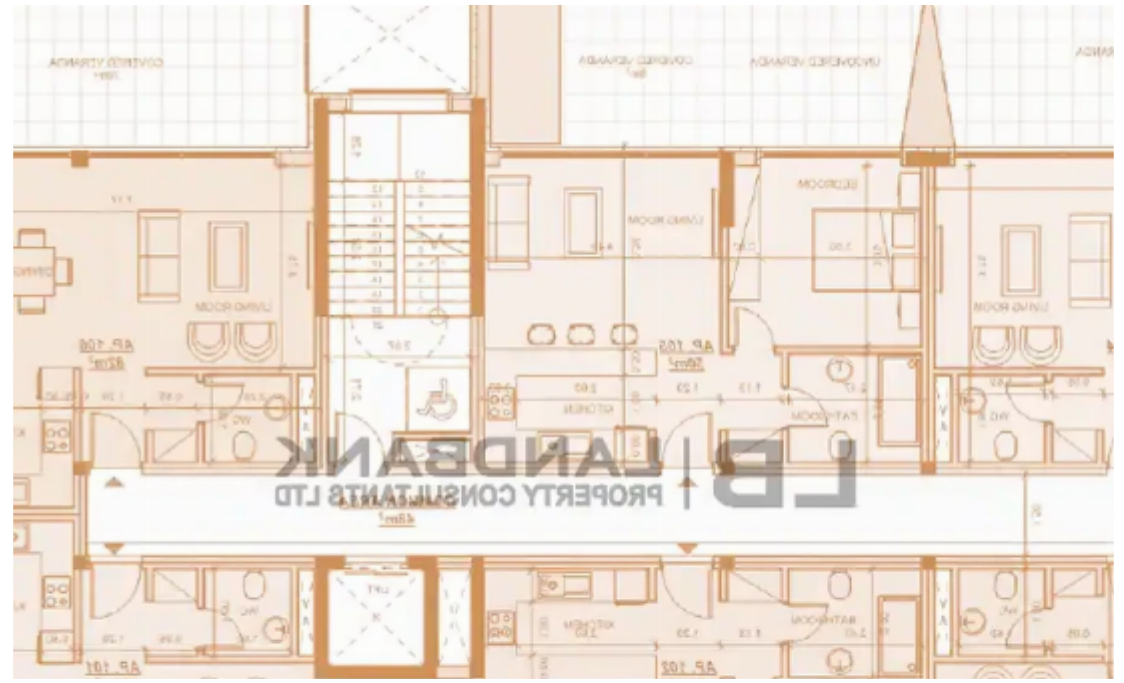
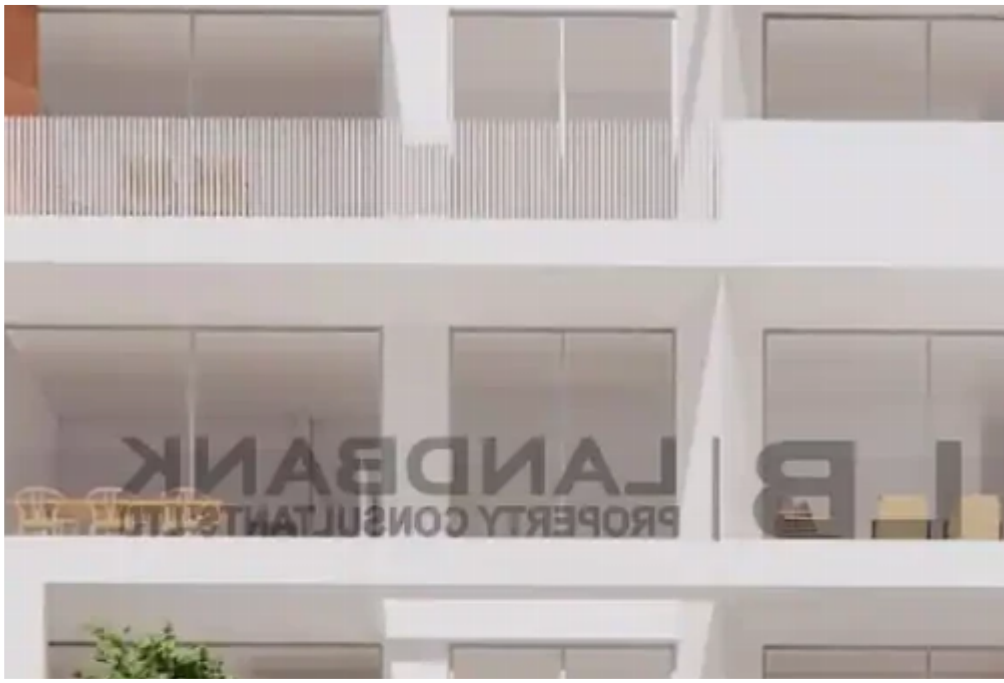
2-bedroom apartment f?r s?le

Limassol, Super-Home-Center-Timou-Prodromou-Mesa-Geitonia-4004 , Cyprus

Offered at: € 369,000

Estate ID: 63648

Ref: ba5449107





Bathrooms: **2**



Bedrooms: **2**



Parking spaces: **Covered cars**



Available from: **2024-09-24**



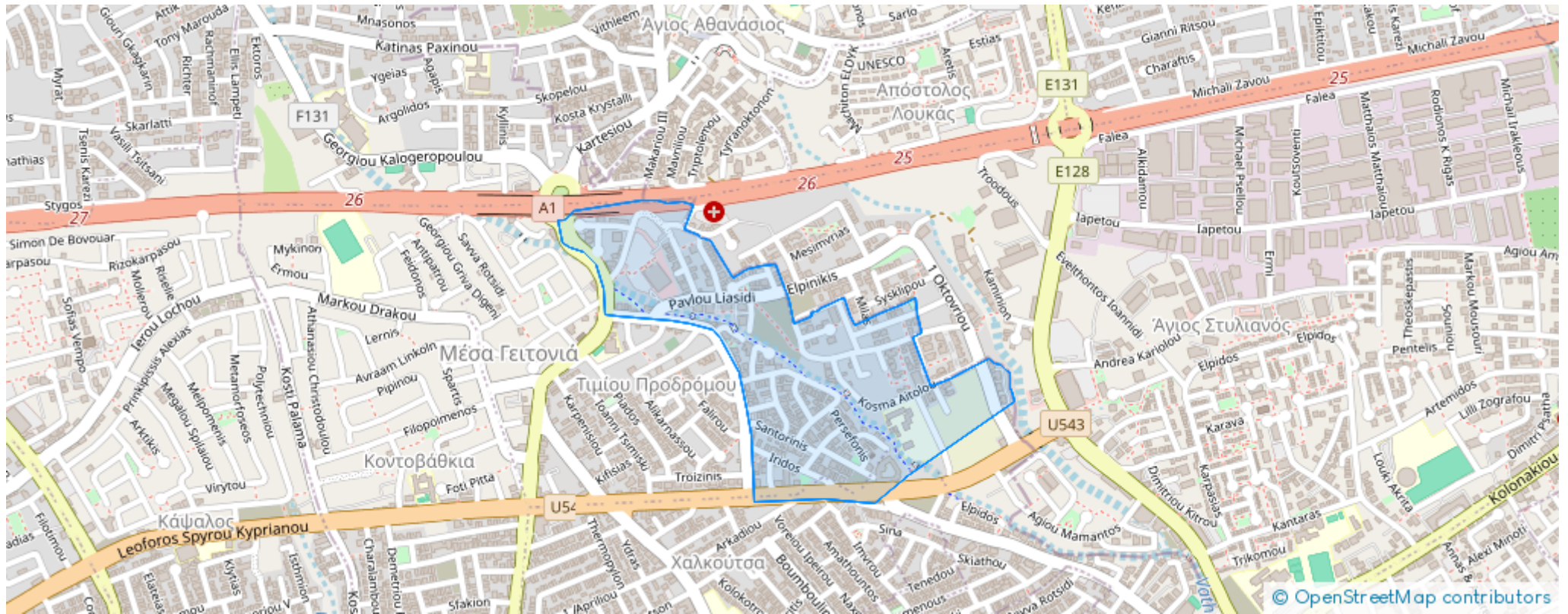
Offered at: **369,000**



Type: **Apartment**

""""""The property is a 2 Bedroom Apartment that gives a breath-taking view of the sea and the city, located on the 1st floor of a four-storey contemporary residential building in Germasogeia, Limassol. This is a stunning apartment that offers the best of two worlds: the tranquillity of nature and the convenience of urban living It measures about 103sqm of covered area and covered verandas plus 166sqm common area. The apartment consists of an open plan kitchen with dining/living room, 2 bedrooms, 2 bathrooms and a covered parking space. It also offers common swimming pool, kids playground and green area. Located on the hills, this residence is giving you a breath-taking view of the hor...

Estate on map:



L | B | **LAMDBANK**
PROPERTY CONSULTANTS LTD