



2-bedroom apartment f?r s?le

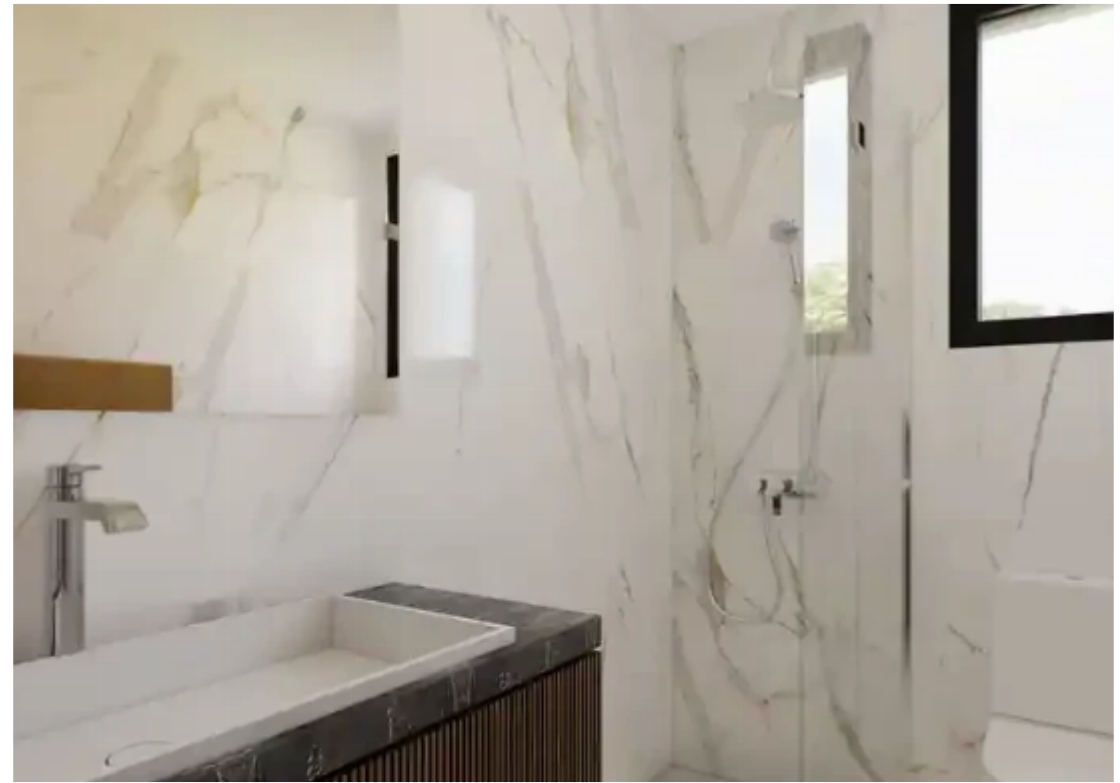
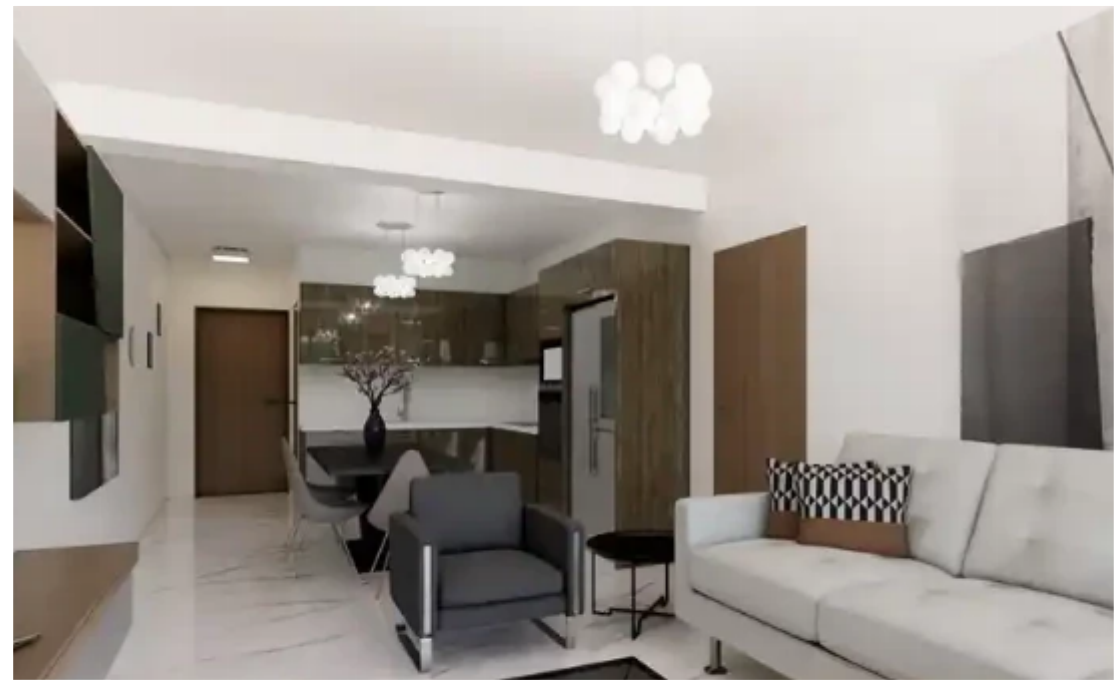
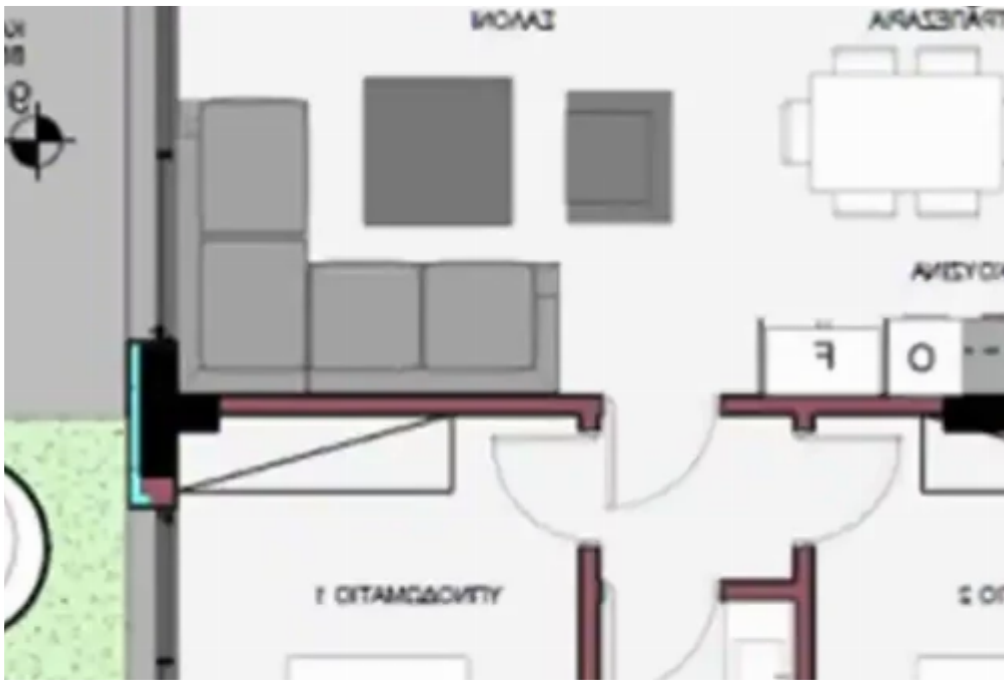
€245.000

Limassol, Lidl-Papantoniou-Store-Ypsonas-4187 , Cyprus

Offered at: €245,000

Estate ID: 65066

Ref: ba5460651





NET internal area: **110**



Bathrooms: **2**



Bedrooms: **2**



Parking spaces: **Covered cars**



Available from: **2024-10-02**



Offered at: **245,000**



Type: **Apartment**

""""""The Theofilou & Kalodotis Residences is a modern residential project situated in Limassol/Ypsonas. Here are key highlights of the development: • Stylish Apartments: The project offers a selection of 11 modern apartments spread across 3 floors, featuring a variety of configurations including 1-room, 2-room, and 3-room apartments to suit different needs and lifestyles. • Prime Location: It's only a 2-minute walk (300 meters) to Ilea Kannaourou Avenue, a popular area for shopping and dining, making it ideal for those seeking convenience and a vibrant lifestyle. • Proximity to Amenities: The residences are situated next to major supermarkets like Papantoniou and Lidl, ensuring...

Estate on map:

