

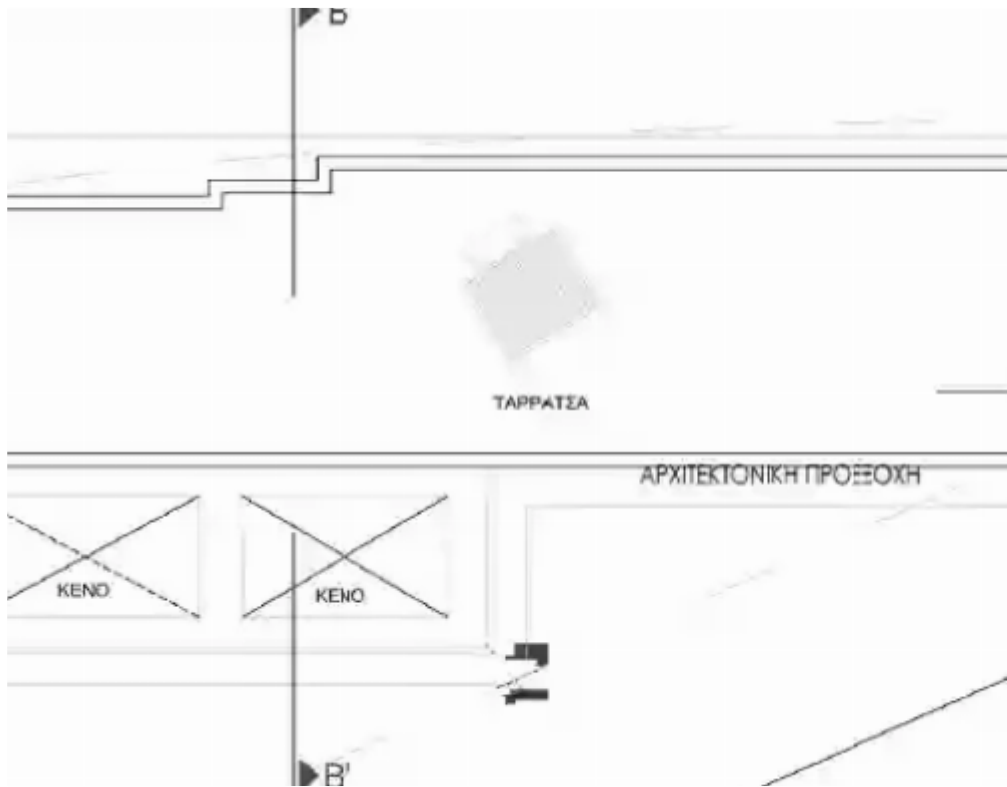
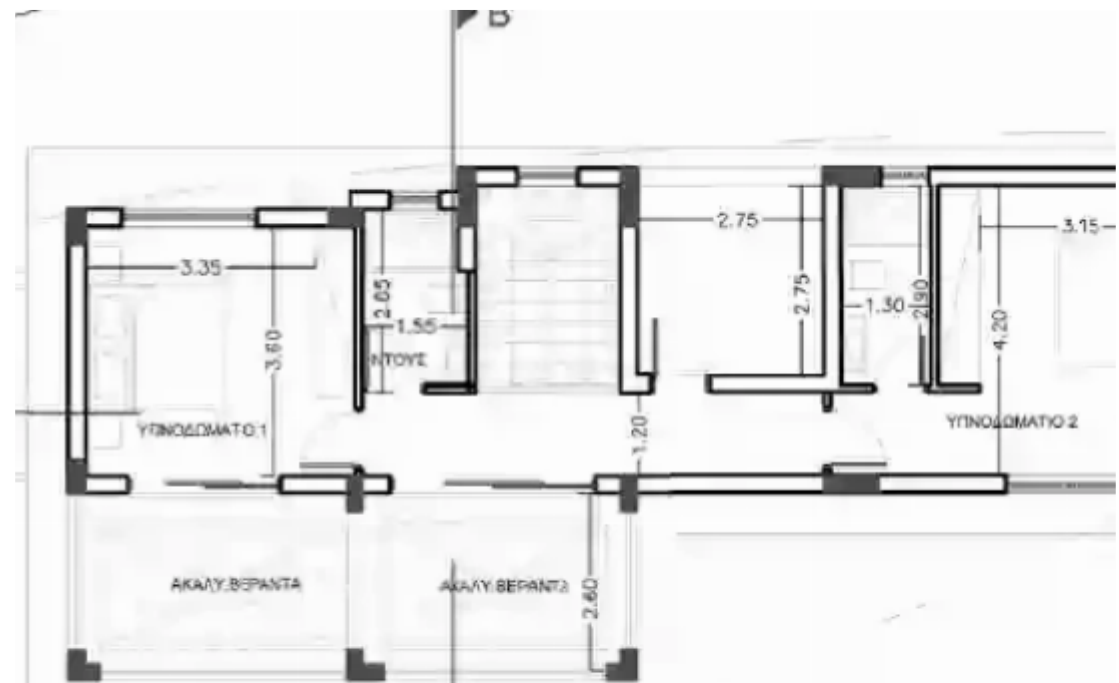
## 2 bedrooms, 157 sq.m.

Limassol, Pissouri-4607 , Cyprus

**Offered at:** € 495,000

**Estate ID:** 6516

**Ref:** J4383L1588





NET internal area: **157**



Bathrooms: **2**



Bedrooms: **2**



Parking spaces: **1 cars**



Available from: **2024-03-27**



Offered at: **495,000**



Type: **Villa**



Veranda: **37 m²**

Introducing Villa No. 3, featuring 2 + 2 bedrooms with provision for additional, set on a spacious plot measuring 507m<sup>2</sup>. This villa boasts 57m<sup>2</sup> of internal ground floor area and 62m<sup>2</sup> of internal upper floor area, along with a 17m<sup>2</sup> covered veranda and 20m<sup>2</sup> uncovered veranda. With a covered parking area of 21m<sup>2</sup> and a 4m x 8m swimming pool, the total covered area is 157m<sup>2</sup>. Included features encompass top-tier designer kitchens and wardrobes, granite worktops, marble stairs, pressurized water system, pipe-in-pipe plumbing system, solar water heating, underfloor heating, and provision for air conditioning. Additionally, enjoy landscaped gardens with automatic irrigation, double glazed w...

## Estate on map:

image not found or type unknown



