



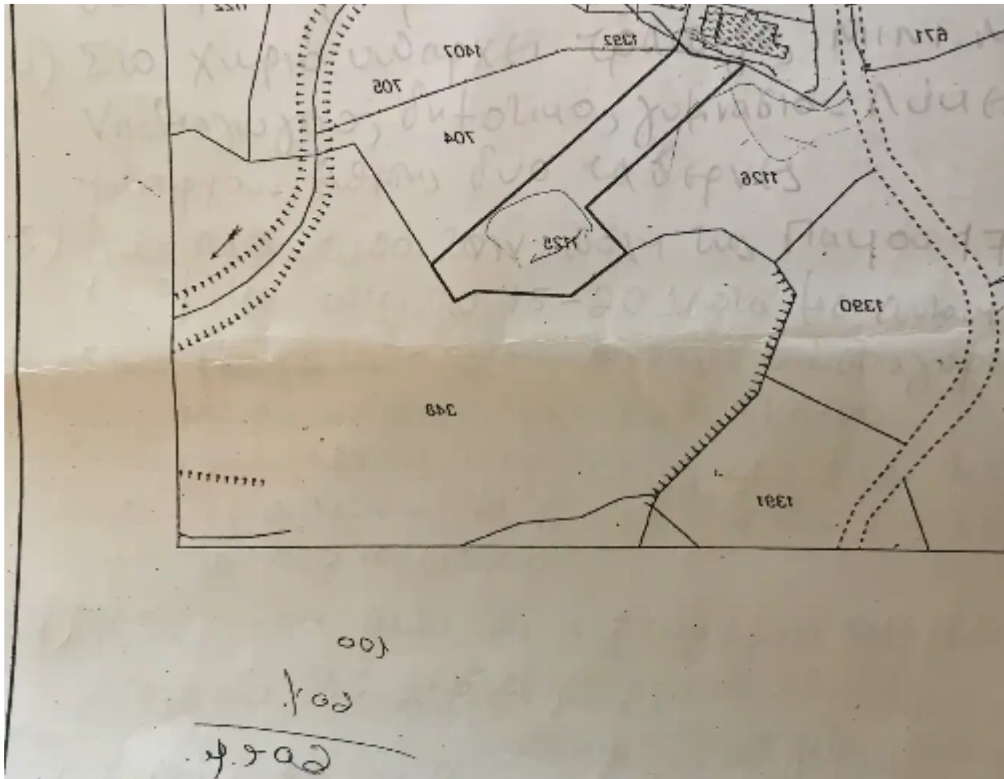
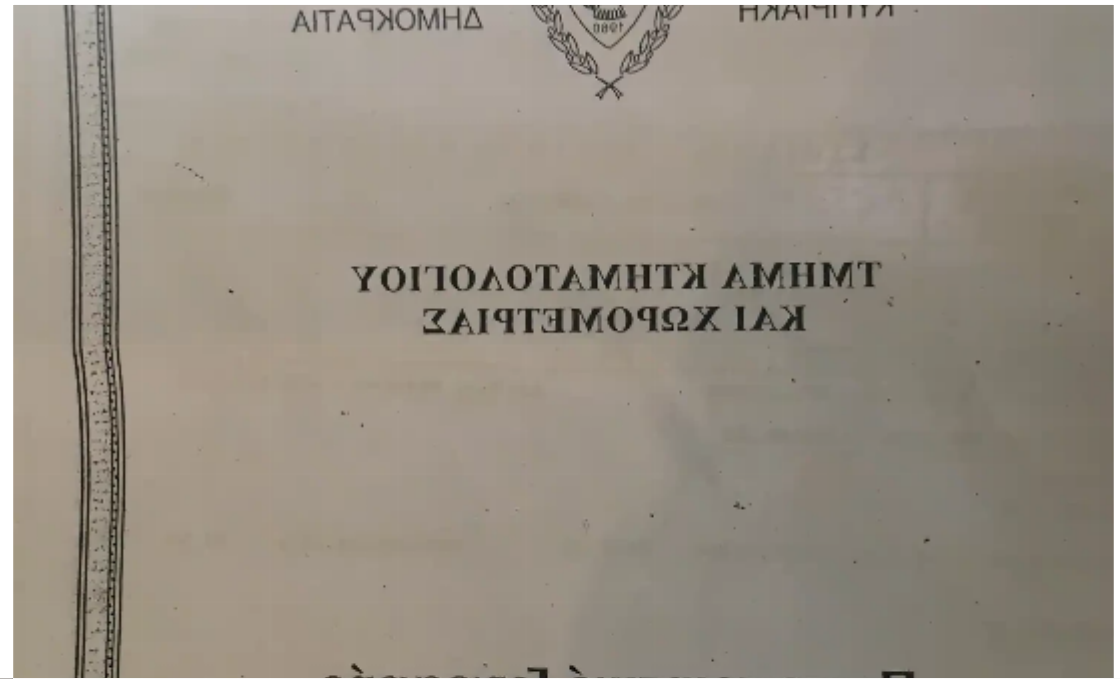
## Residential land 2249 m<sup>2</sup>

Paphos, Polemi-8549 , Cyprus

**Offered at:** € 148,000

**Estate ID:** 65562

**Ref:** ba5465151





Total plot's-land's area: **2249 m<sup>2</sup>**



Available from: **2024-10-05**



Offered at: **148,000**



Type: **Residential**

""""A 2,249 m2 residential plot is available at an excellent location in Polemi village, at a distance of approximately 17 km from the center of the historic and mythical city of Pafos (approximately 15 minutes by car), Cyprus. The entire plot (100%) falls into the residential zone (Vrisi tou Nicola), at a very quiet location, and is suitable for developing. The plot is located near eight large and beautiful villas and a house, surrounded by the nature and walkways in the green. The distance from the plot to the center of the village is only 700 m. In the village, there is ATM (the nearest bank, at Stroumbi village, is approximately 2 Km from the residential area), supermarket, two restauran...

## Estate on map:

image not found or type unknown



