



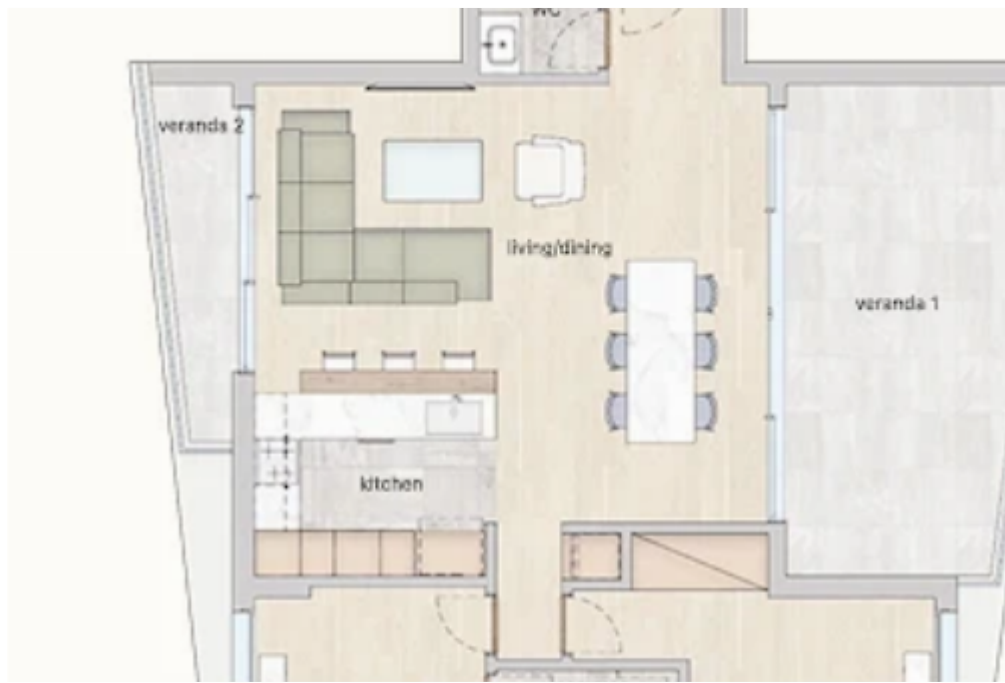
Spacious 2-Bedroom Apartment with Large Veranda in Central Limassol

Limassol, Alasia-Hotel-Market-Katholiki-3020 , Cyprus

Offered at: € 800,000

Estate ID: 6851

Ref: MLS-63017





Bathrooms: **2**



Bedrooms: **2**



Available from: **2025-08-18**



Offered at: **800,000**



Type: **Apartment**



Veranda: **26 m²**

If you're looking to buy apartment in Limassol that combines premium space, modern design, and a central location, this elegant 2-bedroom residence in the Katholiki area is an excellent opportunity. ? 2 Bedrooms ? 2 Bathrooms ? 99 sqm internal space + 26 sqm covered veranda ? 5th Floor | Brand-new development | Energy Class A ? Alasia Hotel district – Katholiki, Limassol (Postal code 3020) This stylish city apartment stands out with its spacious interior and expansive covered veranda, offering plenty of natural light and room for relaxation or entertaining. Located in a newly built energy-efficient complex, the property delivers top construction quality and contemporary finish...

Estate on map:



