



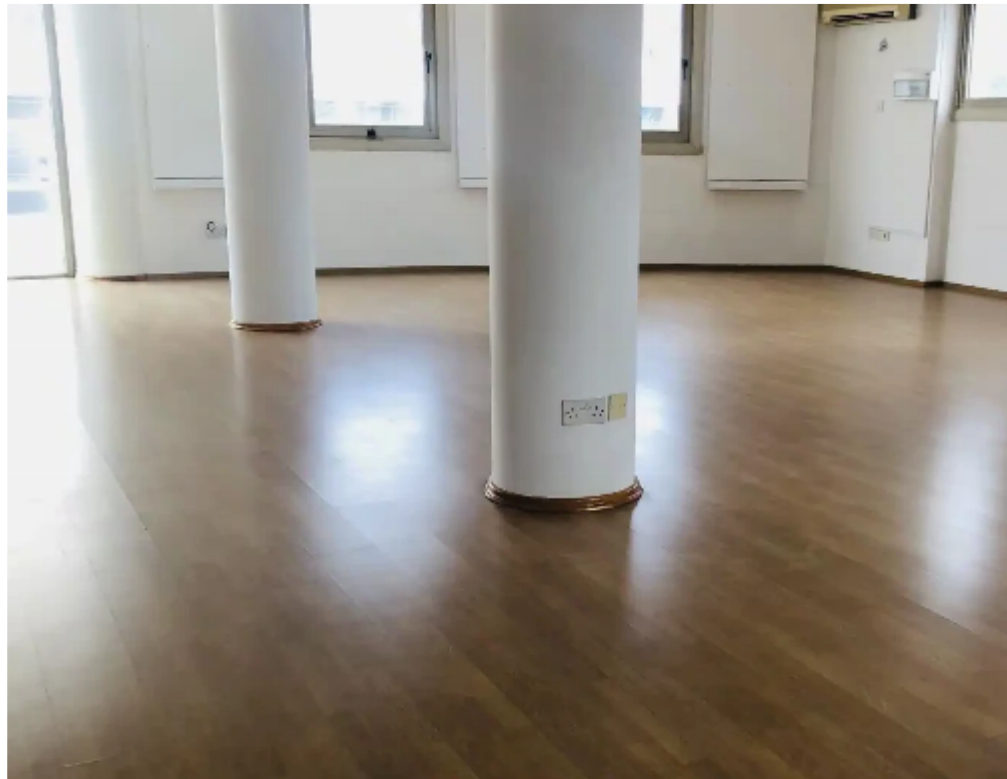
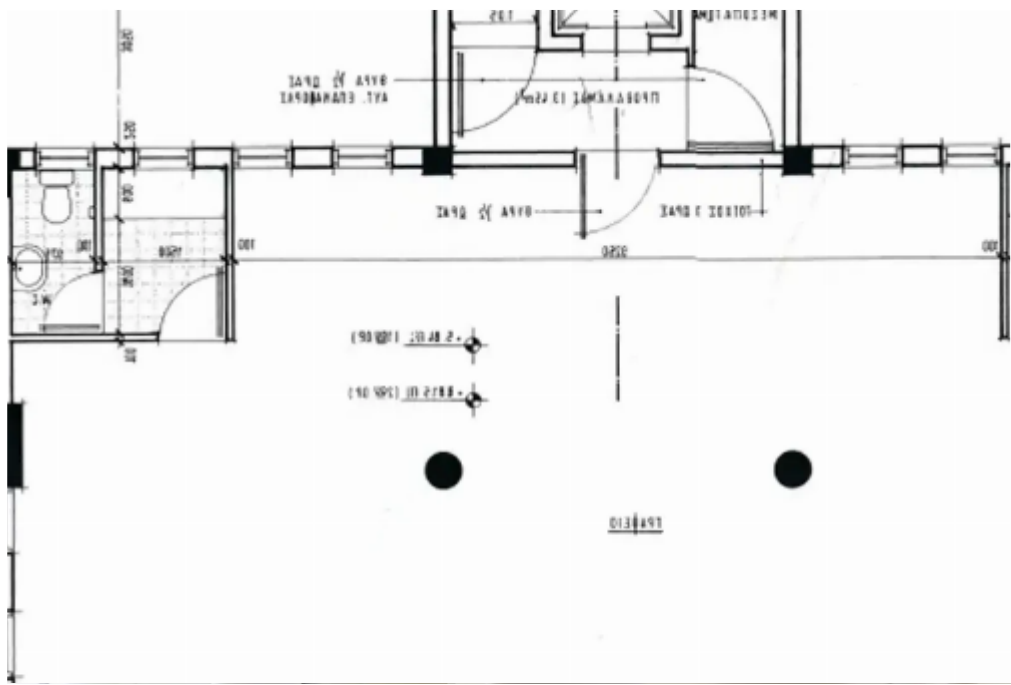
1671m² commercial building

Limassol, Arch-Makariou-Iii-Ave-Agios-Nektarios-3095 , Cyprus

Offered at: € 3,500,000

Estate ID: 69263

Ref: ba5356515





NET internal area: **1671**



Available from: **2024-10-25**



Offered at: **3,500,000**



Type: **Space**

.....Mixed-use building in the heart of Limassol's commercial centre, featuring: • Mixed-use building • Main road frontage • Underground parking • Central location • Yield: 10.7% • Title deed available Dimensions: • Ground floor: 203m² • Mezz level: 173.25m² • 1st floor: 165.2m² • 2nd floor: 165.2m² • 3rd floor: 129m² • 4th floor: 146m² • Total covered area (incl. lift & stairs): 981.65m² • Basement parking: 546.7m² • Ground floor parking: 40m² • Total parking: 586.7m² • Total covered: 1671.85m² • Title deed available This mixed-use opportunity is located in the heart of Limassol's commercial centre. The ground floor boasts main r...

Estate on map:

