

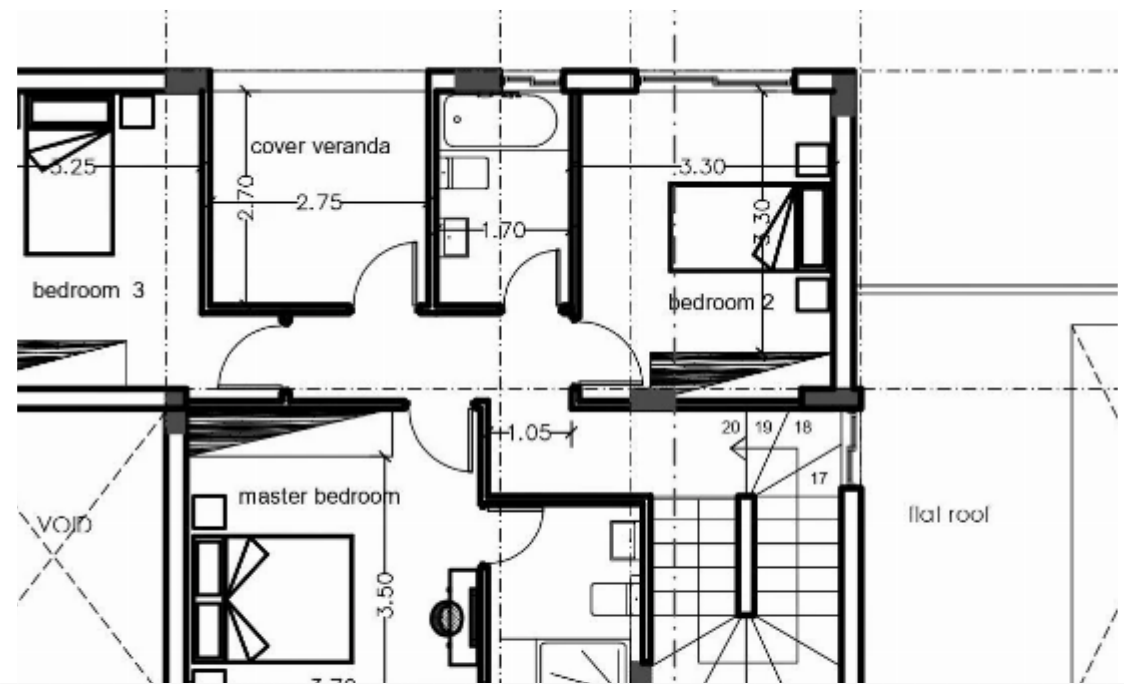
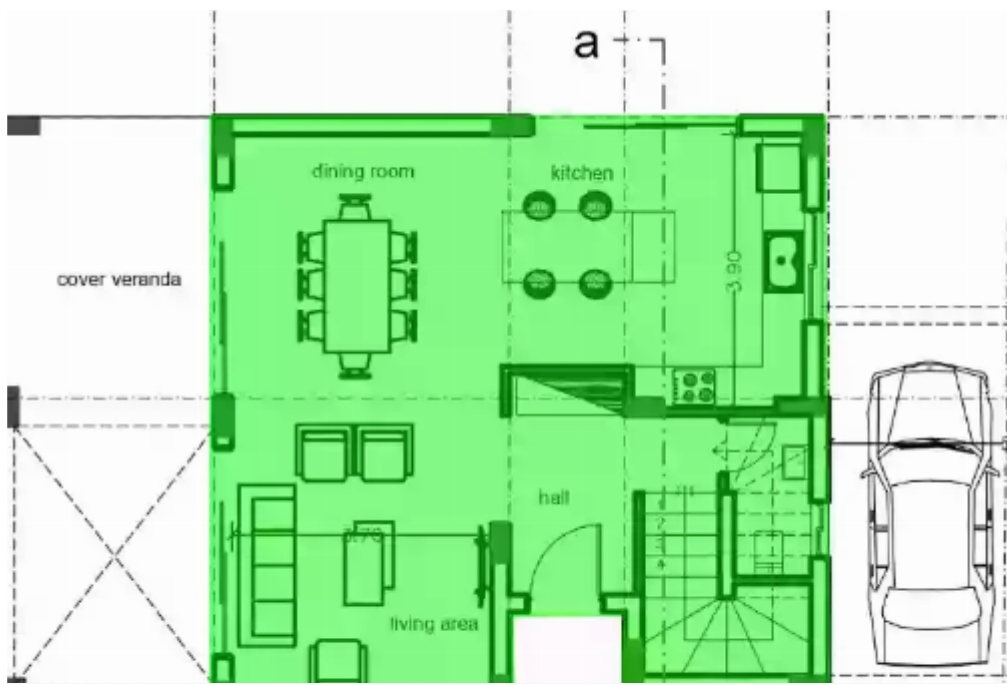
3 bedrooms, 120

Limassol, Souni-4717 , Cyprus

Offered at: € 440,000

Estate ID: 6950

Ref: J3930L1502





NET internal area: **120**



Bathrooms: **2**



Bedrooms: **3**



Parking spaces: **2 cars**



Available from: **2024-03-27**



Offered at: **440,000**



Type: **Villa**



Veranda: **15 m²**

Elegant residence set on a generous 363 m² plot, offering spacious and refined living. With 3+ bedrooms, 2 bathrooms, and an additional WC, this home boasts 120m² of covered indoor area, complemented by a delightful 15m² covered veranda. Versatility meets convenience with a 30m² parking/extra room area. Experience comfort with underfloor heating and revel in the bespoke kitchens and wardrobes featuring granite worktops. Enjoy the beautifully landscaped garden areas and the convenience of a pressurized water system. Benefit from modern amenities like the pipe-in-pipe plumbing system and solar panel water heating while relishing the thermal insulation throughout. Appreciate the elega...

Estate on map:

