



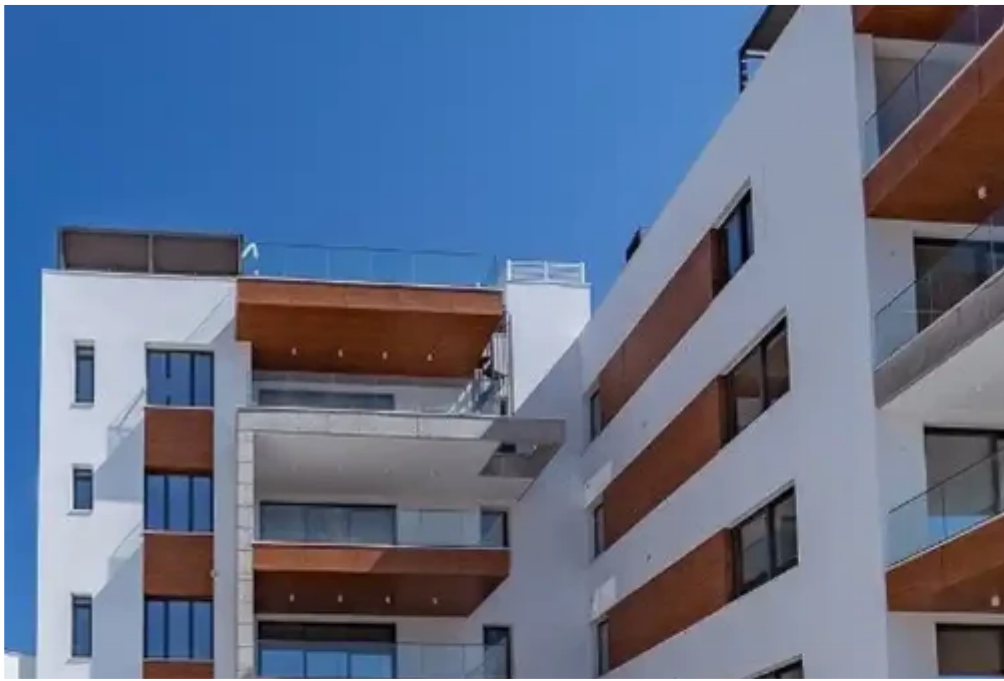
3-bedroom apartment f?r s?le

Limassol, Spyrou-Kyprianou-Ave-Kapsalos-3083 , Cyprus

Offered at: € 900,000

Estate ID: 69578

Ref: ba4733483





Bathrooms: **2**



Bedrooms: **3**



Parking spaces: **No cars**



Available from: **2024-10-25**



Offered at: **900,000**



Type: **Apartment**

.....In this complex there are only 19 apartments, 1 duplex and 5 penthouses with one, two, three and four bedrooms. The cleverly designed master plan provides for convenient access to the common pool and recreational area, landscaped gardens and covered parking spaces. The penthouses enjoy spacious private rooftops. Sandy beaches and popular tourist attractions 5 minutes away from the project guarantee that your property will be a successful investment offering generous capital growth and suitable for getting a solid rental yield. The smart “compound” concept, convenient positioning, and trendy architectural concept make it unmatched on the Limassol property market. Cover...

Estate on map:

image not found or type unknown



