



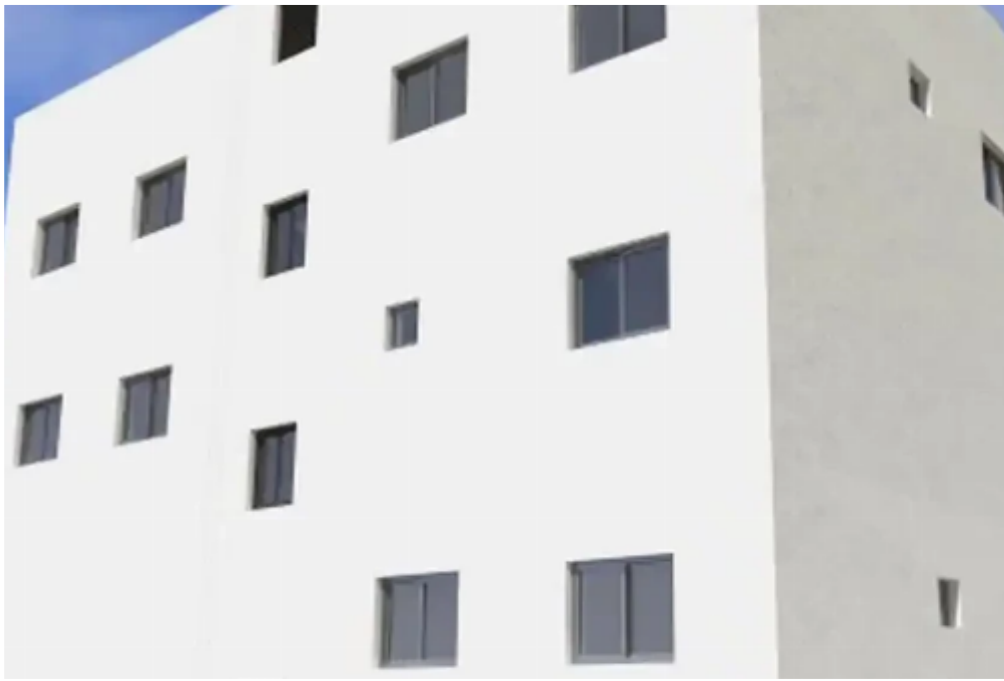
4-bedroom apartment f?r s?le

Limassol, Ikea-Makarios-lii-Kato-Polemida-4154 , Cyprus

Offered at: € 550,000

Estate ID: 69748

Ref: ba4734227





NET internal area: **152**



Bathrooms: **2**



Bedrooms: **4**



Parking spaces: **Covered cars**



Available from: **2024-10-25**



Offered at: **550,000**



Type: **Apartment**

"""" New project in a very popular residential area of Limassol next to IKEA/JUMBO mall. It is a residential building characterized by a minimal design and stands out due to its contemporary features. Ground floor: - parking spaces and store rooms 1st floor: Whole first floor comprising of 1 apartment/office The building will be serviced by a communal staircase and a high quality electrically driven elevator. Double Glazed Gated complex Parquet in Bedrooms Energy efficiency Class A Building with exceptional thermal insulation for walls and roofs...""""...

Estate on map:

image not found or type unknown



