



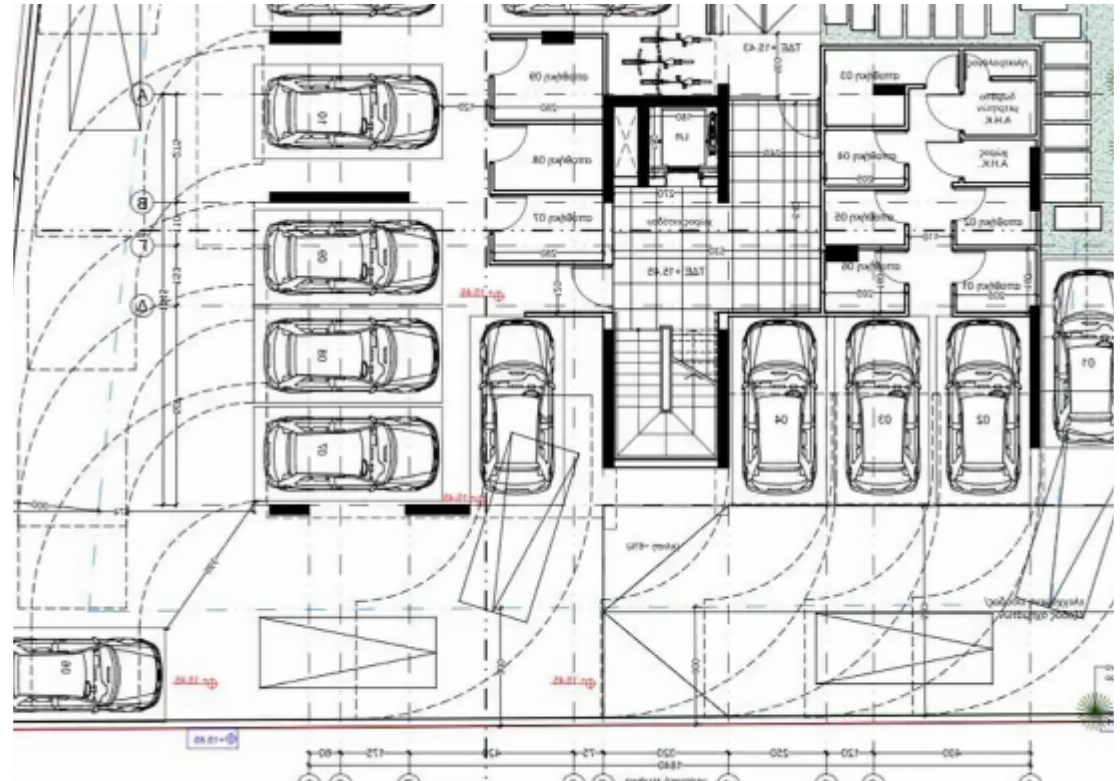
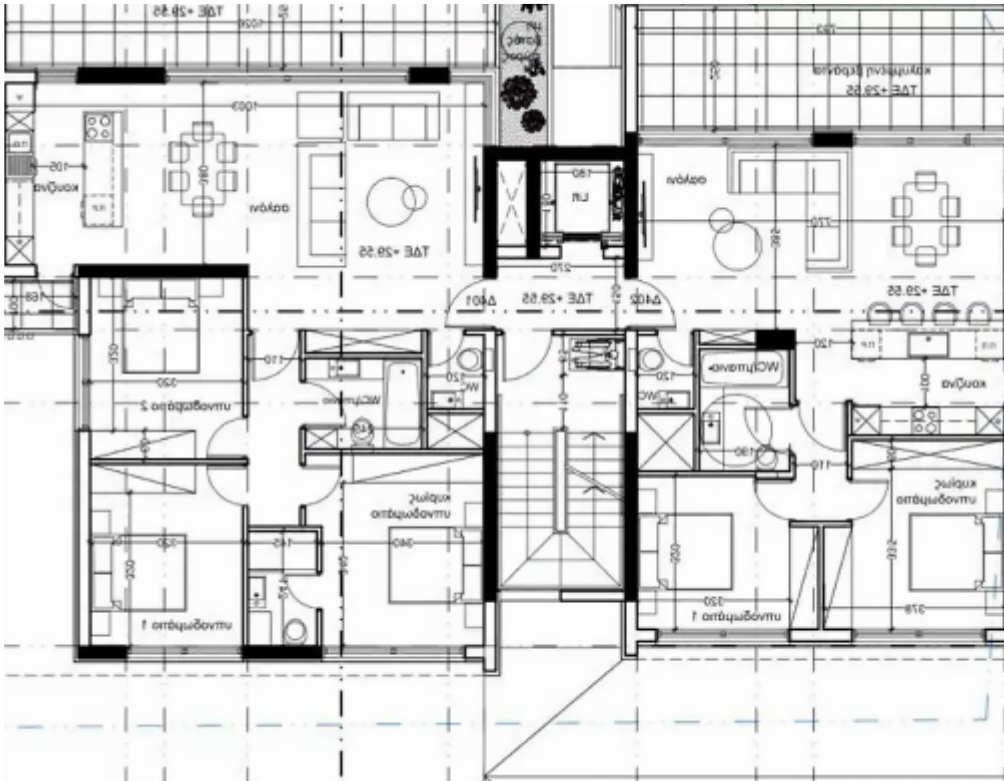
2-bedroom apartment f?r s?le

Limassol, Primary-School-St-Mary-School-Agia-Zoni-3031 , Cyprus

Offered at: € 425,000

Estate ID: 69825

Ref: ba5089053





Bathrooms: **1**



Bedrooms: **2**



Parking spaces: **No cars**



Available from: **2024-10-25**



Offered at: **425,000**



Type: **Apartment**

""""The project of exquisite design and aesthetics is located in a walking distance to Gladstone's street in Agia Zoni area in the heart of Limassol. It combines the setup of a quiet neighborhood with direct access to key amenities in one of Limassol's most popular districts. The building is positioned in immediate proximity to some of Limassol's main private clinics, the Limassol Municipal Garden, the District Courts and the District Post Office, supermarkets, pharmacies and within walking distance from the high street shopping area of the city 'Anexartisias Street'. Delivery Q1 2025""""...

Estate on map:

image not found or type unknown



