



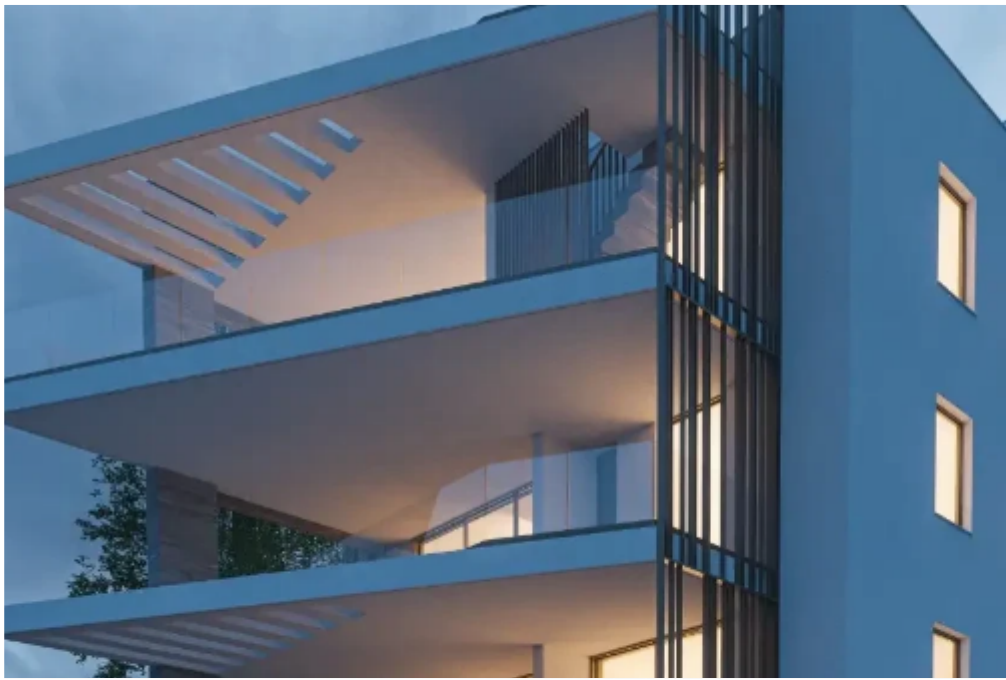
2-bedroom apartment f?r s?le

Larnaka, Lisou-Santama-St-Tsakilero-Sotiros-6052 , Cyprus

Offered at: € 210,000

Estate ID: 70251

Ref: ba5490470





NET internal area: **80**



Bathrooms: **2**



Bedrooms: **2**



Parking spaces: **Covered cars**



Available from: **2024-10-25**



Offered at: **210,000**



Type: **Apartment**

""Located in the Aradippou area of Larnaca, close to Livadia, this new project offers the perfect blend of comfort and convenience. With a green park next to the plot and the beach only 2 km away, it provides a serene living environment. Key Features: Spacious Apartments: The 3-floor building consists of 1-, 2-, and 3-bedroom apartments, as well as penthouse apartments with private roof terraces. Prime Location: Strategically located near local amenities, schools, and shopping centers, making it ideal for families. Green Living: Enjoy the proximity to a beautiful park while living just a short distance from the beach. With attractive prices, this project is perfect for those seeking a famil...

Estate on map:



