



2-bedroom apartment f?r s?le

Paphos, Lidl-Tombs-Of-The-Kings-Moutallos-8015 , Cyprus

Offered at: € 385,000

Estate ID: 70254

Ref: ba5490485





Bathrooms: **2**



Bedrooms: **2**



Parking spaces: **Covered cars**



Available from: **2024-10-25**



Offered at: **385,000**



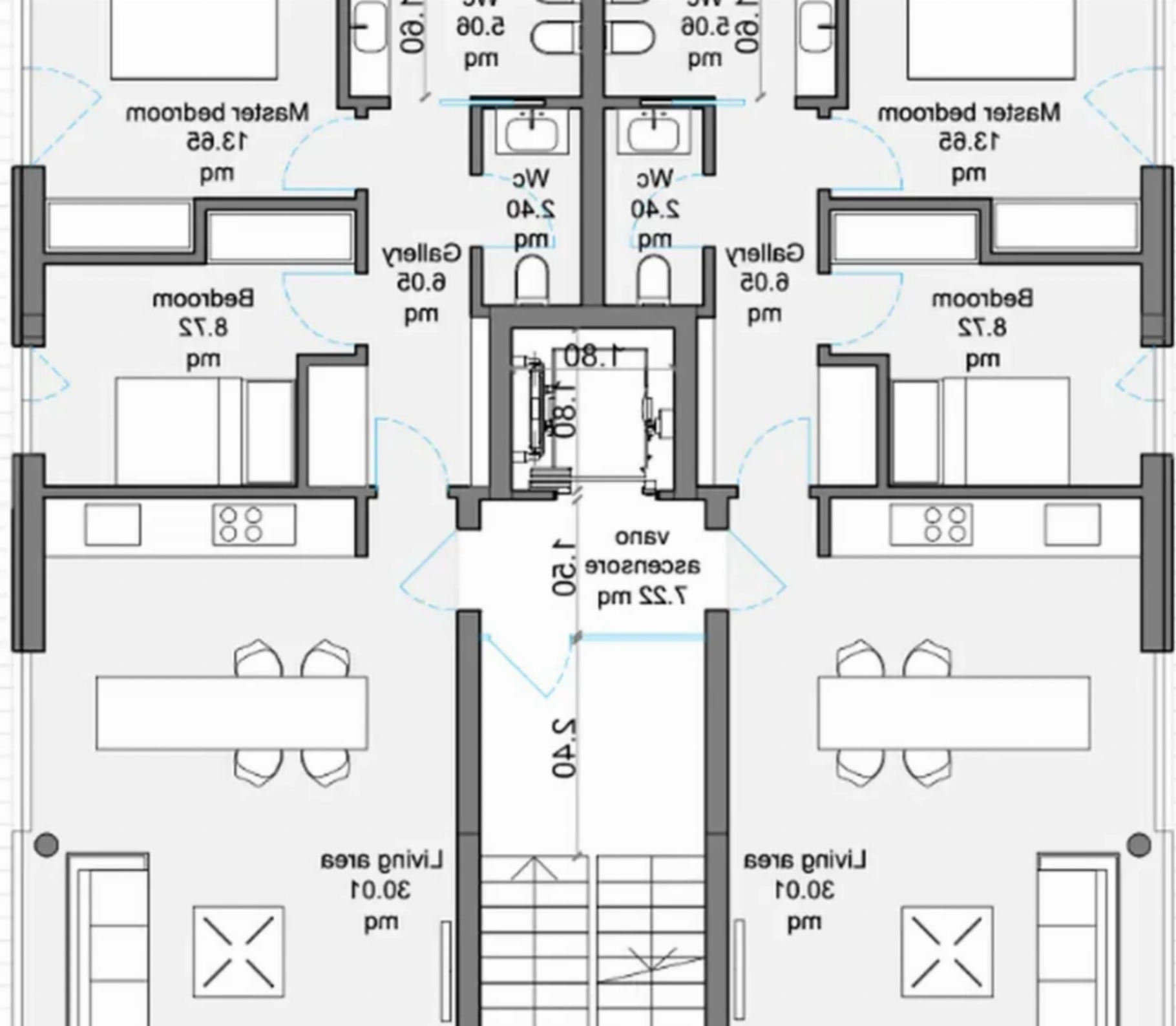
Type: **Apartment**

Apartments for sale in a residential complex in the heart of Paphos, offering the perfect combination of modern design, convenience and luxurious urban life. This complex is designed for discerning buyers looking for an elegant home near the beach and the old town. The project includes six exclusive double apartments, each of which is created with attention to detail to ensure the comfort and style of modern life. The apartments are located in Kato Paphos, just a 2-minute drive from the beach and 3 minutes from Kings Avenue Mall, allowing residents to enjoy the tranquility of the coast and easy access to urban amenities. A prestigious private school is a 2-minute drive away, as well ...

Estate on map:

image not found or type unknown





Master bedroom
13.62
m²

Bedroom
8.72
m²

Gallery
6.02
m²

Wc
2.40
m²

ascensore vano
1.20
1.80
m²

Living area
30.01
m²

Master bedroom
13.62
m²

Bedroom
8.72
m²

Gallery
6.02
m²

Wc
2.40
m²

Living area
30.01
m²

4.55
5.46
9.41